



INTRODUCING
**PROSTEP™
STEAMER**

**DURABLE HIGH-
PERFORMANCE DESIGN**

PERFECT FOR PROFESSIONAL
USERS AND THE RENTAL MARKET

FLASH STEAM TECHNOLOGY

Cuts heat-up time to 4 minutes

REMOVABLE WATER TANK

for easy refills and faster cleaning

ACCESSIBLE HEATING ELEMENT

Improves serviceability and extends unit life

INTEGRATED STEP

Featuring anti-slip surface for that extra reach

DESCALING INDICATION LIGHT

Lets the user know when maintenance is needed

ALL-IN-ONE-STORAGE

Keeps components in one place



*SCAN FOR PRODUCT
DETAILS, VIDEOS
AND RESOURCES*



For more information, contact your
Local Sales Representative.

Titan Tool

1770 Fernbrook Lane
Minneapolis, MN 55447

1-800-526-5362

PROSTEP STEAMER

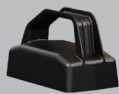
SCAN TO VIEW THE
PROSTEP STEAMER
QUICK START GUIDE



INCLUDES 5 ACCESSORIES



Large Steam Plate
2457162



Small Steam Plate
2457163



Steam Hose Assembly
2457164



Water Tank
2457166



Heating Element
2457165

SPECIFICATIONS

Max. Flow Rate	0.24 gpm / 0.0 lpm
Max. Pressure	1595 psi / 11 MPa
Tank Capacity	1.35 gal / 9.1 lpm
Step Max Weight	330 lbs / 150 kg
Hose Length	16 ft / 5 m
Small Steam Plate Dimensions	5.90 x 2.95 in 15.00 x 7.5 cm
Large Steam Plate Dimensions	12.25 x 9.53 in 31.10 x 24.20 cm
Part No.	2444364



titantool.com

Titan Tool

1770 Fernbrook Lane
Minneapolis, MN 55447

1-800-526-5362