

Owners Manual

For All Electric Models

MANUFACTURED BY PORT-A-COOL, LLC

For
Port-A-Cool®,
Port-A-Cool JetStream™
and Cyclone™
product lines

Port-A-Cool® Products and Accessories
and
Küül® Pads Cooling Media
are manufactured by

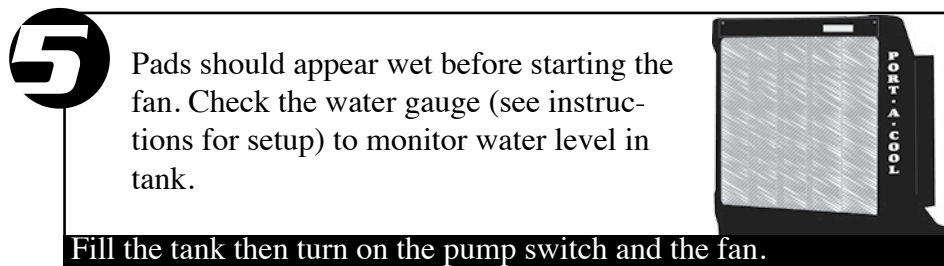
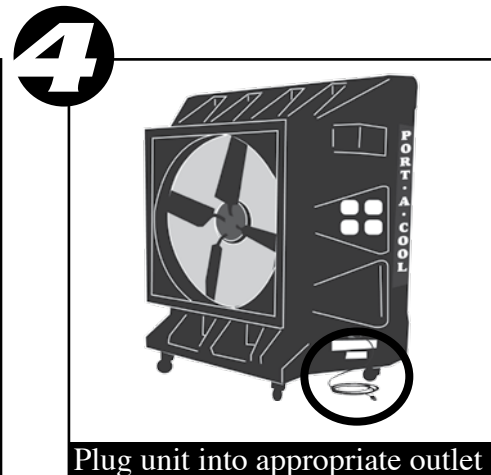
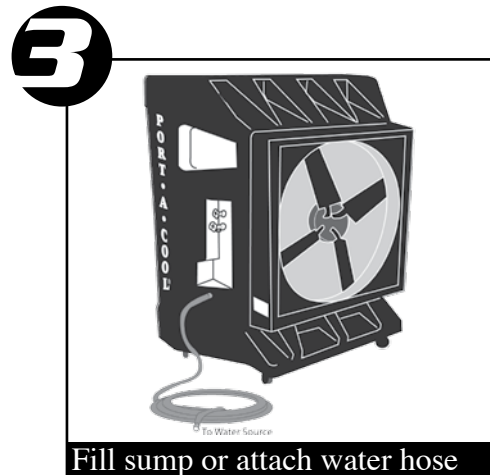
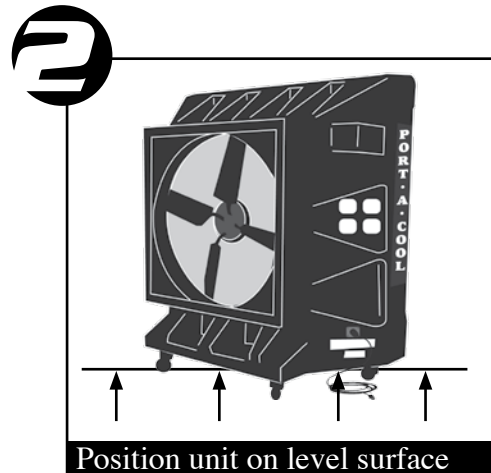
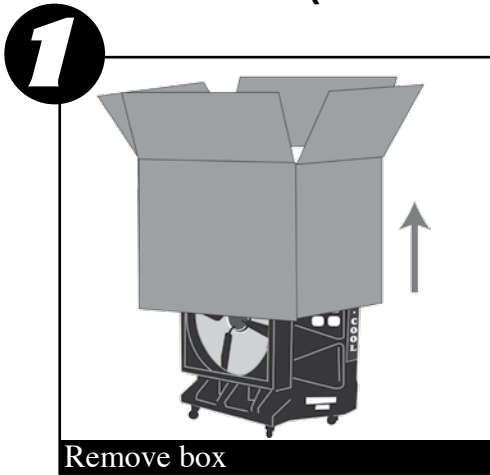


MANUFACTURED BY PORT-A-COOL, LLC

Port-A-Cool, LLC
P.O. Box 2167 • 709 Southview Circle • Center, TX 75935
Phone 936-598-5651 • 800-695-2942
www.port-a-cool.com



READ AND SAVE
THESE INSTRUCTIONS

**QUICK SET UP GUIDE****Q. HOW DO I OIL THE FAN MOTOR?**

A: The Emerson Motor Installation and Maintenance Information manual states, "Sleeve bearing motors require periodic re-oiling. Re-oil continuous duty units once a year, intermittent duty units every two years, and occasional duty units every five years with 30 to 35 drops of SAE no. 20 non-detergent or electric motor oil."

Q. WHERE CAN I BUY REPLACEMENT PARTS?

A: Unit replacement parts may be purchased from any Port-A-Cool® product distributor or directly from Port-A-Cool® Parts/Technical Support department. You may also visit www.port-a-coolparts.com to order online.

Q. HOW OFTEN DO PADS HAVE TO BE REPLACED?

A: Depending on the quality of maintenance and frequency of use, pads typically last up to five years. However, should you have any questions about the life of the pads for your unit, please call our tech support department for more detailed information about replacing your pads.

Q. WHAT IS THE AMOUNT OF MOISTURE PRODUCED BY A UNIT?

A: Approximately 2% to 5% increase in humidity is produced depending on the temperature and humidity of the environment. This amount of increase in humidity is not noticeable in a ventilated area where the air produced by the unit is exhausted.

Q. HOW LONG WILL THE WATER SUPPLY LAST IN THE SUMP TANK?

A: With no direct water source available, the unit will evaporate the water in a filled sump tank within two hours of operation. The evaporation rate will vary depending on temperature and humidity. A water source for refilling the sump tank is recommended by the manufacturer. Most units have an internal float valve for regulating water flow into the sump.

Q. SHOULD I USE ICE IN THE SUMP TANK FOR BETTER COOLING?

A: Some of the vapor from the ice water may be picked up and distributed by the fan, but this does not increase evaporation and therefore will not produce significant cooling.

Q. WHERE ARE THE MODEL AND SERIAL NUMBERS FOUND ON THE UNIT?

A: On the outside of the housing of every unit is a metal plate with a white label with printed barcodes and other information. Unit model numbers begin with the letters "PAC." Serial numbers are all-digit numbers. Please always provide the unit's serial number and model number when contacting Parts/Technical Support.

Q. WHAT IF MY QUESTIONS AREN'T ANSWERED HERE?

A: Our Tech Support staff is available 8 a.m. to 5 p.m. Central Time, Monday through Friday at 1-888-COOL-AID or you can e-mail them at support@port-a-cool.com.



PORT-A-COOL®

Evaporative Cooling Unit

OWNERS MANUAL

FREQUENTLY ASKED QUESTIONS

Q. IS THERE ANY ASSEMBLY REQUIRED?

A: No. Port-A-Cool® units are ready to use right out of the box.

Q. HOW DO I PREPARE MY PORT-A-COOL® UNIT FOR STORAGE?

A: Simply drain the unit, dry out the pads and place the unit, preferably covered, in a dry place for the winter season. For more details, please call our Tech Support Hotline at 1-888-COOL-AID.

Q. I JUST HOOKED UP MY PORT-A-COOL® UNIT FOR THE FIRST TIME AND THERE'S AN UNPLEASANT ODOR! WHAT'S WRONG?

A: A new unit will go through a break-in period during which it may emit some odor. The pads, located in the back of your Port-A-Cool® unit, have never been wet. The resin in the pads will emit an odor the first time you wet them that lasts approximately one to three weeks. Keep the unit in an open area until the odor goes away or put a capful of laundry softener directly in the tank in the bottom of your unit. After approximately two weeks of operation, the odor should disappear. If the unit is not a new unit, algae or bacteria growth in the unit from improper maintenance will cause odors. Please refer to your Owner's Manual for proper cleaning and maintenance.

Q. MY PORT-A-COOL® UNIT ISN'T PUTTING OUT ANY COOL AIR.

A: First, check the back of your unit to see if the pads are damp. Adjust the water flow. For the evaporation process to occur, the pads must be damp before you turn on the fan. Second, make sure there is water in the tank. It should be allowed to fill before you turn the pump on. Thirdly, make sure the water source and electricity source are connected and working. Fourth, if none of these options fix the problem, call our Tech Support Hotline at 1-888-COOL-AID for additional assistance.

Q. WHAT IS THE BEST ENVIRONMENT FOR THE PORT-A-COOL® UNIT TO PRODUCE THE MOST COOL AIR?

A: For optimum performance, the temperature should be 85 degrees F or higher and the relative humidity should be below 75%. However, Port-A-Cool® units will reduce the temperature in almost any environment, making it more pleasant.

Q. WHAT IS THE DIFFERENCE BETWEEN EVAPORATIVE COOLING AND MISTING SYSTEMS?

A: Misting units spray a shower of water into the air that will collect on a person, getting the person or floor wet. The Port-A-Cool® unit uses the evaporative process to produce cooler air.

FOR ELECTRIC MODELS
PAC2K482S, PAC2K361S, PAC2K363S, PAC2K36HPVS, PAC2K24HPVS, PAC2K163S, PAC2K163SFC, PAC2K163SHD, PAC163SVT, PACJS1600, PACJS2400, PAC2KCYC01, PAC2KCYC01A

INCLUDES EXPORT MODELS
PACCYC22050, PACCYC22060, PACCYC22050A, PACCYC22060A, PACJS160022050, PACJS160022060, PACJS240022050, PACJS240022060, PAC161SVT22050, PAC161SVT22060, PAC16HPFC-22050, PAC16HPFC-22060, PAC2K161FC22050, PAC2K161FC22060, PAC2K161S-22050, PAC2K161S-22060, PAC2K16HP-22050, PAC2K16HP-22060, PAC2K24HP220-50, PAC2K24HP220-60, PAC2K362S220-50, PAC2K36HP220-50, PAC2K36HP220-60, PAC2K481S220-50, PAC2K481S220-60

READ AND SAVE THESE INSTRUCTIONS

CONTENTS:

- I. SAFE OPERATION..... page 1
- II. SETUP
 - A. Unpacking the PORT-A-COOL® unit. page 1
 - B. Connecting the water and electricity or air.
- III. OPERATING PROCEDURES.....page 2-3
 - A. Specifications.
 - B. Placement of the PORT-A-COOL® unit.
 - C. Filling with water.
 - D. Starting the pump and adjusting the water flow.
 - E. Starting the fan.
- IV. MAINTENANCE & STORAGE page 4
 - A. Daily Maintenance
 - B. Weekly Maintenance
 - C. Storage
 - D. Technical Support
- V. REPLACEMENT PARTS page 5
 - A. RMA Procedures
 - B. Port-A-Cool® Unit Limited Warranty
 - C. Fan and Pump Replacement.....page 6-8
 - D. Exploded Views and Parts lists by model.....page 9-22
- VI. WIRING DIAGRAMS.....page 23-26
- VII. UNIT OPERATION WARNINGS & OVERVIEWS.....page 27-29
- VI. TROUBLESHOOTING.....page 30-34
- FREQUENTLY ASKED QUESTIONSpage 35-36

I. SAFE OPERATION

To reduce the risk of electric shock, fire or injury:

- Do not operate any fan with a damaged cord or plug. Discard fan or return to an authorized service facility for examination and/or repair.
- Do not run cord under carpeting. Do not cover cord with throw rugs, runners, or similar coverings. Arrange cord away from traffic area where it will not be tripped over.
- Read instructions and labels carefully.
- Always unplug the electric cord to your cooler before you work on the cooler.
- Plug into three-prong grounded GFCI protected electrical receptacle only.
- Do not operate if there is any damage to the plug or cord.
- Do not step on or roll over power cord with heavy or sharp objects.
- Do not operate unit unless all panels are securely in place.
- Remove the plug from the electrical receptacle by pulling on the plug and not the cord.
- Test the GFCI receptacle or breaker monthly to ensure it is functioning properly.
- Do not operate near open containers of flammable liquids or gases.
- Never wash your cooler cabinet with a garden hose; water may harm the motor and electrical system.
- If the unit is damaged or it malfunctions, do not continue to operate it. Refer to the warranty, troubleshooting or FAQ section, call Port-A-Cool, LLC, Technical Support at (888) COOL-AIR (1-888-266-5243), or email support@port-a-cool.com.

II. SETUP

A. Unpacking the PORT-A-COOL® unit.

PORT-A-COOL® units are shipped completely assembled and sitting on a plastic pallet with a large cover box strapped over the PORT-A-COOL® unit. Simply cut the straps and remove the box by lifting it over the PORT-A-COOL® unit. Remove the protective plastic dust cover to expose the PORT-A-COOL® unit. The 16" model PORT-A-COOL® units are shipped in an enclosed corrugated box and need only be removed from the box.

B. Connecting the water and electricity.

Water Connection (PORT-A-COOL® unit must be in upright and level position)

After the PORT-A-COOL® unit has been thoroughly tested at the factory, a special 2-sided brass hose adapter is attached to the water inlet on the side of the PORT-A-COOL® unit, which is below the spray bar adjustment and drain valves. A standard garden hose is attached to this brass hose adapter and cinched down to preclude leaks. Visually verify that the hose washer is in position and in good condition.

In the 16" SFC unit, the water tank in the lower portion is designed to be filled at a remote location and then used without a permanently connected hose. Simply fill the lower tank using the sight glass as a gauge.

UNIT IS EQUIPPED WITH 50 PSI WATER REGULATOR. DO NOT BYPASS.
WATER SUPPLY INLET PRESSURE SHOULD BE LIMITED TO 50 PSI MAXIMUM

Once the hose connection is made, water may be turned on to the PORT-A-COOL® unit. Water should now be entering through the float valve to fill the sump tank.

To verify that your connections are secure, visually inspect connections for leaks. Remove the cooling pads by following the instructions in Section VI of this owners manual. Once the sump tank is filled, the water flow should cease and the inlet connections may now be visually checked for leaks, paying particular attention to the hose connection into the float valve and the connections into the brass inlet fitting. All of these inspections have been performed at the factory but shipping may have caused connections to loosen. The cooling pads may now be replaced by reversing the removal operation.

BRONZE PUMP (PAC2K36HZ or PAC2K48HZ)

PROBLEM	CHECK	SOLUTION
Pump motor will not run when switch is turned on.	Power cord, switches, circuit breaker, etc.	Reconnect power, reset breaker.
Pump motor hums when switch is turned on, but does not pump water.	Air Locked. Pump/Motor locked.	Disconnect hose at base of pump, run pump to release air, then reconnect. Replace pump/motor.
Pump makes loud noise while running	Pump bearings.	Replace pump.
	Object in impeller housing.	Clear object.
Breaker trips or fuse blows when switch is turned on.	Pump motor locked.	Replace pump/motor.
Pump will not run and power is available and pump is functional	Switch making closure contact.	Replace switch.
Pump motor running but pump is not turning.	Set screws on coupling.	Tighten set-screw / Replace coupling.

SHAFT TYPE PUMP (16" models)

PROBLEM	CHECK	SOLUTION
Pump motor will not run when switch is turned on.	Power cord, switches, circuit breaker, switch box, connections, etc.	Reconnect power cord, reset breaker. or reconnect to switch box.
Pump motor hums when switch is turned on, but does not pump water.	Object jammed into impeller blade.	Remove object.
	Air Locked.	Prime pump.
	Pump motor locked.	Replace pump.
Pump makes loud noise while running.	Pump bearings.	Replace pump.
	Object in impeller housing.	Clear object.
Breaker trips or fuse blows when switch is turned on.	Pump motor locked.	Replace pump.
Pump won't run and power is available and pump is functional.	Switch making closure contact.	Replace switch.

WATER SYSTEM

The water system consists of three primary elements: 1) Water Delivery System, 2) Spray Bar Assembly; 3) Pump. Troubleshooting of this system is fairly simple.

The Water Delivery System consists of two assemblies: A) The Water Inlet assembly and B) The Plumbing assembly.

The Water Inlet assembly is made up of three components: 1) The bulkhead fitting, 2) The float valve connection hose and 3) The float valve.

The Plumbing assembly consists of three elements: 1) Riser (PVC components), 2) Drain Valve, 3) Spray Bar Adjustment Valve. The 16 inch model has no riser or drain valve.

The Spray Bar Assembly consists of two components: 1) Spray Bar, 2) Connection Hose.

The pumps that actually move the water through the delivery system are discussed in the charts below. These charts indicate the major symptoms of problems that may be encountered with the Water System components.

WATER INLET SYSTEM

PROBLEM	CHECK	SOLUTION
Floor near the PORT-A-COOL® unit is wet. Water flow is too heavy.	Water inlet hose is loose at supply hose or inlet hose is loose at bulkhead fitting	Adjust water flow. Tighten connections and/or replace hose washers.
PORT-A-COOL® unit overflows from sump tank or is spitting water through fan.	Float valve hose is loose at bulkhead fitting or at float valve.	Tighten connections and /or replace hose washers.
	Water pressure is too high to allow float valve to shutoff. (50 psi max.)	Reduce water pressure by checking in-line reducer.
	Float valve is not seating properly.	Check for particles in valve. Replace float valve.
	Spray bar valve adjustment.	Close down adjustment valve to reduce excess water flow.

PLUMBING ASSEMBLY

PROBLEM	CHECK	SOLUTION
Water spitting from the unit.	Cracked riser assembly. Spray Bar Adjustment valve.	Replace riser assembly.
Water leaking from Drain Valve.	Washer worn.	Replace washer.
	Stem worn.	Replace Drain Valve.
Water leaking from Spray Bar Valve.	Washer worn.	Replace washer.
	Stem worn.	Replace Spray Bar Valve.

PORT-A-COOL® UNIT MUST BE IN UPRIGHT POSITION WITH COOLING PADS INSTALLED!

All models utilize a single power cord and control switches. Before connecting the plug to an outlet, insure that there is no standing water where the cord may lie or the operator is standing. The use of separate multiple outlet devices are not recommended.

When making electrical connections insure that local and national codes are adhered to. Use only with GFCI Protected Receptacles. Please refer to the Barcode Product Label on the side of the unit for specific electrical requirements.

III. OPERATING PROCEDURES

A. Specifications

Each model of the PORT-A-COOL® unit has its own set of operational specifications, sizes, weights, voltage frequency, current requirements, etc. Please ask for the specifications for your model from your distributor or check the serial number plate.

B. Placement of the PORT-A-COOL® unit.

PORT-A-COOL® unit should be used in well-ventilated areas only.

There are three primary considerations when deciding where to place the PORT-A-COOL® unit.

- 1) Fresh Air Supply - The inlet side of the PORT-A-COOL® unit (pad side) must be placed so as to insure that a smooth, uninterrupted supply of fresh air is available.
- 2) Air Pattern - The cool air discharged from (fan side) the PORT-A-COOL® unit should have a clear area in which to circulate, being as free of obstructions as possible.
- 3) Ventilation (Exhaust) - There should be a defined place in which the air from the PORT-A-COOL® unit can be exhausted from the area being cooled. This is to prevent the PORT-A-COOL® unit from recirculating air that has already been through the cooling process.

A primary consideration when actually deciding where to place the PORT-A-COOL® unit is the direction of the airflow. The PORT-A-COOL® unit creates a fan-shaped air pattern that disburse the air over a large area. This pattern may be disturbed or broken up by obstacles such as shelves, work benches, etc. It is important to insure that a clean, unbroken path for the air from the PORT-A-COOL® unit is provided to the maximum extent possible.

It may be desirable to raise the PORT-A-COOL® unit above any low obstructions in order to increase the overall coverage. When raising the height, insure that the platform constructed for holding the PORT-A-COOL® unit is stable, well constructed, and will not allow the PORT-A-COOL® unit to tip over. The PORT-A-COOL® unit must be level and in the upright position. When supporting with a platform allow for the full weight of a functioning PORT-A-COOL® unit by including the weight of the water both in the sump tank and the added weight of the water saturated cooling pads. The total weight could be in excess of 500 lbs. (227 kg.).

When the PORT-A-COOL® unit is placed near a wall or other obstruction, it is recommended that a distance of at least 3 feet (0.9144 meters) from the wall or obstruction to the face of the cooling pads be maintained. This allows the unrestricted flow of warm air to the cooling pad side of the PORT-A-COOL® unit. When using multiple units in close proximity, be sure to aim the PORT-A-COOL® unit so that the air flows compliment each other and not oppose. Opposition will negate the airflow and allow an area of dead air to accumulate between PORT-A-COOL® units.

C. Filling with water. (ALL MODELS EXCEPT FILLER CART MODELS)

Refer to Section II, Part B for details on connecting to a water supply line. Once the unit is connected to a water supply, turn on the supply valve allowing the PORT-A-COOL® unit sump tank to fill with water. Once the sump tank is full, the float valve will shut off the supply flow. (50-PSI max. inlet water pressure.)

On filler cart models, fill the 22-gallon reservoir referring to the sight glass on the front of the reservoir for filling amounts. Port-A-Cool Cyclone™ 3000, Port-A-Cool JetStream™ 1600 and 2400, and Vertical Tank models come equipped with a sight tube to allow monitoring of water levels in the tank.

CAUTION - DO NOT RUN PUMP WHEN SUMP IS DRY.

D. Starting the pump and adjusting the water flow.

Once the sump tank is full, moving the pump switch to the "ON" position will turn on the pump.

When initially turning on the pump, the level in the sump will drop suddenly and restart the flow of supply water. This is a normal condition, as the cooling pads require a large amount of water for proper wetting.

When the PORT-A-COOL® unit is new, the new pads will require an initial 'breaking-in' period. This period is required for the pads to begin readily absorbing water. It may require up to a week to achieve maximum efficiency.

It is important to insure that the spray bar is properly adjusted when first starting the water flow in the PORT-A-COOL® unit. Increasing the flow using the SPRAY BAR ADJUSTMENT valve on the side of the unit makes this adjustment.

E. Starting the fan. (Cooling pads must be installed and caster brakes must be engaged.)

Starting the fan is as simple as turning the fan switch to the "ON" position or to one of the available speeds on the multi-speed models. On the multi-speed model, it is preferred to step slowly through the speeds allowing the fan to obtain its full speed at the LOW speed before going to MEDIUM and before going to HIGH.

Proper adjustments should leave the pads saturated with water, but not flooded. Pads should appear wet, however, cascading amounts of water can actually reduce cooling efficiency. Proper adjustment will prevent problems and increase cooling capacity.

When turning the fan off at the end of the day or week, the pump should be turned off about 15 minutes before the fan to allow the cooling pads to dry. This will increase the life of the pads.

PROBLEM	CHECK	SOLUTION
Too many dry streaks in the pads.	Holes in spray bar blocked by foreign material.	Remove and clean spray bar. Clean individual holes.
Water spitting from the unit.	Hose connection loose.	Tighten hose. Replace hose and washer. Reseat spray bar end caps
Excess water in air coming from the fan.	Pad Installation	Pads must be installed according to air flow direction label on the pad.

SUBMERSIBLE PUMPS PROBLEM CHECK SOLUTION

PROBLEM	CHECK	SOLUTION
Pump will not run when switch is turned on.	Power cord, switches, circuit breaker, switch box, connection, etc.	Reconnect power, reset breaker or reconnect in switch box.
	Air lock in hose.	Disconnect hose at base of pump, run pump to release air, then reconnect.
Pump hums when switch is turned on, but does not pump water.	Inlet filter clogged.	Clean filter.
	Pump motor locked.	Replace pump.
Breaker trips or fuse blows when switch is turned on.	Wiring short in line between pump and switch box.	Check and/or replace wiring.
Pump cycling on and off periodically	Sump tank is empty.	Fill with water.
	Spray bar valve is closed.	Open valve.
Pump will not run and power is available and pump is functional.	Switch making closure contact.	Check continuity/ Replace switch.

BELT DRIVE MODELS

PROBLEM	CHECK	SOLUTION
Fan motor won't run and makes no sound.	Power cord, switches, circuit breaker, etc.	Check switch connection Reconnect power, reset breaker.
Fan motor won't run and makes a humming sound.	Blade in contact with shroud	Check mounting bolts.
	Motor stalled (will not turn by hand)	Replace motor.
Breaker trips or fuse blows when fan is started.	Motor stall (as above).	Replace motor.
	Other items on circuit.	Remove other items.
Motor overheating and shutting off and restarting several minutes later.	Inlet air obstructed or too close to wall.	Provide minimum 36 inch inlet clearance.
Switch making good contact. makes soft clicking sound.	Faulty motor. Replace switch	Replace motor.
Fan motor won't run and has a burning smell and hums.	Motor stall (as above).	Replace motor.
Fan blade doesn't turn and unit makes squealing sound.	Fan Belt, loose.	Tighten or replace fan belt.
	Fan pulley spinning on shaft.	Tighten pulley set screw.
Fan belts do not last very long.	Motor and fan pulleys misaligned	Realign motor and mount.
Fan will not reach speed but turns and makes humming sound.	Capacitor (where visible) and motor electrical connections.	Replace motor.

DIRECT DRIVE MODELS

PROBLEM	CHECK	SOLUTION
Fan motor won't run and makes no sound.	Power cord, switches, circuit breaker, etc. cord, reset breaker.	Check switch connection Reconnect power
Fan motor won't run and makes a humming sound.	Blade in contact with shroud	Check mounting bolts.
	Motor stalled (will not turn by hand)	Replace motor.
Breaker trips or fuse blows when fan is started.	Motor stall (as above).	Replace motor.
	Other items on circuit.	Remove other items.
Motor overheating and shutting off and restarting several minutes later.	Inlet air obstructed or too close to wall.	Provide minimum 36 inch inlet clearance.
Fan motor won't run and switch makes soft clicking sound.	Faulty motor. Switch making good contact.	Replace motor. Replace switch.
Fan motor won't run and has a burning smell.	Start capacitor leaking from cover.	Replace motor .
	Motor stall (as above).	Replace motor.

IV. MAINTENANCE & STORAGE

Very little maintenance is actually required on the PORT-A-COOL® unit. The primary topic that accounts for most of the maintenance is cleanliness. Keeping the PORT-A-COOL® unit clean will do more than any other single item to keep your PORT-A-COOL® unit in peak operating condition. The rugged, corrosion-resistant construction of the PORT-A-COOL® unit and industrial grade components make for the low maintenance characteristics. In exceedingly dusty or dirty environments, optional filters are available from your distributor (PAC-FRAME-16, PAC-FRAME-24, PAC-FRAME-36, PAC-FRAME-48).

A. Daily Maintenance

Daily maintenance is really more an operational consideration than actual maintenance. On a daily basis, the pump should be turned off approximately 15 minutes before the fan is turned off. This will allow the cooling pads to dry out and help extend their life, helping to control the growth of mildew, mold, bacteria and other odor causing elements.

B. Weekly Maintenance

At the end of the week or at a scheduled time, the unit should be shut down and the sump tank should be drained. Closing the Spray Bar Adjustment Valve and opening the Drain Valve accomplish this. If it is desired, a hose may be attached to the Drain Valve to direct the drained water to a remote disposal area. Once the Drain Valve is open, starting the pump will drain the unit. When the pump has removed most of the water a small amount will be left in some areas. In the 16" models, removal of the drain plug will accomplish the same results without the use of the pump.

In the 16" SFC models, disconnect the inlet hose going into the side of the unit and use the pump to drain the unit. The Port-A-Cool Cyclone™ 3000, Port-A-Cool JetStream™ 1600 and 2400 and Vertical Tank models all come equipped with a drain plug.

Once the sump is drained and the power disconnected, the pads may be removed to allow inspection of the sump tank. Assuming that the PORT-A-COOL® unit is in a dusty environment, dust will collect in the sump tank over time. This dirt and any remaining water may be vacuumed out using a wet/dry shop vacuum and wiped clean with a cloth. Also, inspect and clean the Inlet Strainer located on the bottom of the pump. Replace pads in correct airflow direction, referring to label on the pads.

C. Storage

Storage of the PORT-A-COOL® unit is very simple.

- 1) Drain all water from the sump tank and clean as above, ensuring that the pads and sump are completely dry.
- 2) Roll up the electrical power cord and secure it to ensure that it will not be rolled over, tripped over or caught in equipment.
- 3) Cover the PORT-A-COOL® unit completely to prevent dust build-up and store in a dry area. This also helps prevent damage to the pads. Optional dust covers are available from your distributor. (P/N #: PAC-CVR-01, PAC-CVR-02, PAC-CVR-03).

CAUTION: DISCONNECT POWER BEFORE REMOVING COOLING PADS FROM THE PORT-A-COOL® unit!!

NOTICE: POWER CORD MAY BE REPLACED ONLY BY THE MANUFACTURER OR QUALIFIED AGENT!!

D. TECHNICAL SUPPORT

Technical support and service is available directly from your distributor or call PORT-A-COOL, LLC Technical Support Hot Line at 888-266-5243 (888-COOL-AID) for the distributor nearest you. You may also contact the Support Hot Line for consultation on parts replacement.

Please have serial number and model number of unit available.

V. REPLACEMENT PARTS

A. Returned Merchandise Authorization (RMA) Procedures

All Port-A-Cool® units, parts, or materials being returned to PORT-A-COOL, LLC for warranty replacement or repair require an RMA (Return Merchandise Authorization) number.

There are two methods for replacing warranty parts:

1. The distributor can purchase the part with an RMA number and will only be charged for the cost of the part, not for the shipping. When the defective part is returned freight paid, the distributor's account will be credited for the cost of the part.
2. The customer / distributor can call Tech Support to get an RMA number to send the defective part back to PORT-A-COOL, LLC. Once the part is received by PORT-A-COOL, LLC, a replacement part will be sent at no charge.

Information needed to get an RMA number:

1. The UNIT serial number.
2. The UNIT model number (ex. PAC2K363S)
3. The part number or description of the part to be replaced.

Only major component parts need an RMA number, i.e. fans, motors, pumps, and some plumbing parts. For replacement of small parts, the serial and model numbers are still required, but the parts do not need to be returned to Port-A-Cool, LLC.

For warranty replacement parts call PORT-A-COOL® Technical Support at 1-888-266-5243. FAX: 936-598-1431.

Shipping Address
PORT-A-COOL, LLC
721 FM 2468
Center, Texas 75935

Mailing Address:
PORT-A-COOL, LLC
P.O. Box 2167
Center, Texas 75935

B. Port-A-Cool® Unit Limited Warranty

For one year from date of installation, Port-A-Cool, LLC. warrants any original component part or parts of the Port-A-Cool® evaporative unit found, upon examination by factory-authorized personnel, to be defective in material or workmanship, excepting, however, that the high-performance, fan motor utilized as a component of the Port-A-Cool® HP portable evaporative cooling unit shall be warranted by Port-A-Cool, LLC for a period of three years from the date of installation. All transportation charges on parts submitted for replacement or repair under this warranty must be borne by the purchaser. If said equipment develops such defects within this period, it will be repaired or replaced at our option. For breach of any implied or written warranty on this product, Port-A-Cool, LLC., shall not be liable for any incidental or consequential damages. This warranty is declared void if the equipment is found to have been misused, abused or tampered with by unauthorized personnel.

Due to warranty limits placed on our products by the original manufacturers, our warranty is limited on manufactured units and their original component parts as well as replacement parts to a total of one (1) year after the date of installation, with the above noted 3-year warranty relating to the high-performance fan motor utilized as a component of the Port-A-Cool® HP portable evaporative cooling unit being the only exception.

VI. TROUBLESHOOTING / REPAIR

A. Troubleshooting

The most common problems encountered with a PORT-A-COOL® unit are operational problems. The PORT-A-COOL® unit consists of three systems. It is important to determine which system of the PORT-A-COOL® unit the problem is associated with. Certain problems may be associated with more than one system.

When determining which system that the problem is associated with you must first define the problem, i.e., the pump is not running. Although this might seem a bit over-simplified, several things may cause a particular problem. So while defining the problem, a careful check of all systems should be made to fully understand the extent of the problem.

If you have a complete understanding of all the systems of the PORT-A-COOL® unit and how they depend on each other, it becomes much simpler to define and solve any problems.

Although the PORT-A-COOL® unit is designed to be simple to maintain, it will be necessary to have some basic hand tools (screwdrivers, pliers, adjustable wrenches, etc.) as well as a volt/ohm meter for troubleshooting the electrical system.

FAN SYSTEM

This section is divided into the two categories of fans used on all PORT-A-COOL® models: Direct Drive and Belt Drive. Both have some symptoms in common, and both have problems that are particular to each.

CAUTION

Please use caution when troubleshooting or repairing all electrical components. Be certain that all power is disconnected from the PORT-A-COOL® unit before the cooling pads are removed to gain access to the fan.

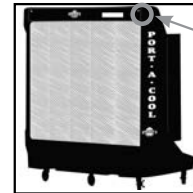
B. Repair and Replacement Procedures

Ensure that all water is removed from the PORT-A-COOL® unit and all power is disconnected. Remove all impediments to access the component you are checking or replacing.

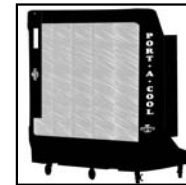
REPLACING THE COOLING MEDIA (Pads) (All Models)

Caution - Disconnect power before performing this operation!!

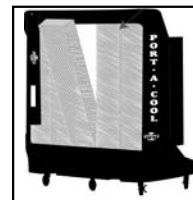
The flap must be removed to allow access to the cooling pads. Start with the center pad, which should be tilted out from the top and lifted out of the drain trough. The two pads to either side of the center pad may then be removed in the same manner. Should you desire to remove the two outside pads, they must first be pulled sideways toward the center of the PORT-A-COOL® unit until they clear the side retainer. They may then be removed in the same manner as the other pads.



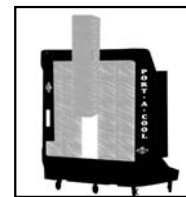
Locate the set screw in the rear of the unit on the upper right side



Remove set screw and lower front flap to vertical position (see illustration)

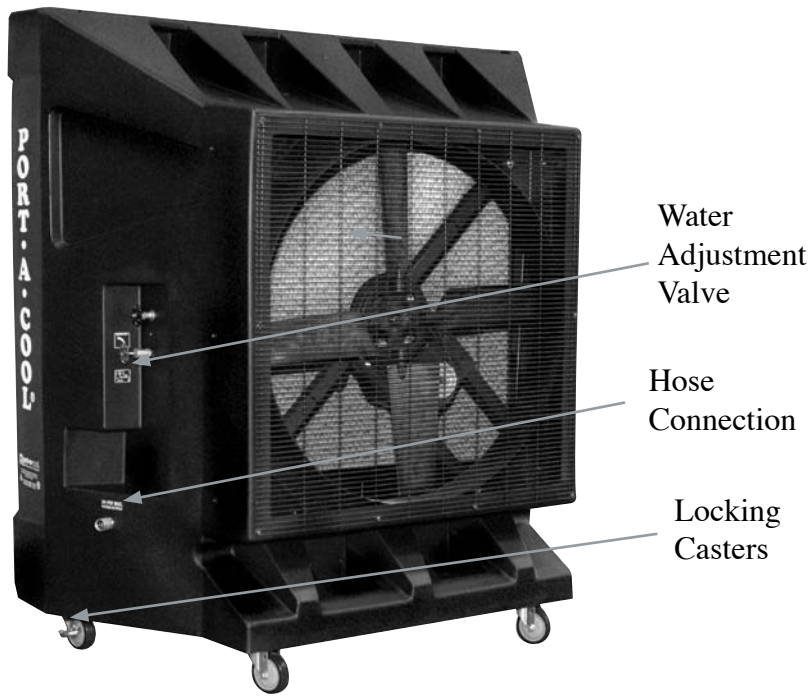
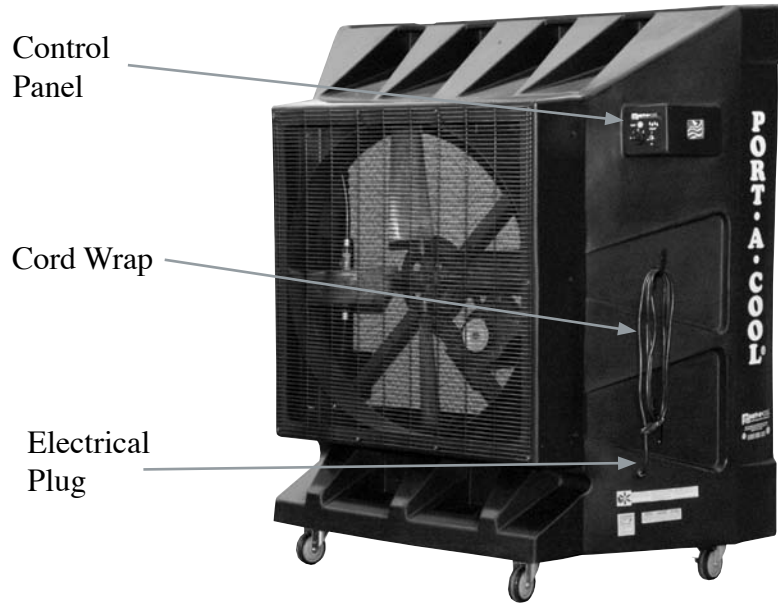


Once the front flap is moved, grasp the right pad and tilt out at a 90 degree angle (see illustration).



Pull the pad up to remove from unit. Repeat for other pads.

PORT-A-COOL® UNIT OVERVIEW



C. FAN MOTOR REPLACEMENT

Belt Drive Models (PAC2K361S, PAC2K363S, PAC2K482S)

1) DISCONNECT POWER and remove the pads as shown on page 15.
 2) Motor is located in center of unit. Switch box is located in upper left. **(Figure 1)** Locate motor harness wire secured to fan bracket assembly using plastic ties. Cut and remove plastic wire ties. DO NOT CUT ELECTRICAL HARNESS WIRES.

3.) Remove switch box cover. **(Figure 2)** Unplug motor wire harness connector. Push rubber grommet on motor wire harness through switch box opening and remove motor harness from switch box.

4) Loosen four (4) bolts that secure the motor mounting plate. This will allow the motor plate to move up or down. Loosen and remove the belt from the motor pulley. **(Figure 3)**

5) On front of motor mount, remove belt pulley by loosening set-screw. Remove four (4) lock nuts securing motor to mount. Remove motor by sliding straight back out of mounting holes.

6) Install new motor by reversing steps above. (A.) Install new motor into motor mount and install four (4) lock nuts to secure motor to mount, but do not tighten. (B) Install motor pulley on motor shaft and align with fan blade hub pulley. Install fan belt on fan blade pulley by sliding motor plate away from the fan hub. Visually align the motor pulley and fan pulley by using the belt as a reference. (C) Adjust the motor pulley in or out to align. Tighten the motor pulley setscrew. (D) Apply pressure on the motor to further tighten the belt being careful not to over tighten. (About 15 pounds of pressure is sufficient). Complete tightening of the four (4) motor plate bolts. (E) Thread terminal end of motor wire through switch box opening and plug connector into switch connector. PROPERLY RESEAT RUBBER GROMMET SEAL ON HARNESS AT OPENING IN SWITCH BOX TO KEEP WATER OUT OF CONTROL BOX. FAILURE TO DO SO COULD CAUSE ELECTRICAL SHOCK. (E) Replace switch box cover. (F) Secure motor wire harness to fan bracket assembly using new wire ties. (G) Replace pads by installing from outside in toward center replacing center pad first.

7) Reconnect the unit power and test motor.

FAN MOTOR REPLACEMENT

Direct Drive Models (PAC2K36HPVS, PAC2K24HPVS, PAC2K163S, PAC2K163SHD, PAC2K163SFC, PAC2K16HPVS, PAC2K16HPVSFC)

1) DISCONNECT POWER and remove pads as shown on page 15.
 2) Motor is located in center of unit. Switch box is located in upper left. Locate motor harness wire **(Figure 1)** secured to fan bracket assembly using five plastic wire ties. Cut and remove plastic wire ties. DO NOT CUT ELECTRICAL WIRES.

3) Remove switch box cover. Unplug motor harness wire connector. Push rubber grommet on motor wire harness through switch box opening and remove motor harness wire from switch box. Disconnect motor harness at the quick release connector. **(Figure 2 NEXT PAGE)**

4) Remove the screen from the front of the unit to access the fan side of the unit.

5) Loosen the nut from the threaded motor shaft and take the fan blade off. **(Figure 3 NEXT PAGE)**

6) Locate the 8 bolts (2 on each arm) holding the motor in place. (NOTE: the position of the motor on the mounting arms. Make sure to mount it in the correct railings of the motor housing and at the correct distance from front or back on all four arms to ensure stability and alignment) **(Figure 4 NEXT PAGE)**

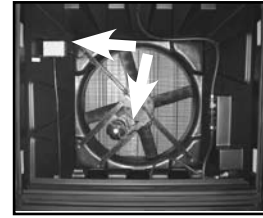


Figure 1

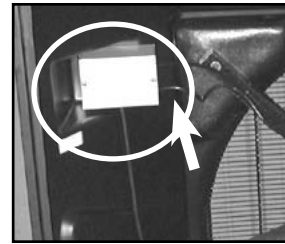


Figure 2



Figure 3



PORT-A-COOL JETSTREAM™ UNIT OVERVIEW

- 7) Loosen these bolts just enough to slide the old motor out; don't remove the bolts completely. Replace with new motor.
- 8) Thread terminal end of motor wire through switch box wire opening and plug five-pin connector into switch connector. that rubber grommet seal on harness is properly seated to keep water out of control box.
- 9) Replace switch box cover.
- 10) Secure motor wire to fan bracket assembly using new wire ties.
- 11) Replace pads by installing from outside toward center replacing center pad last.
- 12) Replace blade and screen to front of unit.

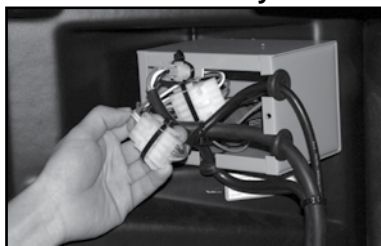


Figure 2



Figure 3

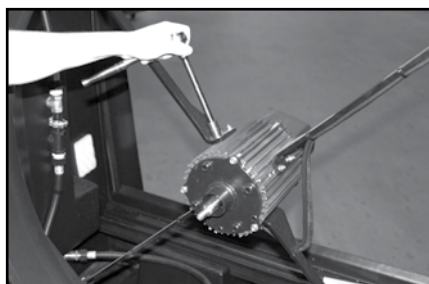
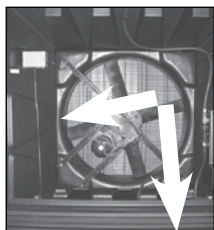


Figure 4

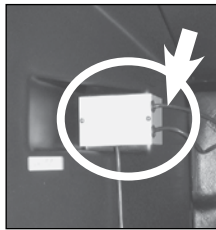
PUMP REPLACEMENT

MODELS PAC2K482S, PAC2K361S, PAC2K363S, PAC2K36HPVS, PAC2K24HPVS

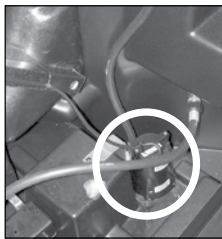
- 1) DISCONNECT POWER and remove pads as shown on page 15.
- 2) Pump is in lower right of unit. Control box is in upper left. Locate pump wire (⚡) secured to fan bracket assembly using plastic wire ties. Cut and remove plastic ties. DO NOT CUT ELECTRICAL WIRES. (Figure 1)
- 3) Remove screws from control box cover. Unplug pump wire connector. Push rubber grommet on pump wire through control box opening and remove pump harness wire from control box. (Figure 2)
- 4) Locate pump in lower right corner of the unit. Remove hose from pump by unscrewing hose connection. Remove two screws holding pump bracket to the unit housing. Remove entire pump assembly from the unit. (Figure 3)
- 5) INSTALL NEW PUMP BY REVERSING ABOVE PROCEDURES. (1.) Install new pump on pump bracket and attach bracket to housing. Replace pump hose. (2.) Thread terminal end of pump wire through control switch box and plug pump terminal into switch.
- 6) IMPORTANT: Ensure that rubber grommet seal is in properly seated to keep water out of switch box.
- 7) Replace switch box cover. Secure pump wire to fan bracket assembly using new bundle ties.
- 8) Replace pads by installing pads from outside toward center replacing center pad last. Replace pad flap with screws.



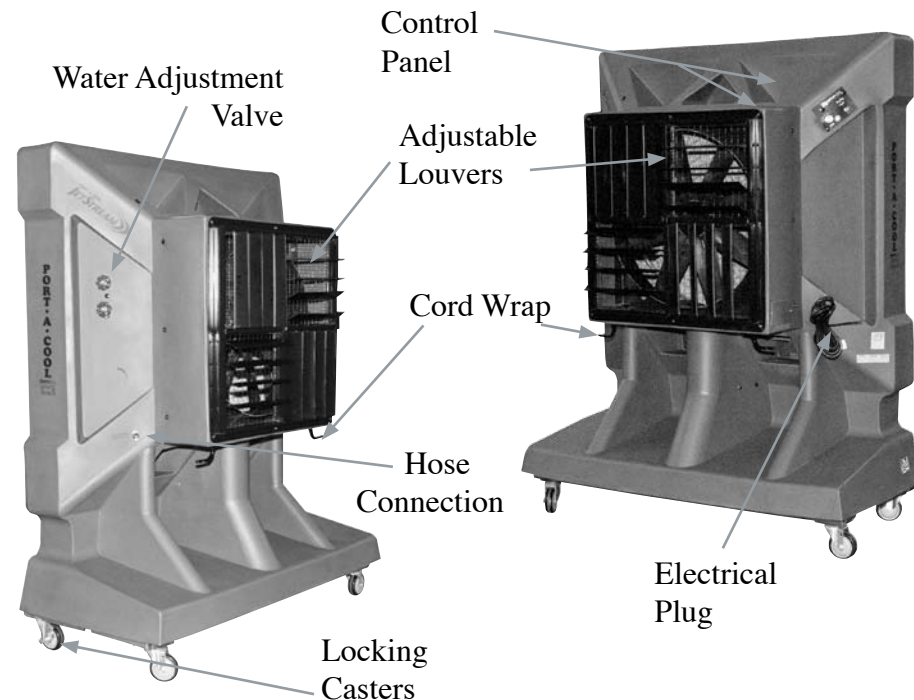
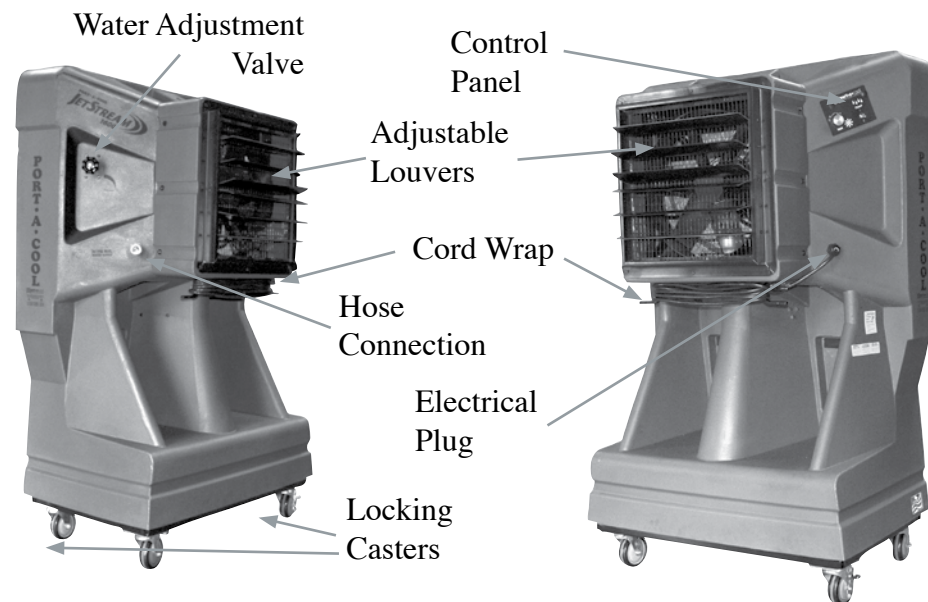
(Figure 1)



(Figure 2)



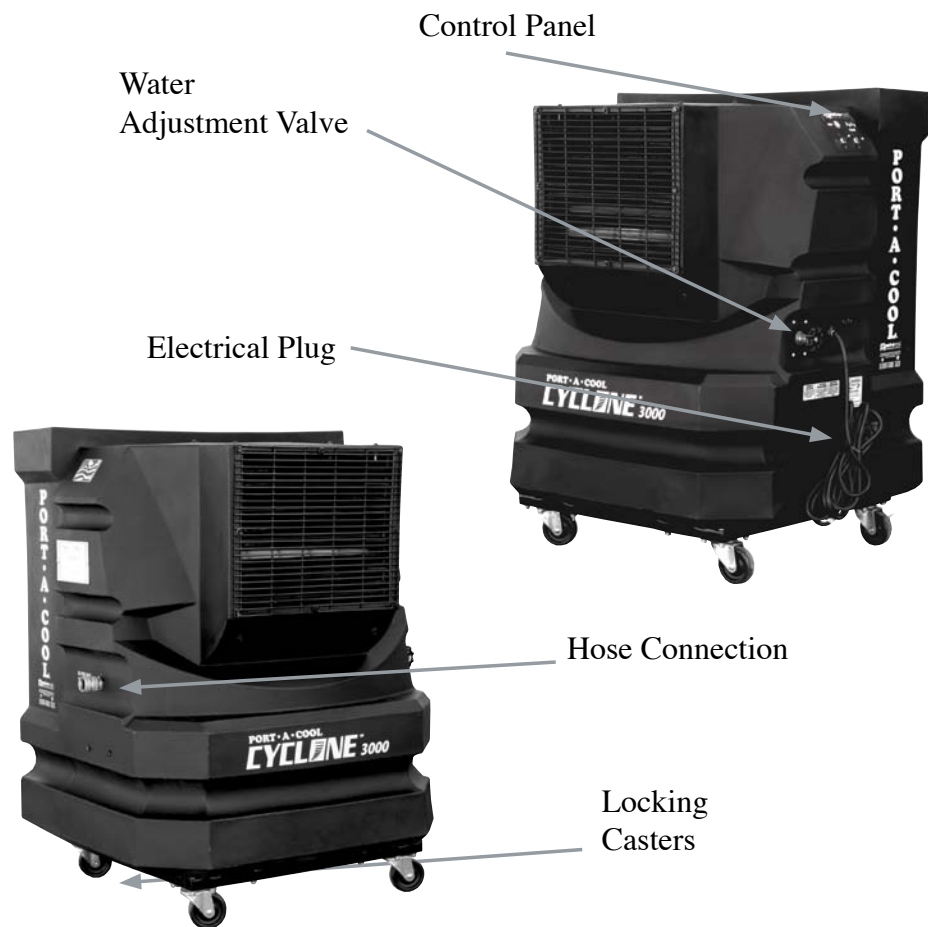
(Figure 3)



UNIT OPERATION WARNINGS

- 1) not intended for use by children
- 2) not intended for use by persons with reduced physical, sensory or mental capabilities
- 3) not intended for use by persons with lack of experience and knowledge, unless they have been given instruction and are supervised during operation
- 4) children should be supervised to ensure that they do not play with the appliance

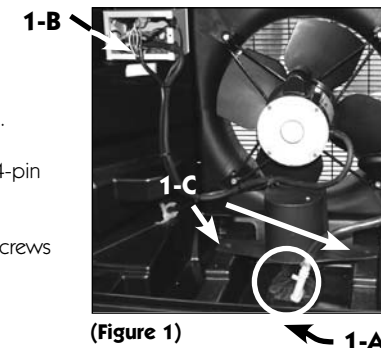
PORT-A-COOL CYCLONE™ 3000 UNIT OVERVIEW



PUMP REPLACEMENT

MODELS PAC2K163S, PAC2K163SHD, PAC2K16HPVS

- 1) DISCONNECT POWER and remove pads.
- 2) Remove output tubing from insert fitting on base of pump.
(Figure 1-A)
- 3) Remove the switch box wiring cover and disconnect the 4-pin quick release connector from the pump switch assembly.
(Figure 1-B)
- 4) Remove the pump from the sump tank by removing two screws that hold the pump cover and pump in place.
(Figure 1-C)
- 5) Remove the pump cover from old pump install onto the new pump.
- 6) Reverse the above procedures to install the new pump.
- 7) Replace the cooling pads, positioning as shown on the air flow label.
- 8) Reconnect the unit power and test pump.



(Figure 1)

PUMP REPLACEMENT

MODEL PAC2K163SFC, PAC2K16HPVSFC

- 1) Disconnect electrical power to unit and remove pads.
- 2) Remove the cover plate on the electrical box to disconnect the motor quick connect and the zip ties holding it together.
(Figure 1)
- 3) Remove two screws that hold the strain relief bracket in order to take the pump cord out of the unit.
(Figure 2)
- 4) Unscrew the 6" drain pipe located under the fan housing. Slide the tank outside the caddy base to access the pump bracket.
- 7) Remove the two screws that hold the bracket to the tank. Remove the bracket and hose from the pump by loosening the fastening screws and hose clamp.
- 8) Install new pump by reversing above steps.



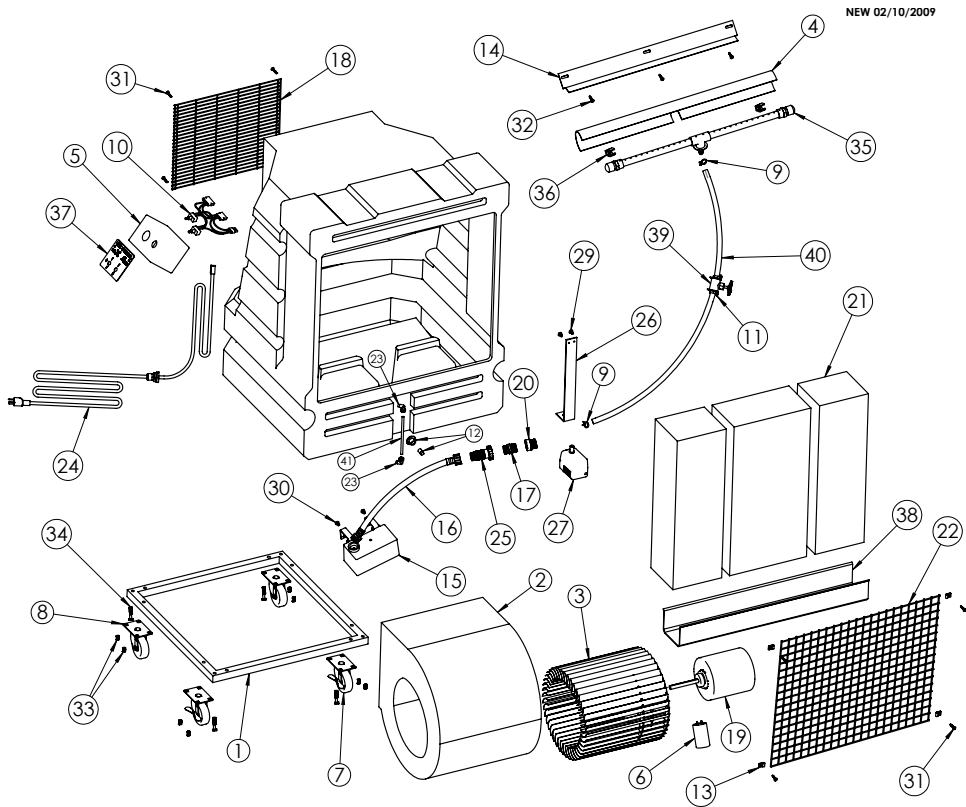
(Figure 1)



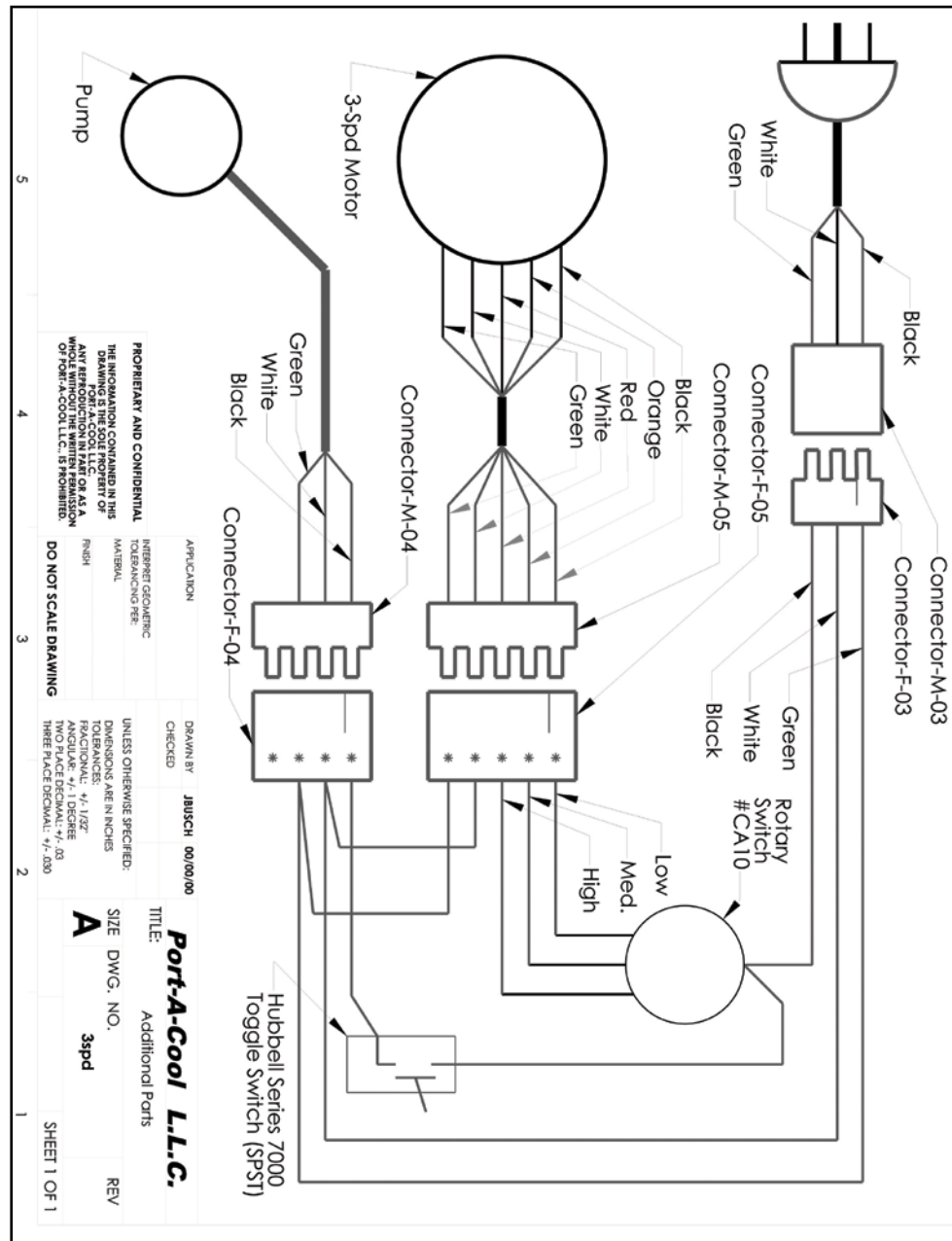
(Figure 2)

PAC2KCYC01 ORG

WIRING DIAGRAM for THREE-SPEED MODELS



ITEM#	PART #	DESCRIPTION	ITEM#	PART #	DESCRIPTION
1	BASE-CYCLONE	CADDY FRAME	22	PAD-SCREEN-CYL	CYCLONE UNIT PAD SCREEN
2	BLOWER-01	BLOWER HOUSING	23	POLY-FTG-06	90 DEG. FITTING FOR SIGHT TUBE
3	BLOWER-WHL-01	BLOWER WHEEL	24	POWERCORD-02	10ft POWER CORD W / DOME STRAIN RELIEF
4	BONNET-05	BONNET	25	PRES-REG-01	INLET WATER REGULATOR
5	BOX-UL-02	2 SPD UL ELECTRICAL BOX	26	PUMP-BRACKET-04	ALUM. BAR PUMP BRACKET
6	CAPACITOR-01	PSU 25-30 CAPACITOR	27	PUMP-CYCLONE	CYCLONE PUMP - PEM-020
7	CASTER-3-L	3" LOCKING CASTERS	28	PVC-ADP-01	
8	CASTER-3-NL	3" CASTERS	29	RIVET-5/32-02	5/32 LARGE RIVET
9	CLAMP-01	1/2" WIRE SPRING CLAMP	30	S-004	FLOAT BOLT
10	CTRL-2SPD-01	2-SPEED SWITCH ASSEMBLY	31	S-006	TEC SCREW S006
11	CTRL-VLV-BRKT	VALVE-01 MOUNTING BRACKETS	32	S-009	10/24 x 3/3 TRUSS HEAD SCREW
12	DRAIN-PLUG-01	DRAIN PLUG	33	S-014	5/16 x 1" TRUSS HEAD SCREW
13	FANGUARDCLIP-01	CLIP	34	S-017	5/16 - 18 x 1.5" TRUSS HEAD SCREW
14	FLAP-05	FLAP	35	SPRAY-CYC-01	16" SPRAY BAR
15	FLOAT-02	FLOAT VALVE	36	SPRAY-ACC-04	SPRAY BAR CLIP
16	HOSE-FM18	18" FLOAT HOSE	37	SWTCHPL-2SPD	2 SPEED SWITCH PLATE
17	HOSE-FTG-05	SWIVEL HOSE FITTING	38	TROUGH-04	36" PAC TROUGH
18	MESH-PAC-07	CYCLONE MESH PAC	39	VALVE-01	PUMP TO SPRAY BAR CONTROL VALVE
19	MOTOR-013-07	1/3 HP - 2SPD MOTOR	40	TUBE-01	PUMP TO SPRAY BAR TUBING
20	PAC-PLB-01	INLET HOSE ADAPTER	41	TUBE-03	SIGHT TUBE
21	PAD6022/26	KUUL PAD SET FOR CYCLONE			



PROPRIETARY AND CONFIDENTIAL
 THE INFORMATION CONTAINED IN THIS DRAWING IS THE SOLE PROPERTY OF FORT-A-COOL, L.L.C. IT IS FORNISHED TO YOU WITHOUT THE WRITTEN PERMISSION OF FORT-A-COOL, L.L.C. IT IS FORNISHED TO YOU WITHOUT THE WRITTEN PERMISSION OF FORT-A-COOL, L.L.C.

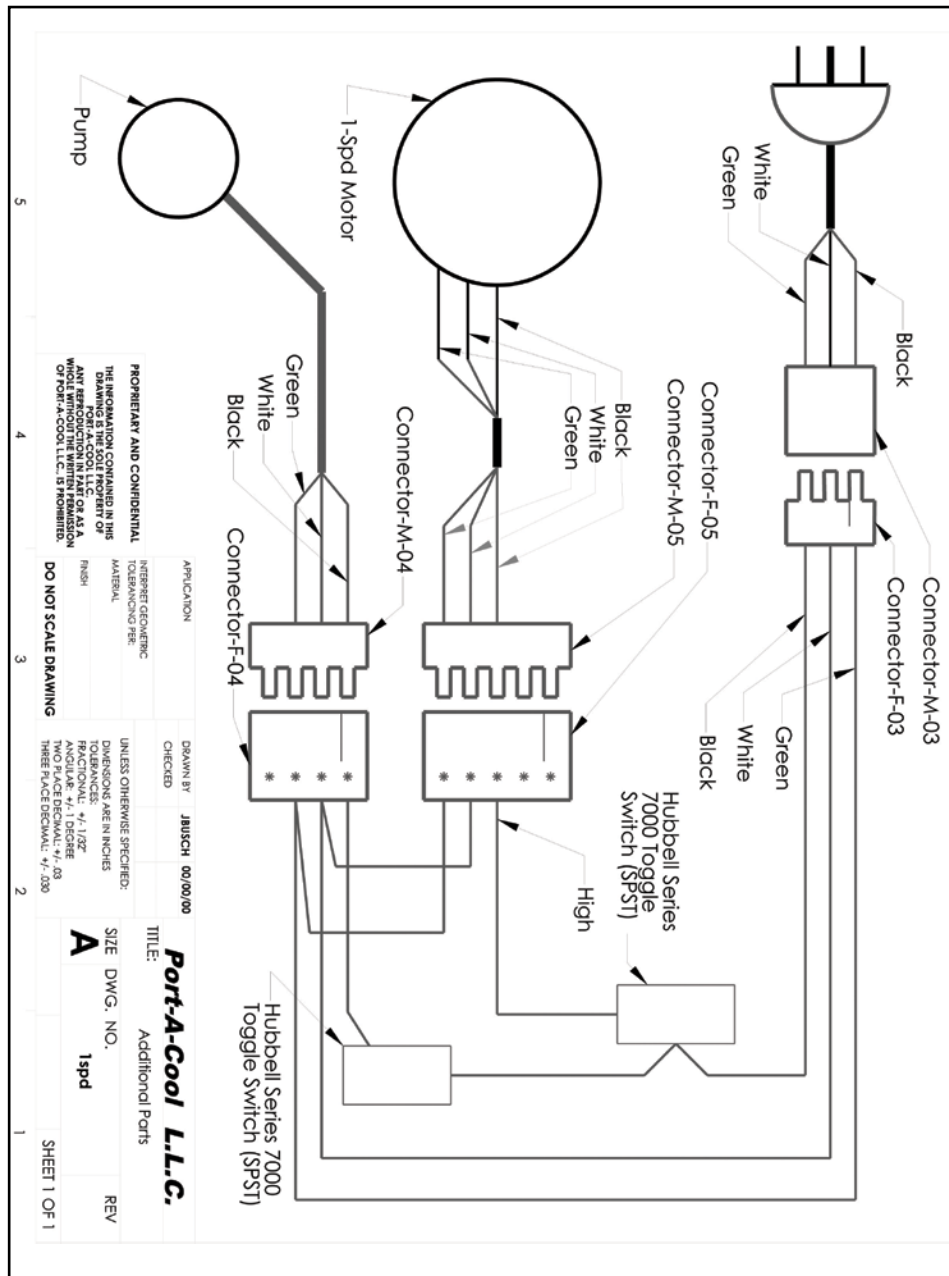
INTERNET GEOMETRIC TOLERANCING PER: FINISH
 UNLESS OTHERWISE SPECIFIED: DIMENSIONS ARE IN INCHES
 TOLERANCES: FRACTIONAL: +/- 1/32"
 ANGULAR: +/- 1 DEGREE
 TWO PLACE DECIMAL: +/- .03
 THREE PLACE DECIMAL: +/- .003

APPLICATION: DRAWN BY: JUSCH 00/00/00
 CHECKED: TITLE: **Port-A-Cool L.L.C.**
 Additional Parts
 SIZE DWG. NO. **A**
 3spd
 REV/

SHEET 1 OF 1

220/50 and 220/60 models may require additional parts. Please contact Customer Service at 936-598-5651 for assistance

WIRING DIAGRAM for ONE-SPEED MODELS



PROPRIETARY AND CONFIDENTIAL
 THE INFORMATION CONTAINED IN THIS DIAGRAM IS THE PROPERTY OF PORT-A-COOL, L.L.C. ANY REPRODUCTION IN PART OR AS A WHOLE WITHOUT THE WRITTEN PERMISSION OF PORT-A-COOL, L.L.C. IS PROHIBITED.

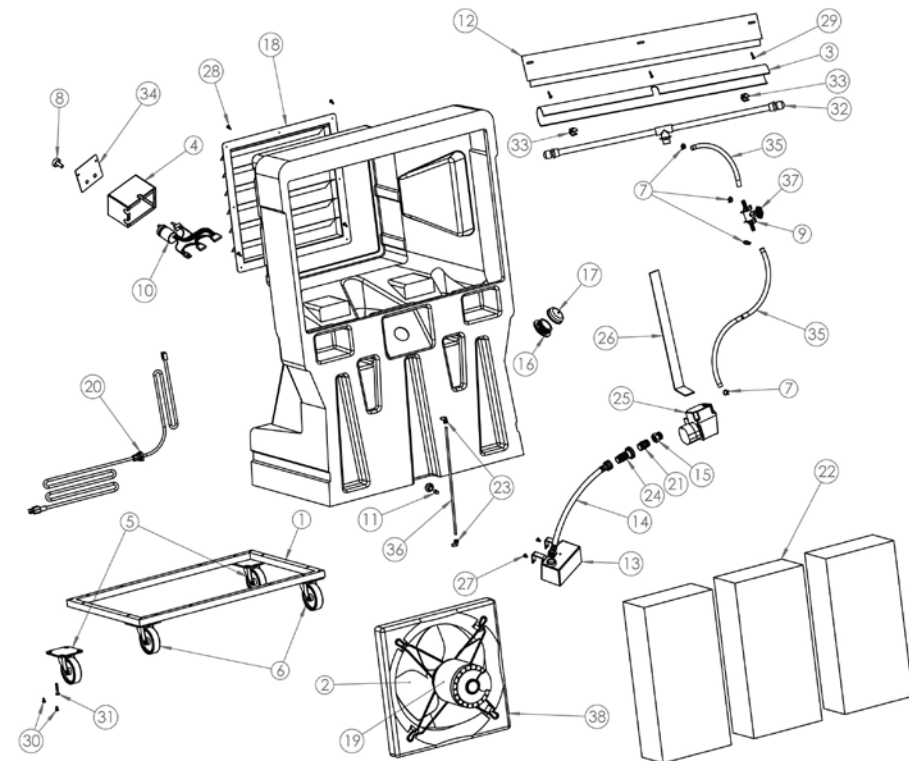
APPLICATION: INTERNET GEOMETRIC TOLERANCES PER: MATERIAL: FINISH: DO NOT SCALE DRAWING

DRAWN BY: JBS/CH 00/00/00
 CHECKED: UNLESS OTHERWISE SPECIFIED, DIMENSIONS ARE IN INCHES. TOLERANCES: FRACTIONAL: +1/128" MINUS: -1/128" DECIMAL: +.03 THREE PLACE DECIMAL: +.009

TITLE: **Port-A-Cool L.L.C.**
 Additional Ports
 SIZE DWG. NO. **A**
 1spd
 REV SHEET 1 OF 1

PACJS1600 ORG. SN#

& SUBSEQUENT NEW 03/02/2009

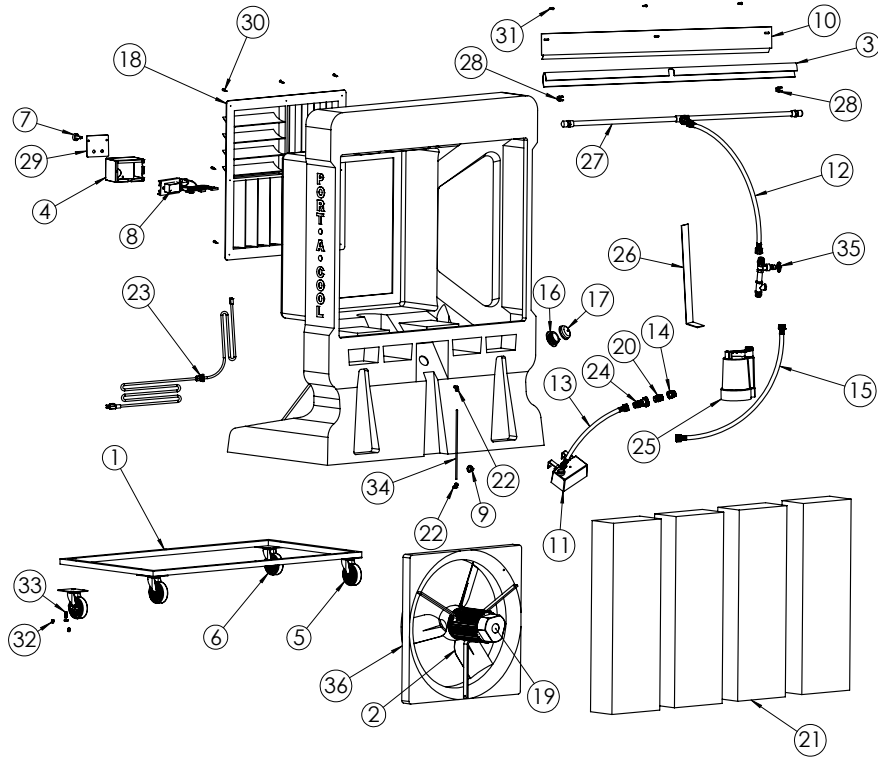


ITEM#	PART #	DESCRIPTION	ITEM#	PART #	DESCRIPTION
1	BASE-JS/VT	CASTER BASE ASSEMBLY FOR JS/VT	20	POWERCORD-02	10FT POWER CORD W/DOME STRAIN RELIEF
2	BLADE-ASSM-08	JS/VT 16" BLADE	21	PAC-PLB-01	INLET HOSE ADAPTER
3	BONNET-03	SPRAY BAR BONNET FOR 16" PAC	22	PAD6024/G	16" PAC REPLACEMENT PAD
4	BOX-UL-03	VAR SPD ELECTRICAL BOX	23	POLY-FTG-06	90DEG FITTING FOR SIGHT TUBE
5	CASTERS-JS-4	4" JS/VT NON-LOCKING CASTER	24	PRES-REG-01	INLET WATER REGULATOR
6	CASTERS-JS-4L	4" JS/VT LOCKING CASTER	25	PUMP-0140-1	PUMP ASSEMBLY FOR 16" UNIT
7	CLAMP-01	1/2" WIRE SPRING CLAMP	26	PUMP-ACC-17	JS/VS PUMP BRACKET
8	CTRL-KNOB-02	KNOB 24"VAR SPD CONTROL	27	S-004	FLOAT BOLT
9	CTRL-VLV-BRKT-1	CONTROL VALVE MOUNTING BRACKET	28	S-006	12-14 BLACK TEC SCREW
10	CTRL-VS-02	VAR SPD SWITCH HARNESS	29	S-009	10-24 X 3/4" TRUSS HEAD SCREW
11	DRAIN-PLUG-01	1/4" NPT PLUG #P-28 FOR 16"UNIT	30	S-014	5/16 X 1" TRUSS HEAD SCREW
12	FLAP-16-01	FRONT FLAP FOR 16" JETSTREAM	31	S-017	5/16 - 18 X 1.5" TRUSS HEAD SCREW
13	FLOAT-02	FLOAT VALVE	32	SPRAY-07	SPRAY BAR FOR 16" PAC
14	HOSE-FM18	18"FLOAT HOSE	33	SPRAY-ACC-04	CLAMP FASTENER FOR SPRAY BAR
15	HOSE-FTG-05	SWIVEL HOSE FITTING	34	SWITCHPL-VARSPD	SWITCH COVER PLATE
16	JS-ACC-01	2" THREADED FILLER CAP RING	35	TUBE-01	SOFT PLASTIC TUBE
17	JS-ACC-02	2" THREADED FILLER CAP	36	TUBE-03	SIGHT TUBE
18	LOUVERS-JS	FRONT LOUVER FOR JS/VT UNITS	37	VALVE-01	PUMP TO SPRAYBAR CONTROL VALVE
19	MOTOR-013-04	1/6HP VOSTERMAN MOTOR	38	VENT16-INJ-01	VENTURI FOR 16" FAN

220/50 and 220/60 models may require additional parts. Please contact Customer Service at 936-598-5651 for assistance

PACJS2400

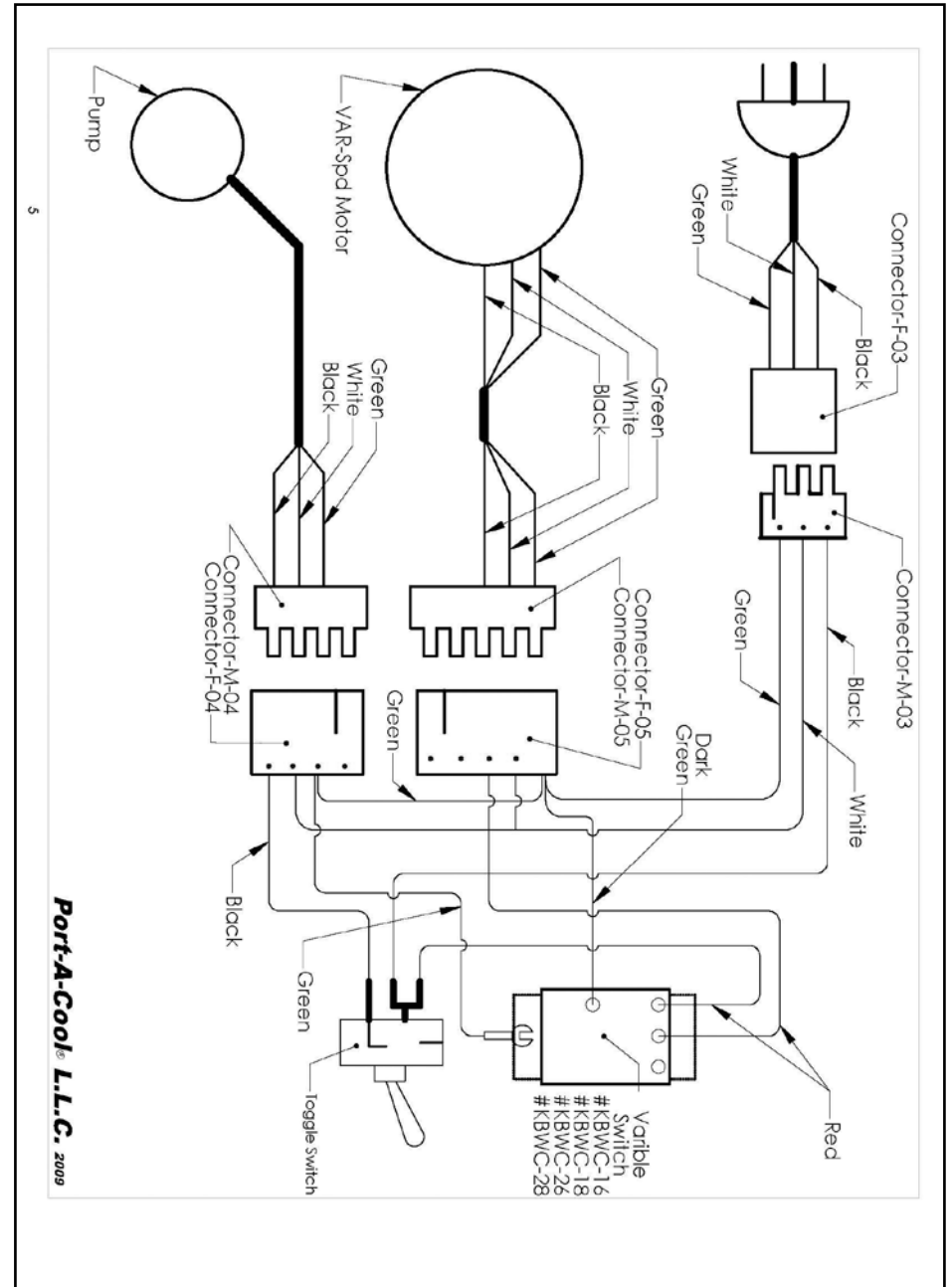
NEW 01/22/2010



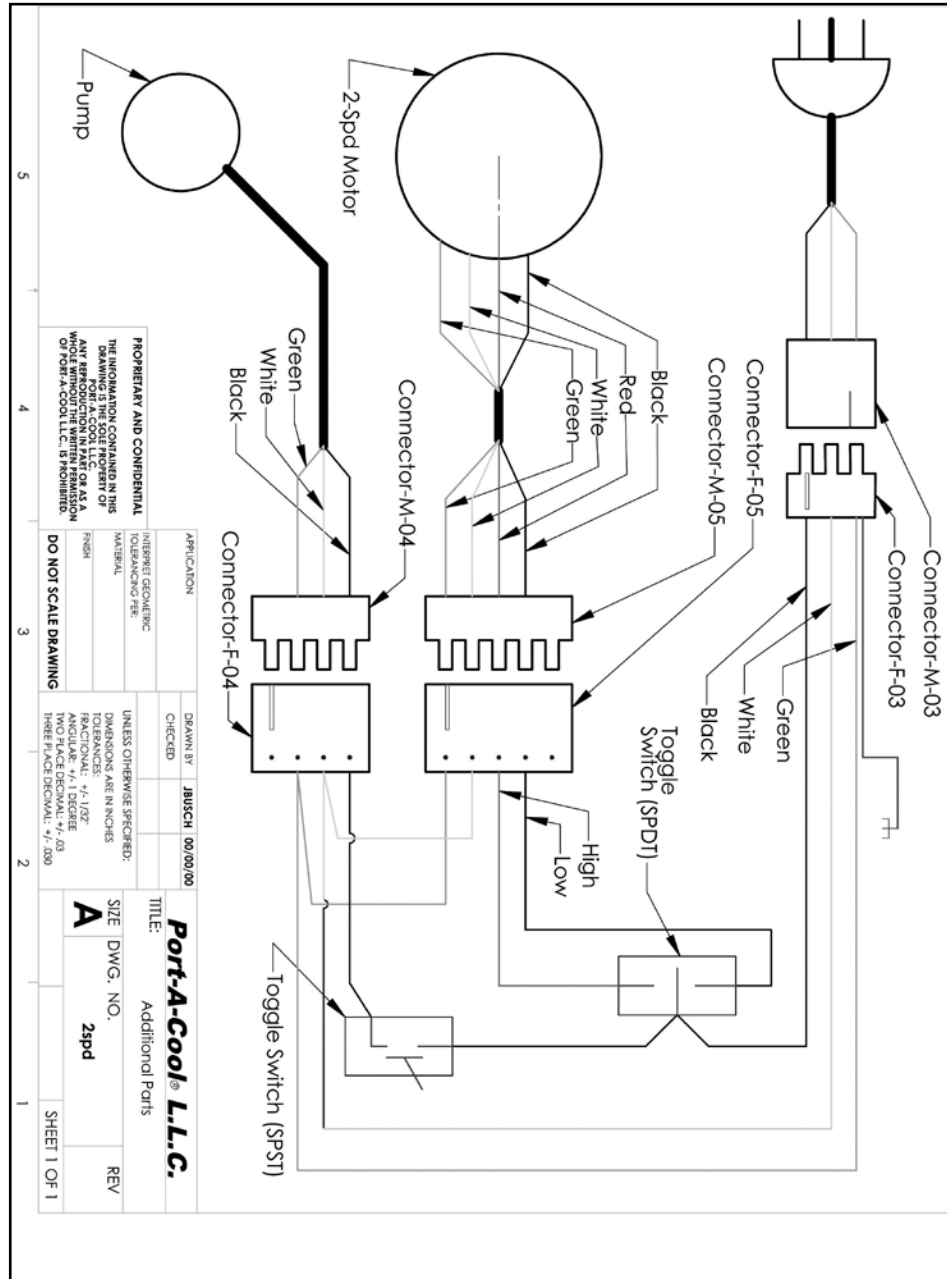
ITEM#	PART #	DESCRIPTION	ITEM#	PART #	DESCRIPTION
1	BASE-JS-24	CASTER BASE ASSEMBLY	19	MOTOR-012-06	24" HP MOTOR
2	BLADE-ASSM-24	24" JS FAN BLADE	20	PAC-PLB-01	INLET HOSE ADAPTER
3	BONNET-02	SPRAY BAR BONNET FOR 24" PAC	21	PAD6036/G	24" REPLACEMENT PAD
4	BOX-UL-03	VAR SPD ELECTRICAL BOX	22	POLY-FTG-06	90DEG. FITTING FOR SITE TUBE
5	CASTERS-JS-4	4" JS/VT CASTER	23	POWERCORD-02	POWERCORD W/ DOME STRAIN RELIEF
6	CASTERS-JS-4L	4" JS/VT LOCKING CASTER	24	PRESS-REG-01	INLET WATER REGULATOR
7	CTRL-KNOB-02	KNOB FOR 24" VAR/SPD CONTROL	25	PUMP-016-4R	PUMP 1/6 HP (LG)
8	CTRL-VS-02	24" VAR/SPD SWITCH HARNESS ASSM	26	PUMP-ACC-18	JS/VT PUMP BRACKET
9	DRAIN-PLUG-01	1/4" NPT PLUG	27	SPRAY-04	SPRAY BAR FOR 24" PAC
10	FLAP-24-01	FLAP FOR 24" PAC	28	SPRAY-ACC-01	#12 NYLON CLIP
11	FLOAT-02	FLOAT VALVE BOX	29	SWITCHPL-VARSPD	VAR SPD SWITCH COVE PLATE
12	HOSE-FF-35	1/2" X 35" FEM/FEM HOSE	30	S-006	#12 X 1 1/4" TEK SCREW
13	HOSE-FM18	18" FLOAT HOSE	31	S-009	10-24 X 3/4" TRUSS HEAD SCREW
14	HOSE-FTG-05	FEM/FEM 3/4" X 3/4" BRASS SWIVEL	32	S-014	5/16" - 1" TRUSS HEAD SCREW
15	HOSE-F47	SINGLE FEM HOSE PLUMBING TO PUMP	33	S-017	5/16" - 18 X 1.5" TRUSS HEAD SCREW
16	JS-ACC-01	2" TREADED RING	34	TUBE-03	1/4" POLY SIGHT TUBE
17	JS-ACC-02	2" TREADED CAP	35	VALVE-01	1/2" GATE VALVE
18	LOUVERS-JS-24	LOUVER W/MESH FOR 24" JS/VT	36	VENTURI-24-02	24" VENTURI

220/50 and 220/60 models require additional parts. Please contact Customer Service at 936-598-5651 for assistance

WIRING DIAGRAM for VARIABLE SPEED MODELS

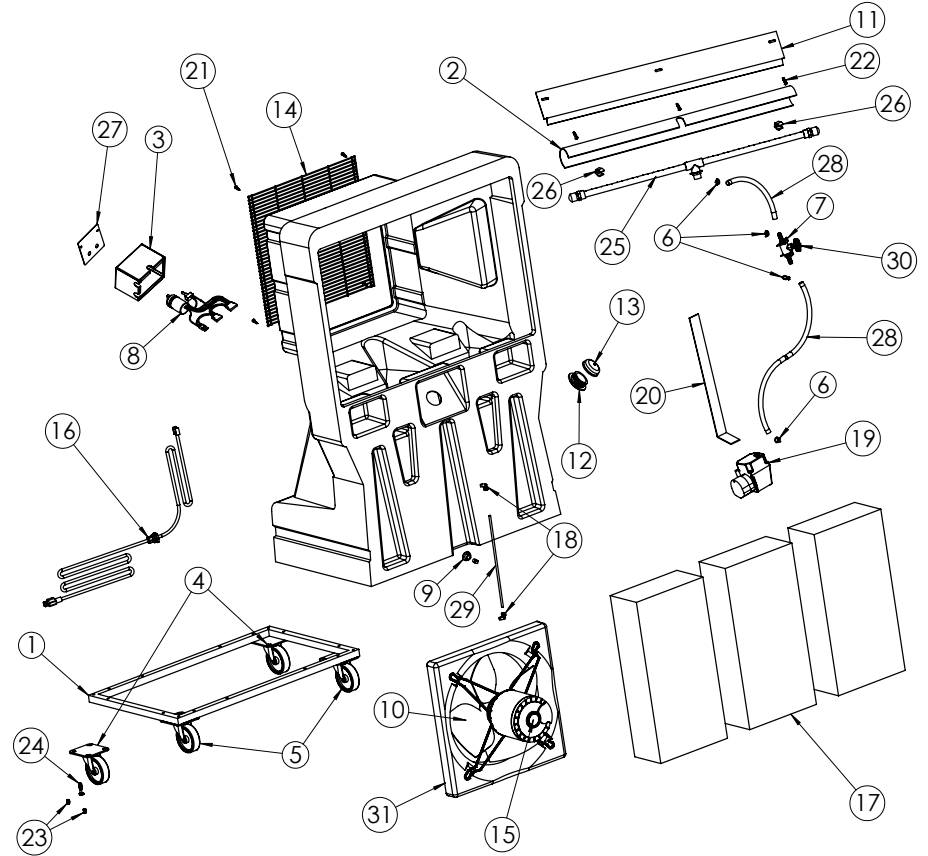


VI. WIRING DIAGRAM for TWO-SPEED MODELS



PAC163SVT ORG. SN#

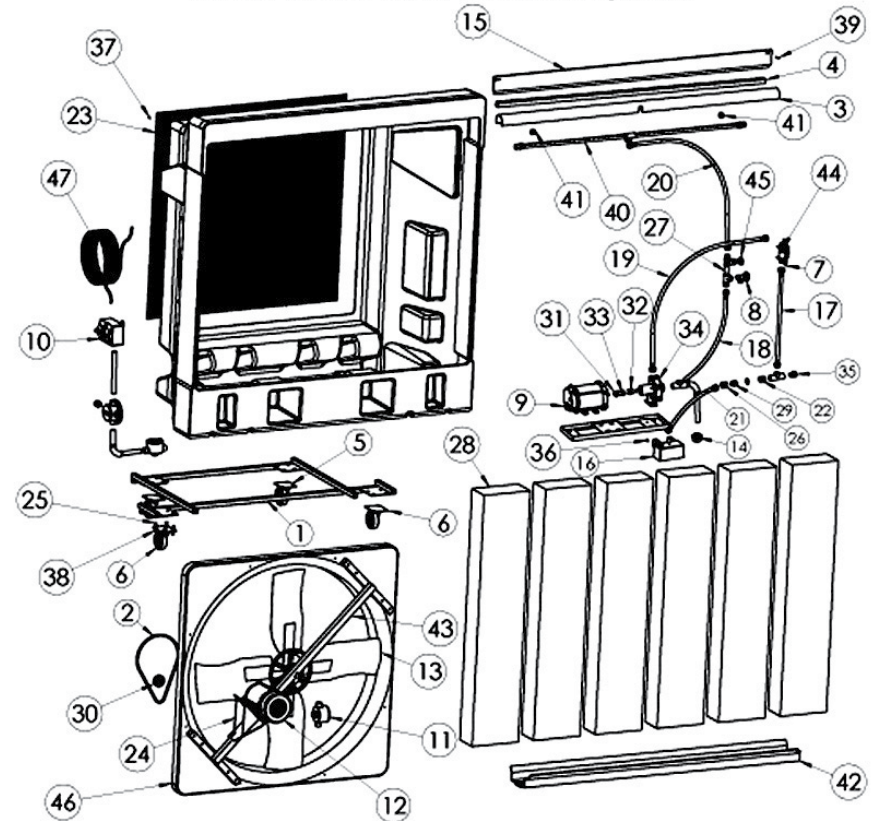
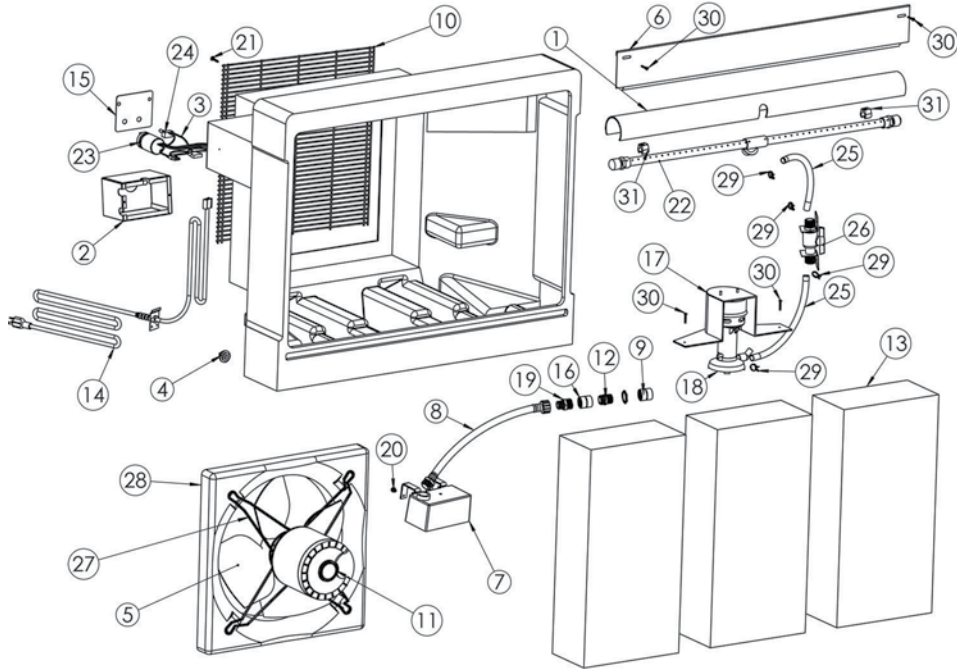
& SUBSEQUENT NEW 09/29,



ITEM#	PART #	DESCRIPTION	ITEM#	PART #	DESCRIPTION
1	BASE-JSVT	CASTER BASE ASSEMBLY FOR JSV/T	17	PAD6024/G	16" PAC REPLACEMENT PAD
2	BONNET-03	SPRAY BAR BONNET FOR 16" PAC	18	POLY-FTG-06	90DEG FITTING FOR SIGHT TUBE
3	BOX-UL-01	3SPD ELECTRICAL BOX	19	PUMP-0140-1	PUMP ASSEMBLY FOR 16" UNIT
4	CASTERS-JS-4	4" JSV/T NON-LOCKING CASTER	20	PUMP-ACC-17	JSV/S PUMP BRACKET
5	CASTERS-JS-4L	4" JSV/T LOCKING CASTER	21	S-006	12-14 BLACK TEC SCREW
6	CLAMP-01	1/2" WIRE SPRING CLAMP	22	S-009	10-24 X 3/4" TRUSS HEAD SCREW
7	CTRL-VLV-BRKT-1	CONTROL VALVE MOUNTING BRACKET	23	S-014	5/16 X 1" TRUSS HEAD SCREW
8	CTRL-3SPD-02	3SPD SWITCH HARNESS	24	S-017	5/16 - 18 X 1.5" TRUSS HEAD SCREW
9	DRAIN-PLUG-01	1/4" NPT PLUG #P-28 FOR 16"UNIT	25	SPRAY-07	SPRAY BAR FOR 16" PAC
10	FAN-ASSM-04	VT 16" BLADE	26	SPRAY-A-CC-04	CLAMP FASTENER FOR SPRAY BAR
11	FLAP-16-01	FRONT FLAP FOR 16" JETSTREAM	27	SWITCHPL-REV3SP	3SPD SWITCH COVER PLATE
12	JS-ACC-01	2" THREADED FILLER CAP RING	28	TUBE01	SOFT PLASTIC TUBE
13	JS-ACC-02	2" THREADED FILLER CAP	29	TUBE03	SIGHT TUBE
14	MESH-PAC-05	FAN GUARD SCREEN FOR 16" UNITS	30	VALVE-01	PUMP TO SPRAYBAR CONTROL VALVE
15	MOTOR-012-04	VT 3SPD MOTOR	31	VENTI6-INJ-01	VENTURI FOR 16" FAN
16	POWERCORD-02	10FT POWER CORD W/DOME STRAIN RELIEF			

Port-A-Cool, LLC 2009

220/50 and 220/60 models require additional parts. Please contact Customer Service at 936-598-5651 for assistance



ITEM#	PART #	DESCRIPTION	ITEM#	PART #	DESCRIPTION
1	BONNET-03	SPRAY BAR BONNET	17	PUMP-BRACKET	PUMP COVER FOR 16" PAC
2	BOX-UL-01	3 SPD ELECTRICAL BOX	18	PUMP-0150-1	PUMP 1/70HP W/NETTING
3	CTRL-3SPD-02	3 SPEED SWITCH SET	19	PVC-ADP-01	3/4 X 1/2 ADAPTER
4	DRAIN-PLUG-01	DRAIN PLUG 16 PAC	20	S-004	1/4-20 X 1/2" BOLT FOR FLOAT
5	FAN-ASSM-04	FAN BLADE	21	S-006	#12 X 1 1/4" TEK SCREW
6	FLAP-16-01	FRONT FLAP FOR 16"	22	SPRAY-07	SPRAY BAR FOR 16" PAC
7	FLOAT-02	FLOAT VALVE	23	SWITCH-ROT-02	3 SPEED ROTOR SWITCH
8	HOSE-FM18	1/2" X 18" F/M HOSE	24	SWITCH-TOG-03	TOGGLE SWITCH FOR 36" PAC
9	HOSE-FTG-07	FEM/FEM 3/4" BRASS SWIVEL	25	TUBE-01	1/2" PLASTIC TUBE (PER FOOT)
10	MESH-PAC-05	FAN SCREEN	26	VALVE-05	1/2" BALL VALVE
11	MOTOR-014-02	16" 3 SPD REPLACEMENT MOTOR	27	VENTURI-MNT-01	N/S H/D MOTOR MOUNT FRAME
12	PAC-PLB-01	BRASS INLET FITTING	28	VENT16-INJ-01	INJECTION MOLDED VENTURI
13	PAD6024/G	PAD FOR 16" UNIT (3 per unit)	29	CLAMP-01	1/2" CLAMP FOR PLASTIC TUBE
14	POWERCORD	12' ELECTRIC CORD	30	S-009	10-24 x 3/4" TRUSS HEAD SCREW
15	PLATE-3SPD-98	SWITCH COVER PLATE (3 SPD)	31	SPRAY-A-CC-04	CLAMP FASTENER 1029
16	PRES-REG-01	WATER PRESSURE REGULATOR			

ITEM#	PART #	DESCRIPTION	ITEM#	PART #	DESCRIPTION
1	BASE-2K48	CASTER BASE ASSM FOR 48" PAC	25	N-516-NYLOK	5/16-18 NYLOK NUT FOR CASTERS
2	BELT2K-45-01	A-45 FAN BELT	26	PAC-PLB-01	BRASS INLET FITTING
3	BONNET-04	48" SPRAY BAR BONNET	27	PAC-PLB-02	PLUMBING ASSEMBLY
4	BRACE-48-03	BONNET BRACE FOR 48" UNIT	28	PAD6060/G	REPLACEMENT PAD (6 per unit)
5	CASTERS-2K-B	8" PNEUMATIC SWIVEL CASTER	29	PRES-REG-01	WATER PRESSURE REGULATOR
6	CASTERS-2K-BL	8" PNEU LOCKING SWIVEL CASTER	30	PULLEY-3.75	3.75 O.D. MOTOR PULLEY
7	CTRL-VALVE-BRKT	CONTROL VALVE MOUNTING BRACKET	31	PUMP-ACC-07	1/2" COUPLING
8	DRAIN-02	3/4" BOILER DRAIN VALVE	32	PUMP-ACC-06	5/8" COUPLING
9	EXP-ACC-04	1725 RPM 1/4 HP 60-HZ PUMP MOTOR	33	PUMP-ACC-09	RUBBER COUPLING
10	EXP-SWITCH-01	DUAL CONTROL SWITCHES	34	PUMP-EXP-01	BRONZE PEDESTAL PUMP
11	FAN-ACC-27	MOTOR CONDUIT BOX	35	PVC-ADP-01	3/4" x 1/2" ADAPTOR
12	FAN-ACC-38	48" HAZARDOUS LOCATION MOTOR	36	S-004	1/4-20 X 1/2" BOLT FOR FLOAT
13	FAN-ASSM-05	BLADE & HUB ASSEMBLY-48"	37	S-008	#12 X 1 1/4" TEK SCREW
14	FILTER-01	SUCTION LINE FILTER	38	S-007	5/16-18 TRUSS HEAD SCREW
15	FLAP-48-01	48" FRONT FLAP	39	S-009	10-24 X 3/4" TRUSS HEAD SCREW
16	FLOAT-02	FLOAT VALVE	40	SPRAY-08	SPRAY BAR FOR 48" PAC
17	HOSE-FF16	1/2" X 16" LONG FEM/FEM HOSE	41	SPRAY-A-CC-04	CLAMP FASTENER 1029
18	HOSE-FF38	3/4" X 38" LONG FEM/FEM HOSE	42	TROUGH-03	PAC TROUGH FOR 48" PAC
19	HOSE-FF50	1/2" X 50" LONG FEM/FEM HOSE	43	UPRIGHTS-48	UPRIGHT FOR 48" PAC
20	HOSE-FF73	3/4" X 73" LONG FEM/FEM HOSE	44	VALVE-05	1/2" BALL VALVE
21	HOSE-FM	1/2" X 24" LONG MALE/FEM HOSE	45	VALVE-09	3/4" GATE VALVE
22	HOSE-FTG-05	FEM/FEM 3/4" BRASS SWIVEL	46	VENTURI-48-01	VENTURI FOR 48" PAC FAN ASSEMBLY
23	MESH-PAC-08	FAN SCREEN	47	WIRE-143-01	POWER CORD 50' LONG
24	MOTOR-MNT-48	MOUNT/36 FOOT MOUNT MOTOR			

220/50 and 220/60 models require additional parts. Please contact Customer Service at 936-598-5651 for assistance

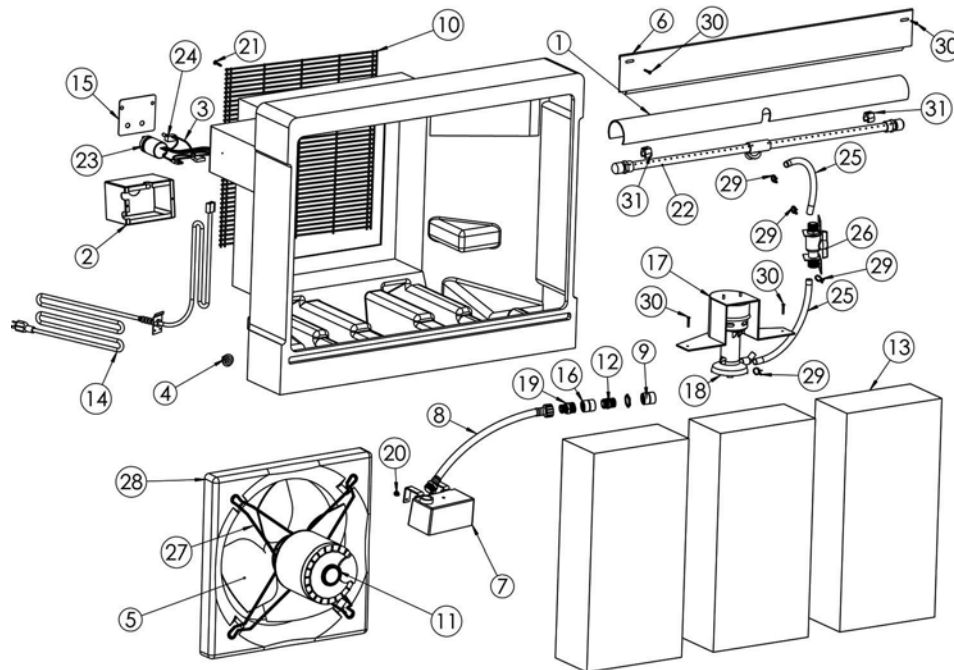
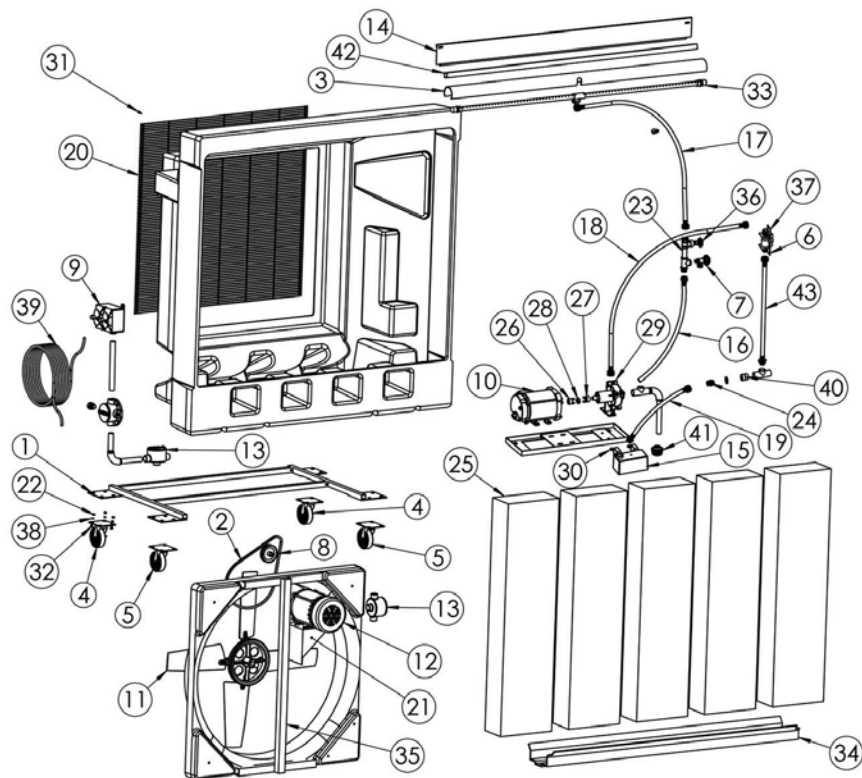
220/50 and 220/60 models require additional parts. Please contact Customer Service at 936-598-5651 for assistance

PAC2K36HZ REV A SN#51979 & SUBSEQUENT

revised 3/22/

PAC2K163SHD ORG. SN# 75964 SUBSEQUENT

revised 04/20/04



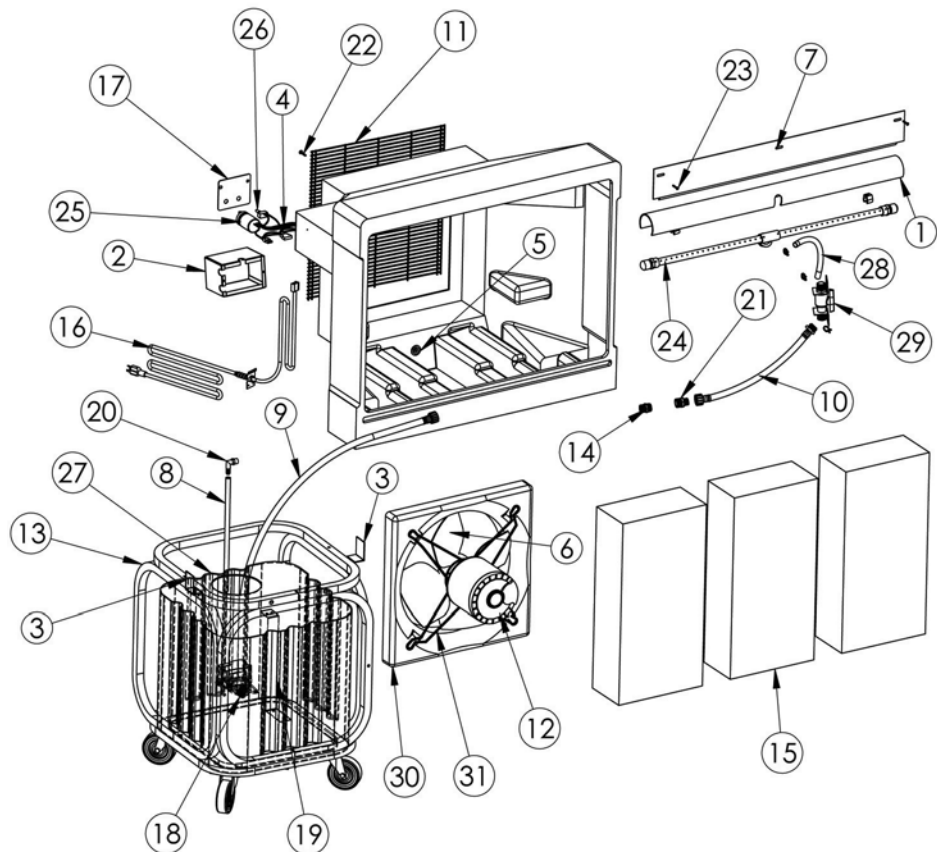
ITEM#	PART #	DESCRIPTION	ITEM#	PART #	DESCRIPTION
1	BASE-2K36	CADDY	23	PAC-PLB	PLUMBING ASSEMBLY
2	BELT2K-48-01	A-48 FAN BELT	24	PAC-PAB-01	BRASS INLET FITTING
3	BONNET-01	SPRAY BAR BONNET	25	PAD6048/G	REPLACEMENT PAD (5per unit)
4	CASTERS-2K	SWIVEL CASTER	26	PUMP-ACC-07	1/2" COUPLING
5	CASTERS-2KL	LOCKING SWIVEL CASTER	27	PUMP-ACC-08	5/8" COUPLING
6	CTRL-VALVE-BRKT	CONTROL VALVE MTG BRKT	28	PUMP-ACC-09	RUBBER COUPLING
7	DRAIN-01	1/2" BOILER DRAIN VALVE	29	PUMP-EXP-01	BRONZE PEDESTAL PUMP
8	PULLEY-3.75	3.75 O.D.PULLEY	30	S-004	1/4-20 X 1/2" BOLT FOR FLOAT
9	EXP-SWITCH-01	DUAL CONTROL SWITCH-01	31	S-006	#12 X 1 1/4" TEK SCREW
10	EXP-ACC-04	1725 RPM 1/4 HP/60HZ PUMP MOTOR	32	S-007	5/16-18 TRUSS HEAD SCREW
11	FAN-ASSM-01	BLADE & HUB ASSEMBLY-36"	33	SPRAY-06	SPRAY BAR FOR 36" PAC
12	FAN-ACC-03	36 HAZARDOUS LOCATION MOTOR	34	TROUGH-01	PAD TROUGH FOR 36" PAC
13	FAN-ACC-04	MOTOR CONDUIT BOX	35	UPRIGHTS-36	UPRIGHT FOR 36" PAC
14	FLAP-36-01	36" FRONT FLAP	36	VALVE-01	1/2" GATE VALVE
15	FLOAT-02	FLOAT VALVE	37	VALVE-05	1/2" BALL VALVE
16	HOSE-FF21	1/2" X 21" LONG FEM/FEM HOSE	38	WASHER-04	5/16" LOCK WASHER/CASTERS
17	HOSE-FF57	1/2" X 57" LONG FEM/FEM HOSE	39	WIRE-14/3-01	POWER CORD 50' LONG
18	HOSE-FF32	1/2" X 32" LONG FEM/FEM HOSE	40	HOSE-FTG-05	FEM/FEM 3/4" BRASS SWIVEL
19	HOSE-FM21	1/2" X 21" LONG MALE/FEM HOSE	41	FILTER-01	SUCTION LINE FILTER
20	MESH-PAC-02	FAN SCREEN	42	BRA-CE-36-02	BONNET BRACE FOR 36" UNIT
21	MOTOR-MNT-36	MOUNT/ 36 FOOT MOUNT MOTOR	43	HOSE-FF15	1/2" X 15" LONG FEM/FEM HOSE
22	N-516-NYLOK	5/16-18 NYLOK NUT FOR CASTERS			

ITEM#	PART #	DESCRIPTION	ITEM#	PART #	DESCRIPTION
1	BONNET-03	SPRAY BAR BONNET	17	PUMP BRACKET	PUMP COVER FOR 16" PAC
2	BOX-UL-01	3 SPD ELECTRICAL BOX	18	PUMP-0150-1	PUMP 1/70HP W/NETTING
3	CTRL-3SPD-01	3 SPEED SWITCH SET	19	PVC-ADR-01	3/4 X 1/2 ADAPTER
4	DRAIN-PLUG-01	DRAIN PLUG 16 PAC	20	S-004	1/4-20 X 1/2" BOLT FOR FLOAT
5	FAN-ASSM-04	FAN BLADE	21	S-006	#12 X 1 1/4" TEK SCREW
6	FLAP-16-01	FRONT FLAP FOR 16"	22	SPRAY-07	SPRAY BAR FOR 16" PAC
7	FLOAT-02	FLOAT VALVE	23	SWITCH-ROT-02	3 SPEED ROTOR SWITCH
8	HOSE-FM18	1/2" X 18" F/M HOSE	24	SWITCH-TOG-03	TOGGLE SWITCH FOR 36" PAC
9	HOSE-FTG-05	FEM/FEM 3/4" BRASS SWIVEL	25	TUBE-01	1/2" PLASTIC TUBE (PER FOOT)
10	MESH-PAC-05	FAN SCREEN	26	VALVE-05	1/2" BALL VALVE
11	MOTOR-012-04	16" 3 SPD PSC MOTOR	27	VENTURI-MNT-01	N/S H/D MOTOR MOUNT FRAME
12	PAC-PLB-01	BRASS INLET FITTING	28	VENT16-INJ-01	INJECTION MOLDED VENTURI
13	PAD6024/G	PAD FOR 16" UNIT (3 per unit)	29	CLAMP-01	1/2" CLAMP FOR PLASTIC TUBE
14	PGTAIL-12	12' ELECTRIC CORD	30	S-009	10-24 x 3/4" TRUSS HEAD SCREW
15	PLATE-REV-SPD	321 PSC MOTOR SWITCH PLATE	31	SPRAY-ACC-04	CLAMP FASTENER 1029
16	PRES-REG-01	WATER PRESSURE REGULATOR			

220/50 and 220/60 models require additional parts. Please contact Customer Service at 936-598-5651 for assistance

220/50 and 220/60 models require additional parts. Please contact Customer Service at 936-598-5651 for assistance

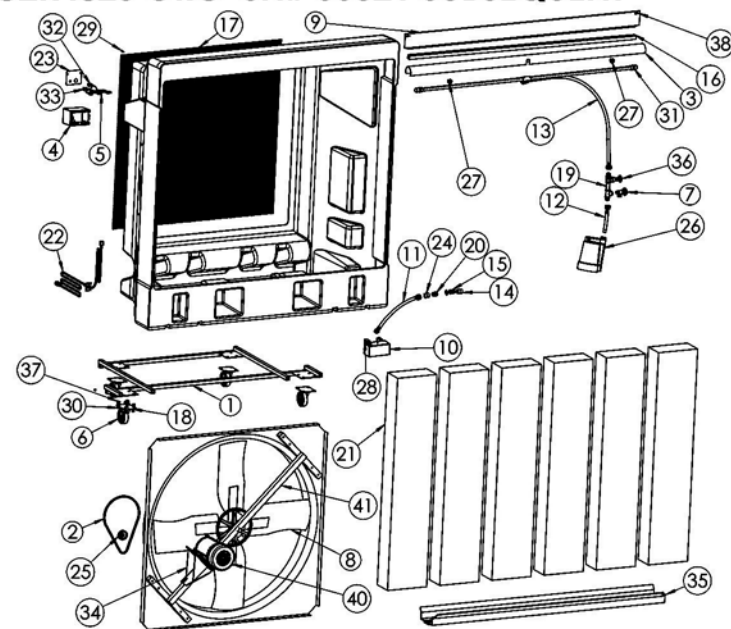
PAC2K163SFC ORG. SN# 76229 & SUBSEQUENT New 04/08/04



ITEM#	PART #	DESCRIPTION	ITEM#	PART #	DESCRIPTION
1	BONNET-03	SPRAY BAR BONNET	17	PLATE-REV-SPD	3,2,1,PSC MOTOR SWITCH PLATE
2	BOX-UL-01	3 SPD ELECTRICAL BOX	18	PUMP-0140-1	1/40 HP PUMP
3	BRACKET-01	STABILIZER BRACKET	19	PUMP-ACC-14	PUMP BRACKET FOR 1/40HP PUMP
4	CTRL-3SPD-01	3 SPEED SWITCH SET	20	PVC-ADP.75-03	3/4" 90 DEG. MALE TO BARB ADAPTER
5	DRUM-ACC-01	3/4" SPIN FITTING	21	PVC-ADP-01	3/4 X 1/2 REDUCING ADAPTER
6	FAN-ASSM-04	FAN BLADE	22	S-006	#12 X 1 1/4" TEK SCREW
7	FLAP-16-01	FRONT FLAP FOR 16"	23	S-009	10-24 X 3/4" TRUSS HEAD SCREW
8	HOSE-02	3/4" DRAIN HOSE 24" LONG	24	SPRAY-07	SPRAY BAR FOR 16" PAC
9	HOSE-F50	1/2" X 50" HOSE TO TANK PUMP UNIT	25	SWITCH-ROT-02	3 SPEED ROTOR SWITCH
10	HOSE-FF	1/2" X 24" F/F HOSE INLET TO ADJ. VALVE	26	SWITCH-TOG-03	METAL TOGGLE SWITCH FOR 16" PAC
11	MESH-PAC-05	FAN SCREEN	27	TANK-16-01	22 GALLON TANK
12	MOTOR-012-04	1/2 HP 3 SPD PSC MOTOR	28	TUBE-01	1/2" CLEAR PLASTIC TUBE (PER FOOT)
13	PAC-ACC-30	16" PAC UNIT STAND	29	VALVE-05	1/2" BALL VALVE
14	PAC-PLB-01	BRASS INLET FITTING	30	VENT16-INJ-01	INJECTION MOLDED VENTURI
15	PAD024/G	REPLACEMENT PAD FOR 16" (3 PER UNIT)	31	VENTURI-MNT-01	N/S HEAVY-DUTY MOTOR MOUNT FRAME
16	PGTAIL-12	12" ELECTRICAL CORD			

220/50 and 220/60 models require additional parts. Please contact Customer Service at 936-598-5651 for assistance

PAC2K482S ORG SN# 66321 SUBSEQUENT

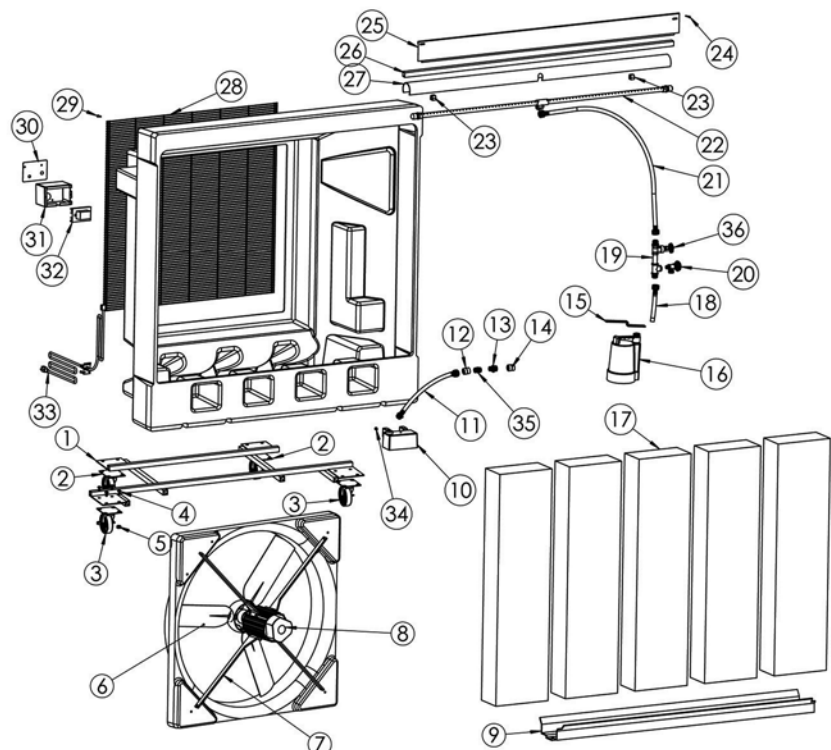


ITEM#	PART #	DESCRIPTION	ITEM#	PART #	DESCRIPTION
1	BASE-2K48	CADDY	21	PAD060/G	PAD FOR 48" PAC (6 per unit)
2	BELT2K-45-01	A-45 FAN BELT	22	PGTAIL-12	12" ELECTRICAL CORD
3	BONNET-04	SPRAY BAR BONNET	23	PLATE-2SPD-96	SWITCH PLATE 2 SPD
4	BOX-UL-02	2 SPD ELECTRICAL BOX	24	FRES-REG-01	WATER PRESSURE REGULATOR
5	CTRL-2SPD-01	2 SPEED SWITCH SET	25	PULLEY-48-02	AK34 PULLEY
6	CASTER-KIT-02	8" CASTERS SET OF FOUR	26	PUMP-016-4R	L/G 1/6HP SUBMERSIBLE PUMP
7	DRAIN-01	1/2" BOILER DRAIN VALVE	27	SPRAY-ACC-04	CLAMP FASTENER 1029
8	FAN-ASSM-05	FAN BLADE ASSEMBLY FOR 48" UNIT	28	S-004	1/4-20 X 1/2" BOLT FOR FLOAT
9	FLAP-48-01	FRONT FLAP FOR 48" PAC	29	S-006	#12 X 1 1/4" TEK SCREW
10	FLOAT-02	FLOAT VALVE	30	S-007	5/16-18 TRUSS HEAD SCREW FOR CASTERS
11	HOSE-FM	1/2" X 2' MALE/FEM HOSE INLET TO FLOAT	31	SPRAY-08	SPRAY BAR FOR 48" PAC
12	HOSE-FF3	1/2" X 3' FEM/FEM HOSE PLB TO PUMP	32	SWITCH-TOG-03	TOGGLE SWITCH FOR 48" PAC
13	HOSE-FF6	1/2" X 6' FEM/FEM HOSE SPRAY BAR TO PLB	33	SWITCH-TOG-02	2 SPEED TOGGLE SWITCH
14	HOSE-FTG-05	FEM/FEM 3/4" BRASS SWIVEL	34	MOTOR-MNT-48	MOTOR MOUNT FOR 48" UNIT
15	PVC-ADP-01	3/4" X 1/2" ADAPTER	35	TROUGH-03	PAD TROUGH FOR 48" PAC
16	BRACE-48-03	BRACE FOR BONNET	36	VALVE-01	1/2" GATE VALVE
17	MESH-PAC-06	FAN SCREEN	37	WASHER-04	5/16" LOCK WASHER/CASTERS
18	N-516-NYLOK	5/16-18 NYLOK NUT FOR CASTERS	38	S-009	10-24 X 3/4" TRUSS HEAD SCREW
19	PAC-PLB-02	BLACK PLUMBING ASSEMBLY	39	S-013	#10 X 3/8" WASHER HEAD SCREW
20	PAC-PLB-01	BRASS INLET FITTING	40	MOTOR-010-01	1HP/2SPD MOTOR FOR 48" UNIT
			41	UPRIGHTS-48	UPRIGHT FOR 48" UNIT

220/50 and 220/60 models require additional parts. Please contact Customer Service at 936-598-5651 for assistance

PAC2K36HPVS REV.A SN# 66120 SUBSEQUENT

revised 02/11/04

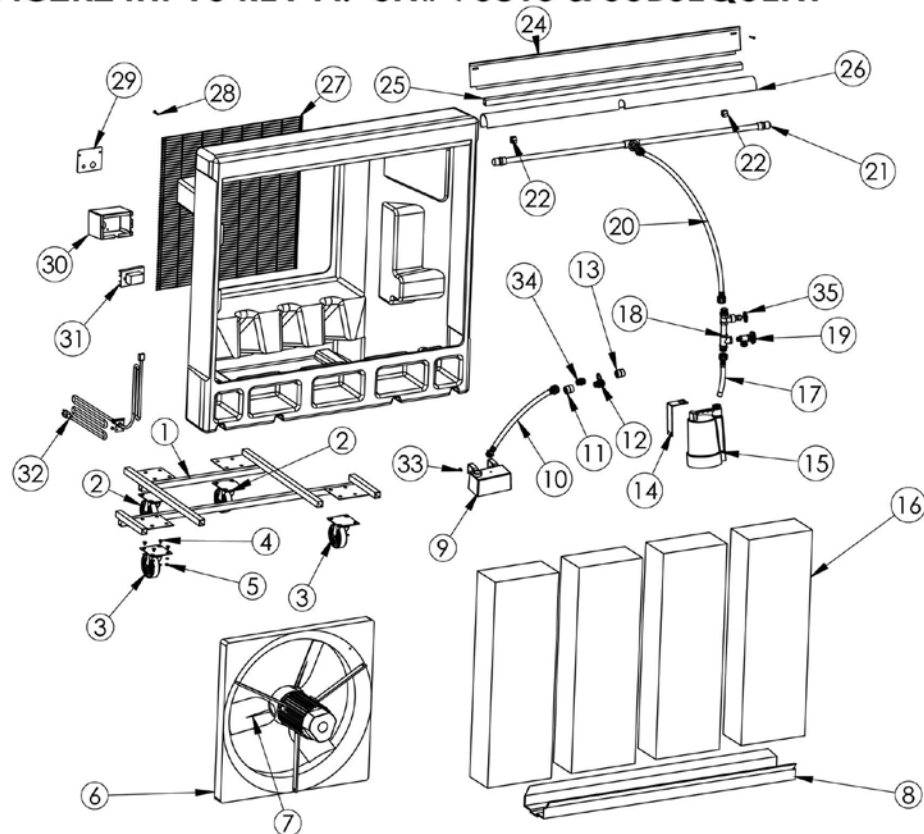


ITEM #	PART #	DESCRIPTION	ITEM #	PART #	DESCRIPTION
1	BASE-2K36	CADDY	19	PAC-PLB-02	BLACK PLUMBING ASSEMBLY
2	CASTER-2K	SWIVEL CASTER	20	DRAIN-01	1/2" BOILER DRAIN
3	CASTER-2K-L	LOCKING SWIVEL CASTER	21	HOSE-FF57	FEM/FEM HOSE 57" LONG
4	S-007	5/16-18 TRUSS HEAD SCREW	22	SPRAY-06	SPRAY BAR FOR 36" PAC
5	N-516-NYLOK	5/16-18 NYLOK NUT	23	SPRAY-ACC-04	CLAMP FASTENER 1029
6	BLADE-ASSM-01	VOSTERMAN 36" FAN BLADE ASSEMBLY	24	S-009	10-24 X 3/4" TRUSS HEAD SCREW
7	FAN36HP-MNT-01	PI-CO 3VP1006 MOTOR SUPPORT ARM-36" PAC	25	FLAP-36-01	FRONT FLAP FOR 36" PAC
8	MOTOR-012-05	1/2 HP DIRECT DRVE VOSTERMAN MOTOR	26	BRACE-36-02	BONNET BRACE
9	TROUGH-01	PAD TROUGH FOR 36" PAC	27	BONNET-01	SPRAY BAR BONNET FOR 36" PAC
10	FLOAT-02	FLOAT VALVE	28	MESH-PAC-02	FAN SCREEN FOR 36" PAC
11	HOSE-FM30	FEMMALE HOSE 30" LONG	29	S-006	#12 X 1 1/4" TEK SCREW
12	PRES-REG-01	WATER PRESSURE REGULATOR	30	PLATE-VARSPPD-98	SWITCH PLATE FOR HP UNIT
13	PAC-PLB-01	BRASS INLET FITTING	31	BOX-UL-03	ELECTRICAL BOX
14	HOSE-FTG-05	FEM/FEM 3/4" BRASS SWIVEL	32	CTRL-VARSPEED	VARIABLE SPEED CONTROL SWITCH
15	PUMP-ACC-13	PUMP BRACKET- 1/6 HP PUMP	33	PIGTAIL-12	12" ELECTRICAL CORD
16	PUMP-016-4R	SUBMERSIBLE 1/6 HP PUMP	34	S-004	1/4-20 X 1/2" BOLT FOR FLOAT
17	PAD6048/G	PAD FOR 36" PAC (5 per unit)	35	PVC-ADP-01	3/4" X 1/2" REDUCING ADAPTER
18	HOSE-FF	FEM/FEM HOSE 24" LONG	36	VALVE-01	1/2" GATE VALVE

220/50 and 220/60 models require additional parts. Please contact Customer Service at 936-598-5651 for assistance

PAC2K24HPVS REV A. SN# 75815 & SUBSEQUENT

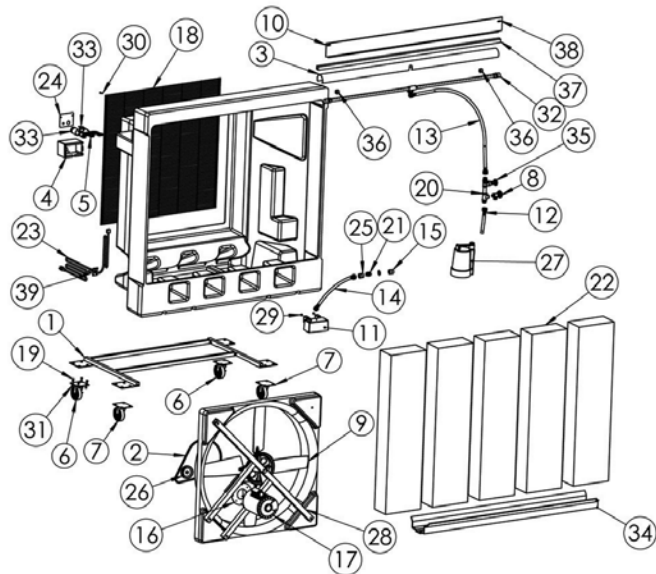
revised 04/19/04



ITEM #	PART #	DESCRIPTION	ITEM #	PART #	DESCRIPTION
1	BASE-2K24	CADDY	19	DRAIN-01	1/2" BOILER DRAIN
2	CASTER-2K	SWIVEL CASTER	20	HOSE-FF35	FEM/FEM 35" HOSE PLB TOSPRAYBAR
3	CASTER-2K-L	LOCKING SWIVEL CASTER	21	SPRAY-04	SPRAY BAR FOR 24" PAC
4	S-007	5/16-18 TRUSS HEAD SCREW	22	SPRAY-ACC-04	CLAMP FASTENER 1029
5	N-516-NYLOK	5/16-18 NYLOK NUT	23	S-009	10-24 X 3/4" TRUSS HEAD SCREW
6	BLADE-ASSM-02	VOSTERMAN 24" FAN BLADE ASSY. (33deg.)	24	FLAP-24-01	FRONT FLAP FOR 24" PAC
7	MOTOR-012-06	1/3 HP DIRECT DRIVE VOSTERMAN MOTOR	25	BRACE-24-01	BONNET BRACE
8	TROUGH-02	PAD TROUGH FOR 24" PAC	26	BONNET-02	SPRAY BAR BONNET FOR 24" PAC
9	FLOAT-02	FLOAT VALVE	27	MESH-PAC-01	FAN SCREEN FOR 24" PAC
10	HOSE-FM20	FEMMALE HOSE 20" LONG INLET TO FLOAT	28	S-006	#12 X 1 1/4" TEK SCREW
11	PRES-REG-01	WATER PRESSURE REGULATOR	29	PLATE-VARSPPD-98	SWITCH PLATE FOR HP UNIT
12	PAC-PLB-01	BRASS INLET FITTING	30	BOX-UL-03	ELECTRICAL BOX
13	HOSE-FTG-05	FEM/FEM 3/4" BRASS SWIVEL	31	CTRL-VARSPPD-02	VARIABLE SPEED CONTROL SWITCH
14	PUMP-ACC-15	PUMP BRACKET- 1/6 HP PUMP 24" PAC	32	PIGTAIL-12	12" ELECTRICAL CORD
15	PUMP-016-4R	SUBMERSIBLE 1/6 HP PUMP	33	S-004	1/4-20 X 1/2" BOLT FOR FLOAT
16	PAD6036/G	PAD FOR 24" PAC (4 per unit)	34	PVC-ADP-01	3/4" X 1/2" REDUCING ADAPTER
17	HOSE-FF30	FEM/FEM HOSE 30" LONG PUMP TO PLB.	35	VALVE-01	1/2" GATE VALVE
18	PAC-PLB-02	BLACK PLUMBING ASSEMBLY			

220/50 and 220/60 models require additional parts. Please contact Customer Service at 936-598-5651 for assistance

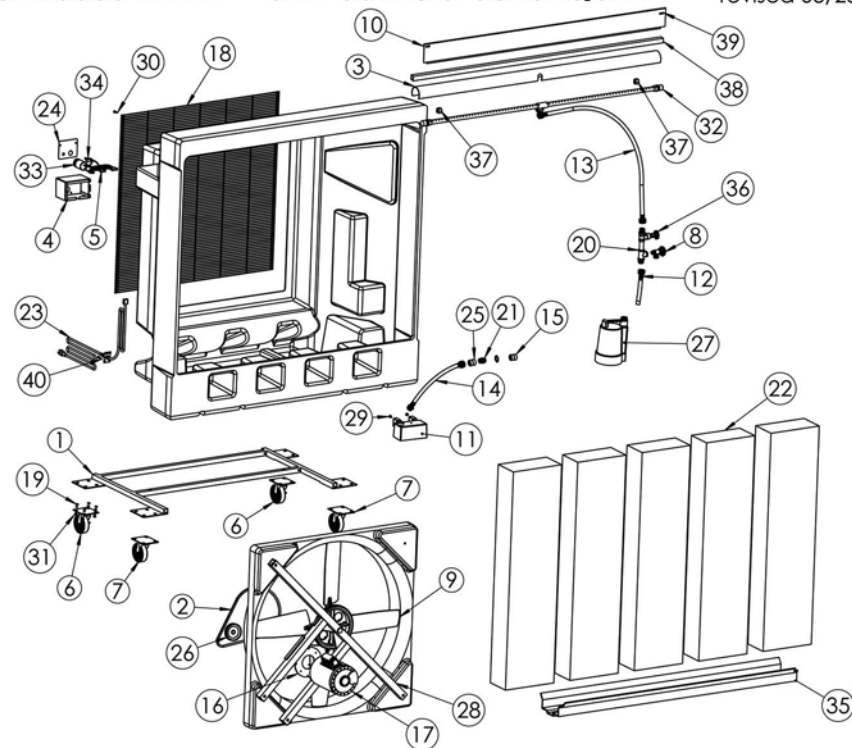
PAC2K361S REV. I SN# 76066 & SUBSEQUENT



ITEM#	PART #	DESCRIPTION	ITEM#	PART #	DESCRIPTION
1	BASE-2K36	CADDY	24	PLATE-1SPD-98	SWITCH PLATE 1 SPD
2	BELT2K-38-01	A-38 FAN BELT	25	PRES-REG-01	WATER PRESSURE REGULATOR
3	BONNET-01	SPRAY BAR BONNET	26	PULLEY-3.75	3.75 O.D. PULLEY
4	BOX-UL-02	1 SPD ELECTRICAL BOX	27	PUMP-016-4R	1/6 HP SUBMERSIBLE PUMP FOR 36" PAC
5	CTRL-1SPD-01	1 SPEED SWITCH SET	28	RTM-PULTR36-01	36" RTM PULTRUSION ASSEMBLY
6	CASTERS-2K	SWIVEL CASTER	29	S-004	1/4-20 X 1/2" BOLT FOR FLOAT
7	CASTERS-2K-L	LOCKING SWIVEL CASTER	30	S-006	#12 X 1 1/4" TBK SCREW
8	DRAIN-01	1/2" BOILER DRAIN VALVE	31	S-007	5/16-18 TRUSS HEAD SCREW
9	FAN-ASSM-01	PLASTIC BLADE & HUB ASSEMBLY	32	SPRAY-06	SPRAY BAR FOR 36" PAC
10	FLAP-36-01	FRONT FLAP FOR 36"	33	SWITCH-TOG-03	TOGGLE SWITCH FOR 36" PAC
11	FLOAT-02	FLOAT VALVE	34	TROUGH-01	PAD TROUGH FOR 36" PAC
12	HOSE-FF	1/2" X 24" FEM/FEM HOSE PLB TO PUMP	35	VALVE-01	1/2" GATE VALVE
13	HOSE-FF57	1/2" X 57" FEM/FEM HOSE SPRAY BAR TO PLB	36	SPRAY-ACC-04	CLAMP FASTENER 1029
14	HOSE-FM80	1/2" X 30" MALE/FEM HOSE INLET TO FLOAT	37	BRACE-36-02	BONNET BRACE
15	HOSE-FTG-05	FEM/FEM 3/4" BRASS SWIVEL	38	S-009	10-24 X 3/4" TRUSS HEAD SCREW
16	MOTOR-MNT-01	MOUNT FOR 36" MOTOR	39	S-013	#10 X 3/8" WASHER HEAD SCREW
17	MOTOR-012-01STA	1 SPD MOTOR W/63" HARNESS (PRCD. W/9K922B)			
18	MESH-PAC-02	FAN SCREEN			
19	N-516-NYLOK	5/16" NYLOCK NUT FOR CASTERS			
20	PAC-PLB-02	BLACK PLUMBING ASSEMBLY			
21	PAC-FLB-01	BRASS INLET FITTING			
22	PAD6048/G	PAD FOR 36" PAC (5 per unit)			
23	PGTAIL-12	12" ELECTRICAL CORD			

220/50 and 220/60 models require additional parts. Please contact Customer Service at 936-598-5651 for assistance

PAC2K363S REV. F SN# 66120 & SUBSEQUENT



ITEM#	PART #	DESCRIPTION	ITEM#	PART #	DESCRIPTION
1	BASE-2K36	CADDY	21	PAC-FLB-01	BRASS INLET FITTING
2	BELT2K-38-01	A-38 FAN BELT	22	PAD6048/G	PAD FOR 36" PAC (5 per unit)
3	BONNET-01	SPRAY BAR BONNET	23	PGTAIL-12	12" ELECTRICAL CORD
4	BOX-UL-01	3 SPD ELECTRICAL BOX	24	PLATE-3SPD-98	SWITCH PLATE 3 SPD
5	CTRL-3SPD-01	3 SPEED SWITCH SET	25	PRES-REG-01	WATER PRESSURE REGULATOR
6	CASTERS-2K	SWIVEL CASTER	26	PULLEY-3.75	3.75 O.D. PULLEY
7	CASTERS-2K-L	LOCKING SWIVEL CASTER	27	PUMP-016-4R	1/6 HP SUBMERSIBLE PUMP FOR 36" PAC
8	DRAIN-01	1/2" BOILER DRAIN VALVE	28	RTM-PULTR36-01	36" RTM PULTRUSION ASSEMBLY
9	FAN-ASSM-01	PLASTIC BLADE & HUB ASSEMBLY	29	S-004	1/4-20 X 1/2" BOLT FOR FLOAT
10	FLAP-36-01	FRONT FLAP FOR 36"	30	S-006	#12 X 1 1/4" TBK SCREW
11	FLOAT-02	FLOAT VALVE	31	S-007	5/16-18 TRUSS HEAD SCREW
12	HOSE-FF	1/2" X 24" FEM/FEM HOSE PLB TO PUMP	32	SPRAY-06	SPRAY BAR FOR 36" PAC
13	HOSE-FF57	1/2" X 57" FEM/FEM HOSE SPRAY BAR TO PLB	33	SWITCH-TOG-03	TOGGLE SWITCH FOR 36" PAC
14	HOSE-FM80	1/2" X 30" MALE/FEM HOSE INLET TO FLOAT	34	SWITCH-ROT-02	3 SPEED ROTOR SWITCH
15	HOSE-FTG-05	FEM/FEM 3/4" BRASS SWIVEL	35	TROUGH-01	PAD TROUGH FOR 36" PAC
16	MOTOR-MNT-01	MOUNT FOR 36" MOTOR	36	VALVE-01	1/2" GATE VALVE
17	MOTOR-012-02STA	3 SPD MOTOR W/63" HARNESS	37	SPRAY-ACC-04	CLAMP FASTENER 1029
18	MESH-PAC-02	FAN SCREEN	38	BRACE-36-02	BONNET BRACE
19	N-516-NYLOK	5/16" NYLOCK NUT FOR CASTERS	39	S-009	10-24 X 3/4" TRUSS HEAD SCREW
20	PAC-PLB-02	BLACK PLUMBING ASSEMBLY	40	S-013	#10 X 3/8" WASHER HEAD SCREW

220/50 and 220/60 models require additional parts. Please contact Customer Service at 936-598-5651 for assistance