



AIRMAN[®]

MOBILE GENERATORS



2022
FULL-LINE
BROCHURE

ANACORP.COM

ONLY



HAS THE INDUSTRY'S

PRIME POWER RATED & READY

AIRMAN® has been manufacturing the highest-quality mobile generators since 1971 and is a staple among rental companies, power generation specialists and construction contractors alike. With prime power models ranging from 13 kVA to 400 kVA, AIRMAN has a generator to meet your power demands.

All S-Series AIRMAN generators feature 24-hour runtime fuel tanks and include auxiliary fuel tank connections for extended runtimes. AIRMAN generators include the industry's best automatic voltage regulation ($\pm 0.5\%$) with the widest range of voltage selection and best-in-class motor starting capability.

Run with the best. *Run with AIRMAN.*

SDG13LAX-8E1

**13
kVA**

Kubota®
D1503



SDG25S-8E1

**25
kVA**

Isuzu®
4LE2T



SDG40S-8E1

**36
kVA**

Kubota®
V2403



SDG45S-8E2

**45
kVA**

Isuzu®
4LE2X



SDG65S-8E1

**65
kVA**

Isuzu®
4JJ1X



SDG125S-8E1

**125
kVA**

Isuzu®
4HK1X



SDG150S-8E1

**150
kVA**

John
Deere®
6068



SDG220S-8E1

**220
kVA**

John
Deere®
6068



SDG400S-8E1

**400
kVA**

Isuzu®
6WG1X



SMARTTEST DIESEL GENERATORS

AUTOMATIC LOAD OPTIMIZATION

SmartLoad™ technology from ANA automatically optimizes the load on the generator for maximum operating efficiency and reliability.

The SmartLoad system monitors electrical loads off of the generator and automatically engages if the load is 30% or less. The SmartLoad system adds 33-40% load to the generator (Up to 75% max.) and will instantaneously shut off when a load inrush is detected or 75% load is exceeded.

Maintain power reliability, reduce maintenance and prevent wet stacking with the SmartLoad fully automatic load bank system from ANA.

SMARTLOAD™
LOAD BANK SYSTEM

— PATENT PENDING —

**FOR ANA
AIRMAN®
GENERATORS
25-400 kVA**

**SMARTLOAD™ LOAD BANK SYSTEM PREVENTS DOWNTIME,
COSTLY MAINTENANCE AND THESE TIER 4 ENGINE ISSUES:**



**WET
STACKING**



**NUISANCE
SHUTDOWNS**



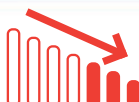
**RE-GEN
LOCKOUT**



**ON-SITE
LOAD
BANKING**



**ENGINE
DAMAGE**

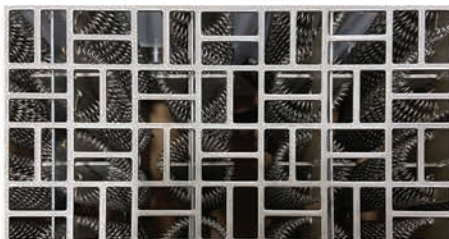


**LIGHT
LOADING**



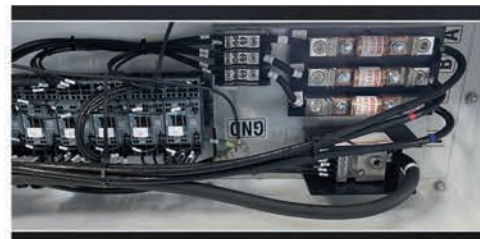
Vertical Air Discharge

The SmartLoad System can be inside the discharge chamber (25, 220 & 400), or over the air discharge scoop, to maintain vertical airflow. The weathertight enclosure has sealed electrical connections and uses stainless steel hardware.



Heavy-duty Resistor Coils

Mobile generators require maximum durability for the most demanding work environments. The SmartLoad system uses spiral coils over resistors with mica thermal insulators for very low heat output and unmatched durability.



Automatic Phase & Voltage Sensing

The SmartLoad system features an integral control box with fused power connections. The load bank is designed to automatically sense both single-phase to three-phase power and a variety of voltages from 120V to 480V.

PROMOTES: DOWN RENTING // INCREASED UTILIZATION // FASTER RENT READINESS

S HIGHEST-QUALITY MOBILE GENERATOR

AIRMAN® VALUE-ADDED FEATURES

3-Position Voltage Selector Switch, Lockable



Shown equipped with optional
SMARTLOAD™
LOAD BANK SYSTEM

Stainless Steel Hardware and Lift-off Hinges

Automotive Door Seals

QuieTech™ Sound Attenuation

Delta Demand Excitation™ Technology

Service Extensions

110% Fluid Containment Fuel • Oil • Coolant



DSE Genset® Control Panel

Each AIRMAN generator features an intuitive DSE control panel for simplified operation.

The Auto Start digital control includes configurable inputs and outputs, audible alarms, engine status and shutdown information, a fuel usage monitor, back-lit LCD screen and many other user-friendly features.

External Drains

Large Electrical Lugs

Internal Fuel Tank

Curbside Electrical Panel

Powder-Coated Steel Enclosure



DSE Genset® Control Panel

Lockable Access Doors

Built-in Service Ladder (Select Models)

External Emergency Stop Button

Heavy-Duty Steel Trailer



Best-in-Class dBA Rating

24-Hour Runtime



▶ SEE THESE INDUSTRY-BEST GENSET FEATURES

WATCH AIRMAN® PRODUCT VIDEOS ONLINE

GENERATORS RUN WITH AIRMAN®

WORLD-CLASS SUPPORT

ANA manufactures and sells the industry's highest-quality equipment and provides complete sales and support for AIRMAN and Hokuetsu OEM products.

ANA service professionals are ready to keep your fleet in top condition with 24/7 on call technical support, parts processing, warranty assistance and product training. ANA's online knowledge base includes an extensive library of AIRMAN technical documents and access to SmartEquip® – the premier fleet support platform for parts and service information.



OPTIONAL ACCESSORIES

ANA stocks a wide variety of genuine AIRMAN generator parts and model-specific accessories.

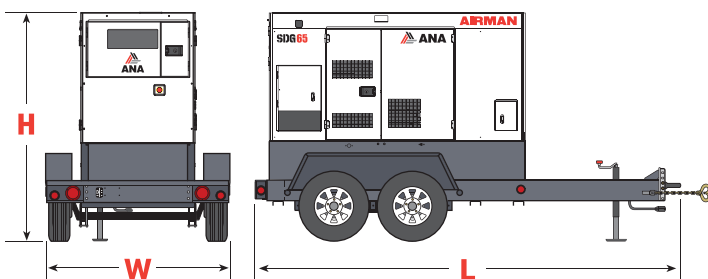
SMARTLOAD™ LOAD BANK SYSTEM

- Cam-Loks™
- Battery Charger
- Lockable Battery Disconnect
- Battery Blanket
- Engine Block Heater
- Lower Radiator Heater

- Fuel Filter Heater
- Paralleling (SDG125, 150, 220 & 400)
- 4-Position Voltage Selector with 120/240V 3-Phase Delta
- Extended Run Fuel Tank
- Auto Start Option on SDG13LAX
- 5-Year/7,000-Hr. Extended Warranty
- CSA Certification 🍁
- 600V



TRAILER DIMENSIONS



GENERATOR MODEL	LENGTH (L)	WIDTH (W)	HEIGHT (H)
SDG13LAX-8E1	120"	60"	60"
SDG25S-8E1	119"	54"	62"
SDG40S-8E1	144"	70"	73"
SDG45S-8E2	144"	70"	73"
SDG65S-8E1	160"	74"	84.25"
SDG125S-8E1	194"	83.75"	89"
SDG150S-8E1	211"	83.75"	100.6"
SDG220S-8E1	219"	83.75"	103.4"
SDG400S-8E1	270"	92"	127"

All dimensions for standard equipment only. All specifications are subject to change without prior notice.

COMPLETE PRODUCT SUPPORT FROM ANA

AIRMAN[®] SPECIFICATIONS

GENERATOR SPECIFICATIONS	SDG13LAX-8E1	SDG25S-8E1	SDG40S-8E1	SDG45S-8E2	SDG65S-8E1	SDG125S-8E1	SDG150S-8E1	SDG220S-8E1	SDG400S-8E1	
ALTERNATOR TYPE	AIRMAN						TAIYO	STAMFORD	TAIYO	
ARMATURE CONNECTION	Star with Neutral / Zi q Za q									
NUMBER OF POLES	4-Pole									
INSULATION	Class F									
EXCITATION	Brushless with AVR									
VOLTAGE REGULATOR	± 0.5%									
POWER FACTOR	0.8									
FREQUENCY	60 Hz									
PRIME POWER	12.5 kVA / 10 kW	25 kVA / 20 kW	36 kVA / 28.8 kW	45 kVA / 36 kW	65 kVA / 51 kW	125 kVA / 100 kW	150 kVA / 120 kW	220 kVA / 176 kW	400 kVA / 320 kW	
STANDBY POWER	13.8 kVA / 11 kW	27.5 kVA / 22 kW	37.8 kVA / 30.2 kW	48.5 kVA / 38.8 kW	69.3 kVA / 55.4 kW	137.5 kVA / 110 kW	165 kVA / 132 kW	242 kVA / 194 kW	420 kVA / 336 kW	
VOLTAGE (SINGLE-PHASE)	120V / 240V (Simultaneous)	120V / 240V / 277V (Switchable)						120V / 127V / 139V / 240V / 254V / 277V (Link Board)		
VOLTAGE (THREE-PHASE)	208V / 240V (Simultaneous)	208V / 240V / 416V / 480V (Switchable)						208V / 220V / 240V / 416V / 440V / 480V (Link Board)		
AMPERAGE										
SINGLE-PHASE (120V)	40 A x 2	60 A x 2	108 A x 2	108 A x 2	152 A x 2	300 A x 2	363 A x 2	491 A x 2	893 A x 2	
SINGLE-PHASE (240V)	40 A	60 A	108 A	108 A	152 A	300 A	363 A	491 A	893 A	
THREE-PHASE (208V)	30 A	65 A	95 A	119 A	167 A	328 A	394 A	608 A	1048 A	
THREE-PHASE (240V)	30 A	60 A	86 A	108 A	152 A	300 A	361 A	529 A	962 A	
THREE-PHASE (480V)	N/A	30 A	43 A	54 A	76 A	150 A	180 A	264 A	481 A	
ENGINE SPECIFICATIONS										
ENGINE	Kubota D1503	Isuzu 4LE2T	Kubota V2403-CR-T	Isuzu 4LE2X	Isuzu 4JJ1X	Isuzu BR-4HK1X	J. Deere 6068HFG05	J. Deere 6068HFG06	Isuzu 6WG1X	
EPA EMISSION LEVEL	Tier 4 Final									
DIESEL ENGINE TYPE / CYLINDERS	4-cycle, liquid-cooled direct injection / 3	4-cycle, liquid-cooled direct injection turbocharged / 4	4-cycle, liquid-cooled direct injection turbocharged air-to-air intercooled / 4	4-cycle, liquid-cooled direct injection turbocharged / 4	4-cycle, liquid-cooled direct injection turbocharged in tercooled / 4	4-cycle, liquid-cooled direct injection turbocharged air-to-air intercooled / 4	4-cycle, liquid-cooled direct injection turbocharged in tercooled / 6	4-cycle, liquid-cooled direct injection turbocharged air-to-air intercooled / 6	6-cycle, liquid-cooled direct injection turbocharged in tercooled / 6	
OUTPUT @ RATED SPEED (1800 rpm)	18.4 HP	33.3 HP	44.9 HP	57.7 HP	86.5 HP	147.9 HP	235 HP	323 HP	457.7 HP	
ENGINE SPEED	1800 rpm									
GOVERNOR TYPE	Electronic									
INTEGRAL FUEL TANK CAPACITY	26.4 gal	51.5 gal	84.5 gal	80.5 gal	111 gal	168 gal	204 gal	285 gal	491 gal	
SPILL CONTAINMENT	110%									
DEF TANK CAPACITY	N/A	N/A	N/A	N/A	7.4 gal	7.4 gal	11.7 gal	11.7 gal	25 gal	
LUBRICATING OIL CAPACITY	1.72 gal	2.75 gal	2.6 gal	3.1 gal	4.1 gal	6.1 gal	8.7 gal	8.7 gal	15.8 gal	
COOLANT CAPACITY	1.72 gal	2.75 gal	2.5 gal	2.5 gal	3.4 gal	6.7 gal	7.1 gal	8.1 gal	19.8 gal	
BATTERY	12V x 1, 12V System									
FUEL CONSUMPTION										
FULL LOAD	1.0 gal/hr	1.6 gal/hr	2.3 gal/hr	2.8 gal/hr	3.9 gal/hr	7.2 gal/hr	8.5 gal/hr	12.1 gal/hr	23.1 gal/hr	
75% LOAD	0.77 gal/hr	1.3 gal/hr	1.7 gal/hr	2.1 gal/hr	3.1 gal/hr	5.4 gal/hr	6.9 gal/hr	9.5 gal/hr	17.4 gal/hr	
50% LOAD	0.65 gal/hr	1.0 gal/hr	1.2 gal/hr	1.5 gal/hr	2.3 gal/hr	3.9 gal/hr	5.1 gal/hr	6.8 gal/hr	12.1 gal/hr	
RUNTIME @ FULL LOAD	27.7 hours	32 hours	37 hours	28.75 hours	28.5 hours	23.3 hours	24.0 hours	23.55 hours	21.3 hours	
WEIGHTS & DIMENSIONS										
L x W x H WITHOUT TRAILER	55" x 26" x 46"	67" x 31" x 55"	74.8" x 38.2" x 61.4"	74.8" x 38.2" x 61.4"	97" x 39" x 67"	113.4" x 51.2" x 72.8"	129.9" x 51.2" x 84.6"	137.8" x 51.2" x 87.4"	177" x 59" x 107.5"	
L x W x H WITH TRAILER	120" x 60" x 60"	119" x 54" x 62"	144" x 70" x 73"	144" x 70" x 73"	160" x 74" x 84.25"	194" x 83.75" x 89"	211" x 83.75" x 100.6"	219" x 83.75" x 103.4"	270" x 92" x 127"	
GVWR	1,995 lb	2,849 lb	4,247 lb	4,519 lb	5,414 lb	8,352 lb	9,838 lb	11,021 lb	19,602 lb	
TRAILER WEIGHT	494 lb	644 lb	1,182 lb	1,182 lb	1,225 lb	1,650 lb	1,350 lb	1,365 lb	2,650 lb	
DRY / OPERATING WEIGHT (GEN. ONLY)	1,290 lb / 1,500 lb	1,808 lb / 2,205 lb	2,426 lb / 3,065 lb	2,954 lb / 3,337 lb	3,307 lb / 4,189 lb	5,379 lb / 6,702 lb	6,878 lb / 8,488 lb	7,452 lb / 9,656 lb	13,206 lb / 17,042 lb	
SOUND LEVEL @ 23 FT (NO/FULL LOAD)	58 / 61 dBA	57 / 63 dBA	57 / 61 dBA	57 / 61 dBA	59 / 65 dBA	66 / 67 dBA	61 / 67 dBA	63 / 69 dBA	67 / 70 dBA	

All specifications are subject to change without prior notice. Visit anacorp.com for the most current information.