

# Carlton

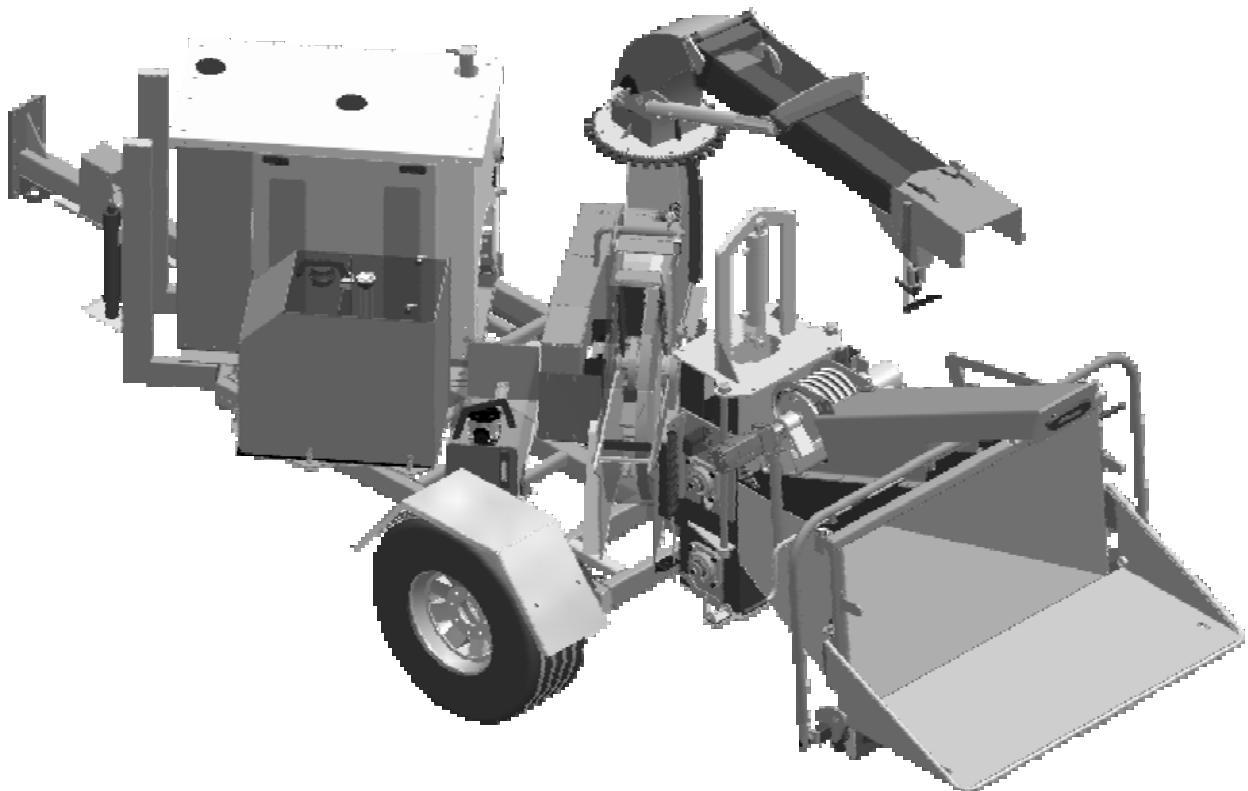
**PROFESSIONAL  
TREE EQUIPMENT**

The logo consists of a stylized bull's head in profile, facing right, with its mouth open. Behind the head is a large, dark 'X' shape. The top of the 'X' is filled with various mechanical components, including gears, bolts, and nuts, suggesting a focus on heavy machinery.

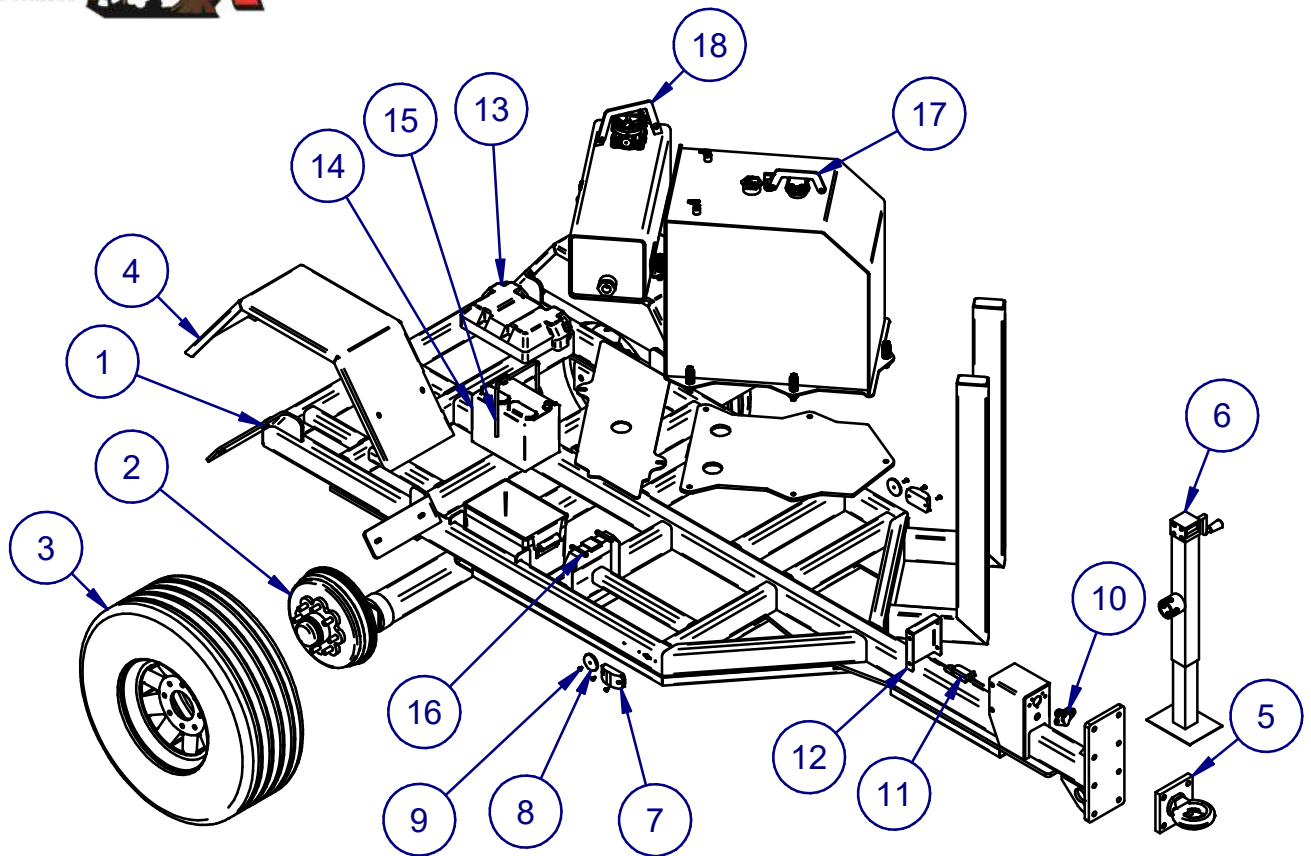
Carlton

J.P. Carlton Company  
Div. D.A.F. Inc.  
121 John Dodd Road  
Spartanburg, SC 29303  
Ph. (864) 578-9335  
Fax (864) 578-0210  
[www.stumpcutters.com](http://www.stumpcutters.com)

## 1712 DISC CHIPPER

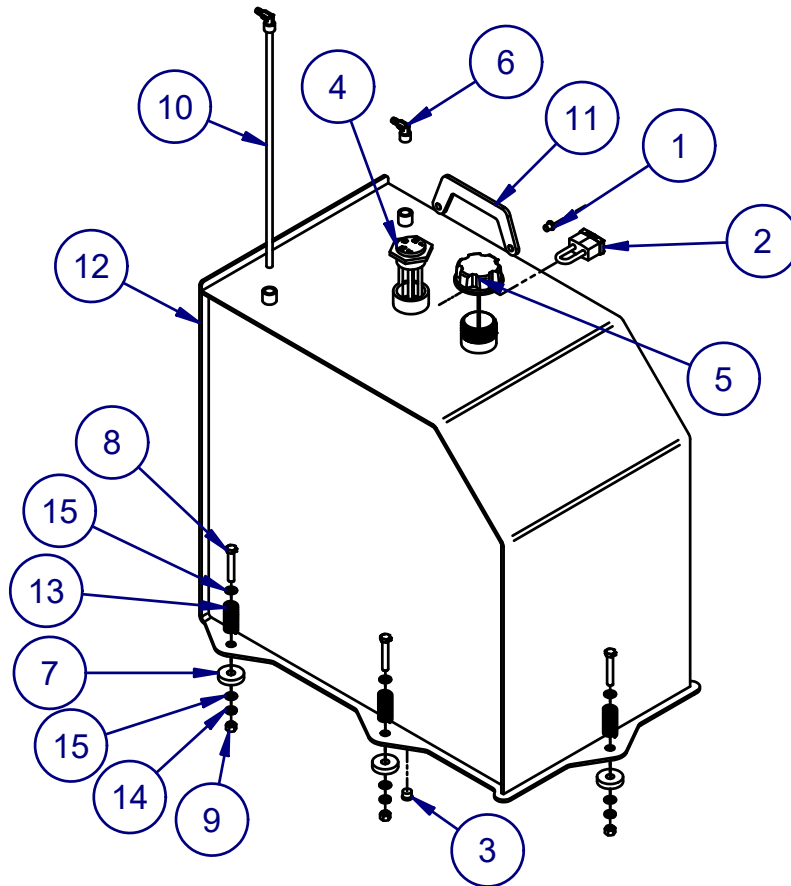


BLANK SHEET



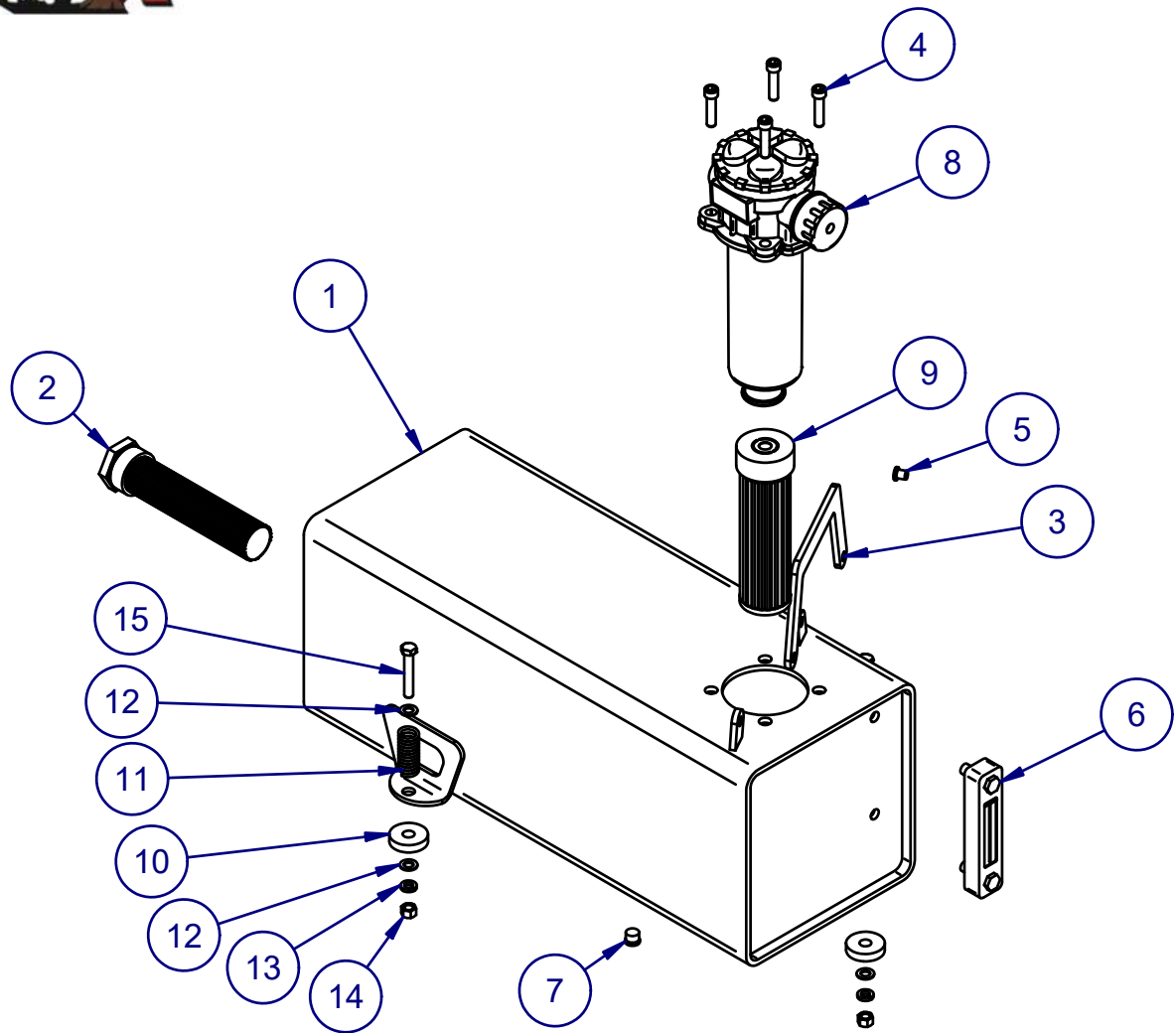
ITEM	PART	DESCRIPTION	QTY
1	21110001-9	WELDMENT,FRAME	1
2	0550250H	#12 TORFLEX AXLE	1
3	0550015A	235/80R16	2
4	21110034-2	WELDMENT,ALUMINUM FENDER	2
5	0550001B	PINTLE, 2 1/2" W/4 HOLE BRKT	1
6	0550005	TRAILER JACK- 12" CHIPPER	1
7	0350054	Marker Light- 4" Amber Oval	2
8	0350057	REFLECTOR- AMBER 2 3/8"	2
9	0150414	RIVET-ALUMINUM W STEEL MANDREL	6
10	0350001C	6-WAY SOCKET ASSEMBLY	1
11	0550050F	TEKONSHA BREAKAWAY SWITCH	1
12	21110030-1	PLATE,SIDE,BACK,PLUG BOX,TAIL LIGHT	1
13	0350032D	BATTERY BOX	1
14	0350032A	BATTERY - 78DT72 850CCA	1
15	0150508	BATTERY BRACKET - 3/8x7x8.25	1
16	0350032E	BATTERY BOX STRAP KIT	1
17	21510006-4	ASSY,FUEL TANK,40 GALLON	1
18	21110005-5	ASSEMBLY,HYDRAULIC TANK	1

**NOTE:** DUE TO CONTINUOUS DESIGN IMPROVEMENTS CONSULT FACTORY PRIOR TO ORDERING 1-800-243-9335.



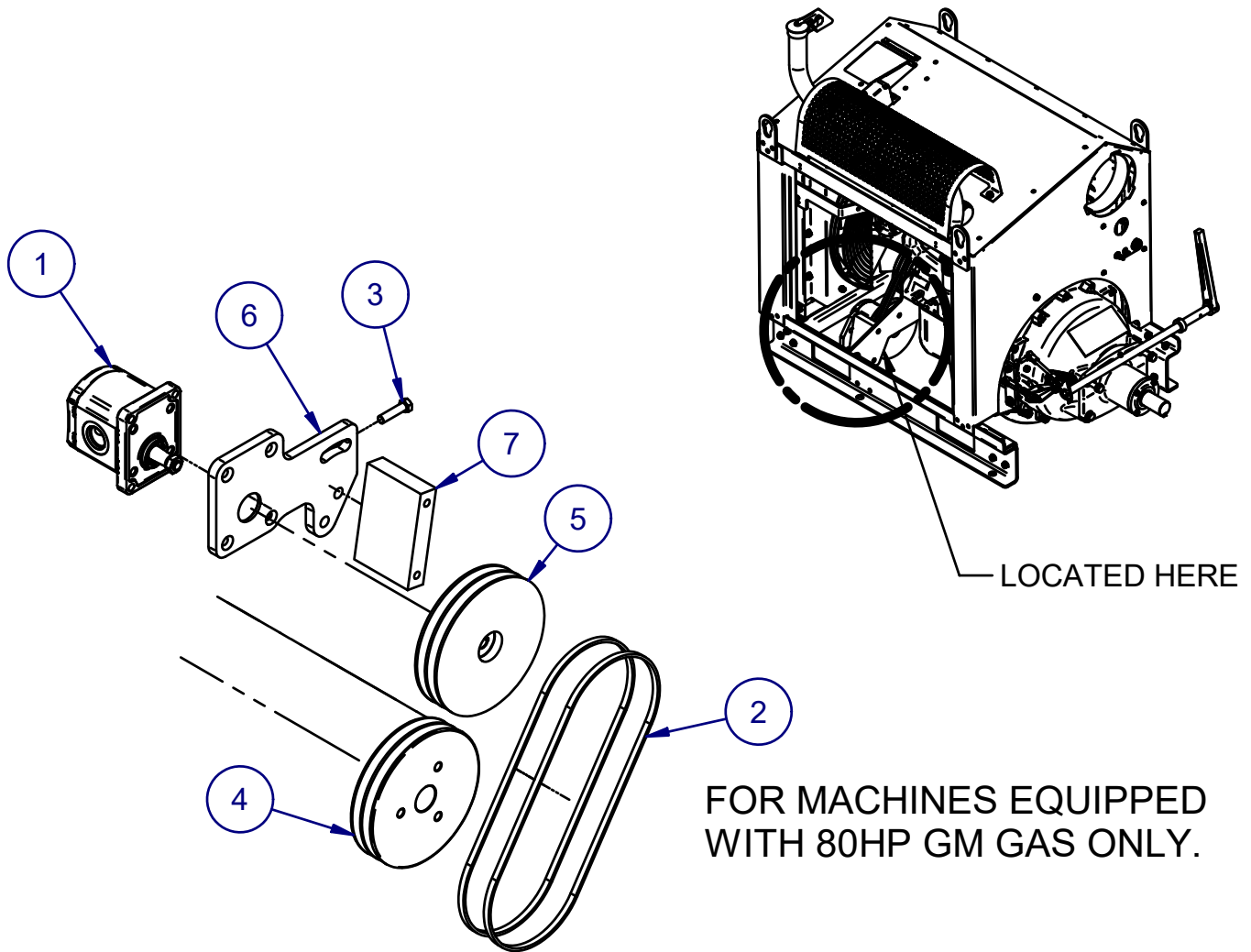
PART	ITEM	DESCRIPTION	QTY
1	.375 machined pin	PIN,CLEVIS, 3/8"X3/4"	1
2	0150608	MASTER LOCK	1
3	0150638	SAE MAGNETIC PLUG,7/16-20	1
4	0200210C	GAUGE,SPIRAL FUEL,24"	1
5	0201001A	FUEL CAP, DIESEL, VENTED, GREEN	1
6	0300253	3/8MP-5/16BARB - 4290-5-6	1
7	0400236	ISOLATOR,TANKS	5
8	12A-0618	HEX C/S 3/8-16 x 2-1/4 UNC GR 8	5
9	20A-06	NUT,HEX,3/8-16 UNC GR8	5
10	21210088-1	WELDMENT,PICK-UP TUBE	1
11	21210156-2	BRACKET,VANDADLISM,FUEL TANK	1
12	21510071-4	WELDMENT,FUEL TANK,40 GALLON	1
13	21840064-1	SPRING,FEED CONTROL LINKAGE	5
14	30A-06	LOCKWASHER, 3/8" USS GR8	5
15	31A-06	FLAT WASHER, 3/8 USS GRD NARROW 5	10

**NOTE:** DUE TO CONTINUOUS DESIGN IMPROVEMENTS CONSULT FACTORY PRIOR TO ORDERING 1-800-243-9335.



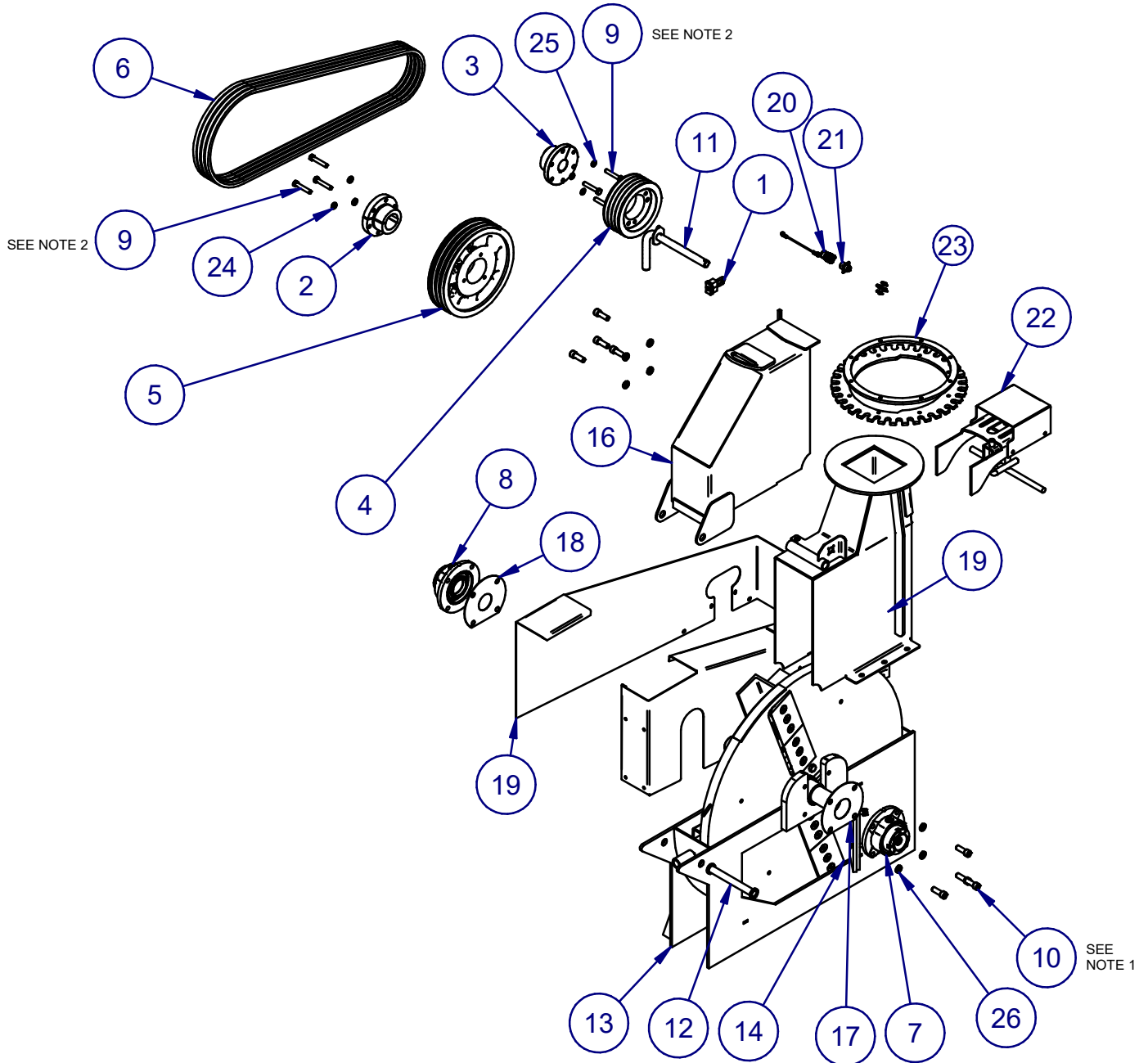
ITEM	PART	DESCRIPTION	QTY
1	21110006-5	WELDMENT, HYDRAULIC TANK	1
2	0300169	STRAINER- TANK MOUNTED LTM-15	1
3	21210154-2	BRACKET, VANDADLISM, HYDRUALIC TANK	1
4	I3D-0612	SHCS 3/8-24 X 1-1/2 NC GR 8	4
5	.375 machined pin	PIN, CLEVIS, 3/8" X 3/4"	1
6	0300266A	HYDRAULIC SITE GAUGE W/TEMP	1
7	0150638	SAE MAGNETIC PLUG, 7/16-20	1
8	0300135I	Hydraulic InTank Filter MP	1
9	0300135J	HYDRALIC IN TANK FILTER ELEMENT	1
10	0400236	ISOLATOR, TANKS	2
11	21840064-1	SPRING, FEED CONTROL LINKAGE	2
12	31A-06	FLAT WASHER, 3/8 USS GRD NARROW 5	4
13	30A-06	LOCKWASHER, 3/8" USS GR8	2
14	20A-06	NUT, HEX, 3/8-16 UNC GR8	2
15	I2A-0618	HEX C/S 3/8-16 x 2-1/4 UNC GR 8	2

**NOTE:** DUE TO CONTINUOUS DESIGN IMPROVEMENTS CONSULT FACTORY PRIOR TO ORDERING 1-800-243-9335.



PART	ITEM	DESCRIPTION	QTY
1	0300142FIC	PUMP,CASAPPA,PLP 20-14 SINGLE PUMP	1
2	0400160	V-BELT,4L370	2
3	12A-0612ZI	HEX C/S 3/8-16 x 1-1/2" UNC GR 8 ZINC	1
4	21I20043-I	GM PULLEY,FLYWHEEL TO HYD. PUMP,80 & 133HP	1
5	21I20044-I	PULLEY,HYD. PUMP,GM	1
6	21I20045-I	PLATE,PUMP MOUNT,GM	1
7	21I20046-I	BLOCK,SPACER,PUMP MT,GM 80HP	1

**NOTE:** DUE TO CONTINUOUS DESIGN IMPROVEMENTS CONSULT FACTORY PRIOR TO ORDERING 1-800-243-9335.

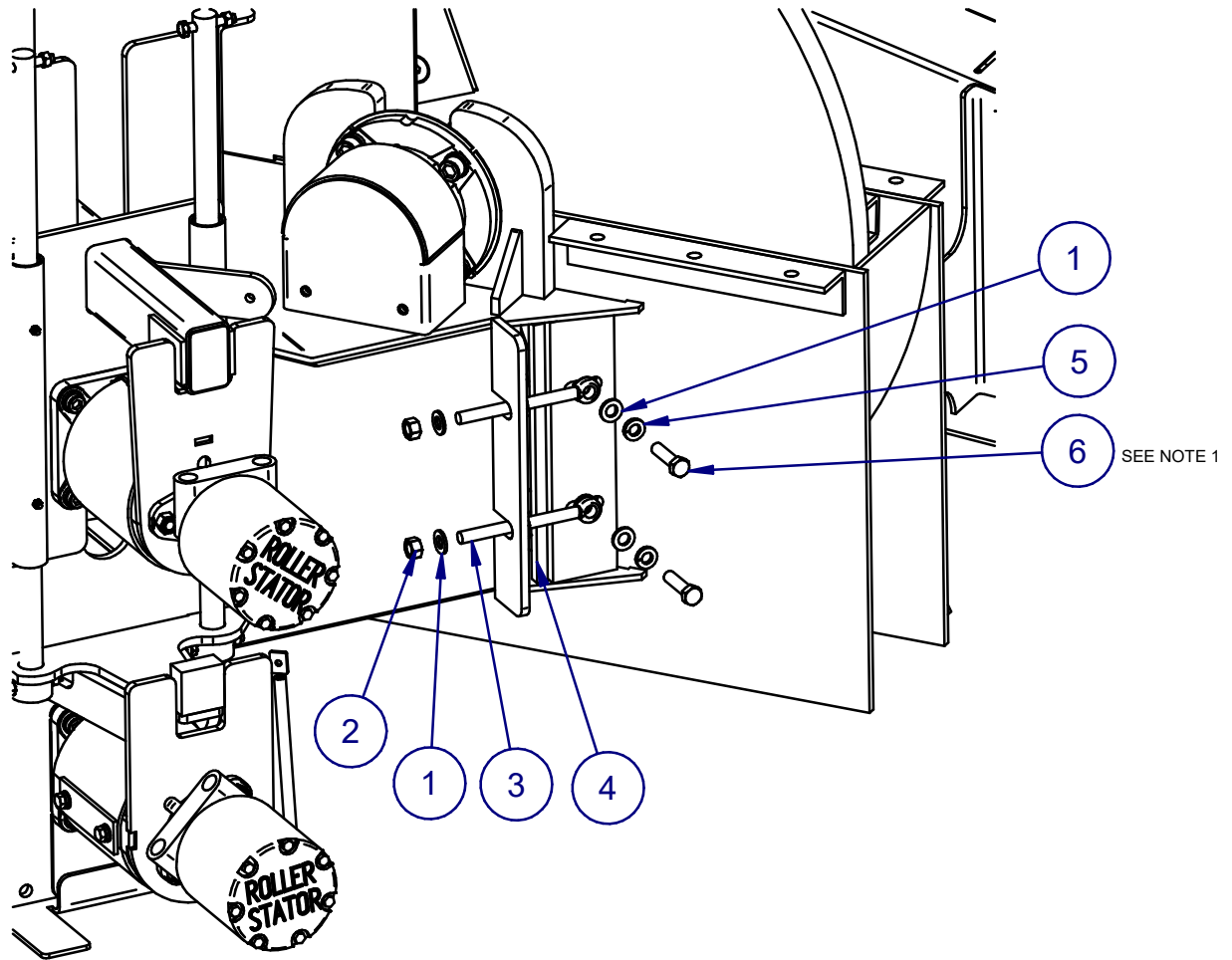


**NOTES:**

1. APPLY GREEN LOCTITE 608 ON BEARING BOLTS (TORQUE 190 FT/LBS & COLLAR SET SCREWS (TORQUE 54 FT/LBS).

2. APPLY BLUE LOCTITE 242 (TORQUE 60 FT/LBS).

**NOTE:** DUE TO CONTINUOUS DESIGN IMPROVEMENTS CONSULT FACTORY PRIOR TO ORDERING 1-800-243-9335.



NOTES:  
1. TORQUE 95 FT/LBS.

ITEM	PART	DESCRIPTION	QTY
1	31A-08ZI	FLAT WASHER 1/2 USS GR 8 NARROW Z&Y	6
2	20A-08	NUT,HEX,1/2-13 UNC GR8	4
3	0150630B	1/2-13 x 6" ROD END	2
4	21130055-2	ANVIL,1712 CHIPPER	1
5	30A-08	LOCKWASHER 1/2"	2
6	12A-0816ZI	BOLT,HEX C/S 1/2-13 x 2 UNC GR8 Z&Y	2

**NOTE:** DUE TO CONTINUOUS DESIGN IMPROVEMENTS CONSULT FACTORY PRIOR TO ORDERING 1-800-243-9335.





# BASE/CUTTER WHEEL ASSEMBLY

ITEM	PART	DESCRIPTION	QTY
1	0150608	MASTER LOCK	1
2	0250183A	Bushing- E 2 7/16"	1
3	0250183G	BUSHING- E 1 3/4"	1
4	0250332	Sheave 4/5V8,5	1
5	0250333	SHEAVE- 4/5V14,0	1
6	0400145	BELT 2012/2512 5V1000K	4
7	0500165	BEARING,CUTTER WHEEL,FEED SIDE	1
8	0500166	BEARING,CUTTER WHEEL,ENGINE SIDE	1
9	12A-0822Z1	HEX C/S 1/2-13 x 2 3/4 UNC GR 5	6
10	12D-1016	SOC HD C/S 5/8-11 X 2" UNC BLCK	8
11	20930014	WELDMNT,LOCK PIN,DOOR	1
12	20930058	WELDMNT,BASE/DOOR ROD	1
13	21130002	WELDMNT,BASE	1
14	21130003	ASSY,CUTTER WHEEL	1
15	21130005	WELDMNT,TRANSITION	1
16	21130008	WELDMNT,DOOR	1
17	21130056	SHIM,DISC BEARING,FEED SIDE	1
18	21130057	SHIM,DISC BEARING,ENGINE SIDE	1
19	21130100	ASSY,BELT GUARD,SQUARED ENDS	1
20	2120089	ASSY,SAF,DISC HOOD,FEMALE	1
21	21220088	ASSY,SAF,DISC HOOD,MALE	1
22	21230211	ASSY,DISCHARGE ADJUST	1
23	21260043	WELDMNT,DISCHARGE ADJUST SPROCKET	1
24	30A-08	LOCKWASHER 1/2"	5
25	30A-08Z1	LOCK WASHER,1/2" USS GR8 Z&Y	3
26	30A-10Z1	LOCKWASHER 5/8" USS GR8 ZINC	8

**NOTE:**

**GAS OPTION:**

MOTOR PULLEY - 0250312  
 MOTOR BUSHING - 0250181A

**DIESEL OPTION:**

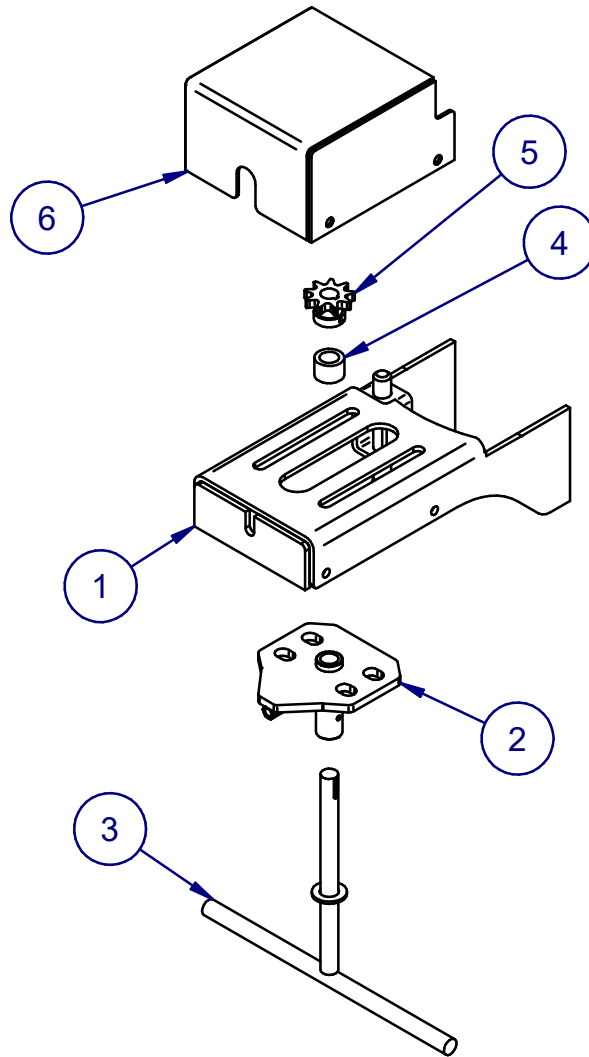
MOTOR PULLEY - 0250332  
 MOTOR BUSHING - 0250183G

DISC PULLEY - 0250341  
 DISC BUSHING - 0250183A

DISC PULLEY - 0250333  
 DISC BUSHING - 0250183A

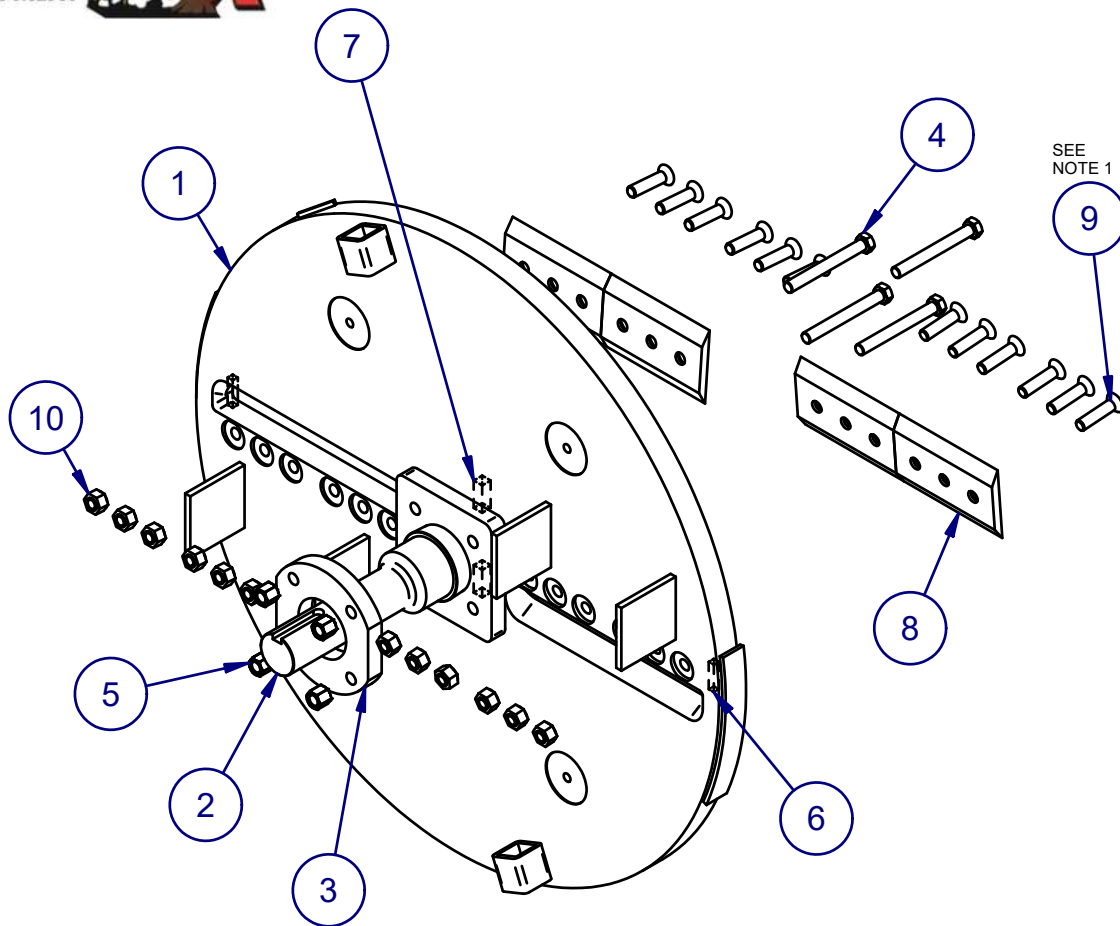
**NOTE:** DUE TO CONTINUOUS DESIGN IMPROVEMENTS CONSULT FACTORY PRIOR TO ORDERING 1-800-243-9335.

# BASE/CUTTER WHEEL ASSEMBLY



ITEM	PART	DESCRIPTION	QTY
1	21230212-1	WELDMENT,DISCHARGE ADJUST	1
2	21830107-1	WELDMENT,MANUAL DISCHARGE ADJUST MOUNT	1
3	21230116-1	WELDMENT,DISCHARGE ADJUST,HANDLE	1
4	21230080-2	BUSHING,DISCHARGE ADJUST	1
5	0250330	SPROCKET, DISCHARGE ADJUST	1
6	21230138-1	WELDMENT,DISCHARGE ADJUST COVER	1

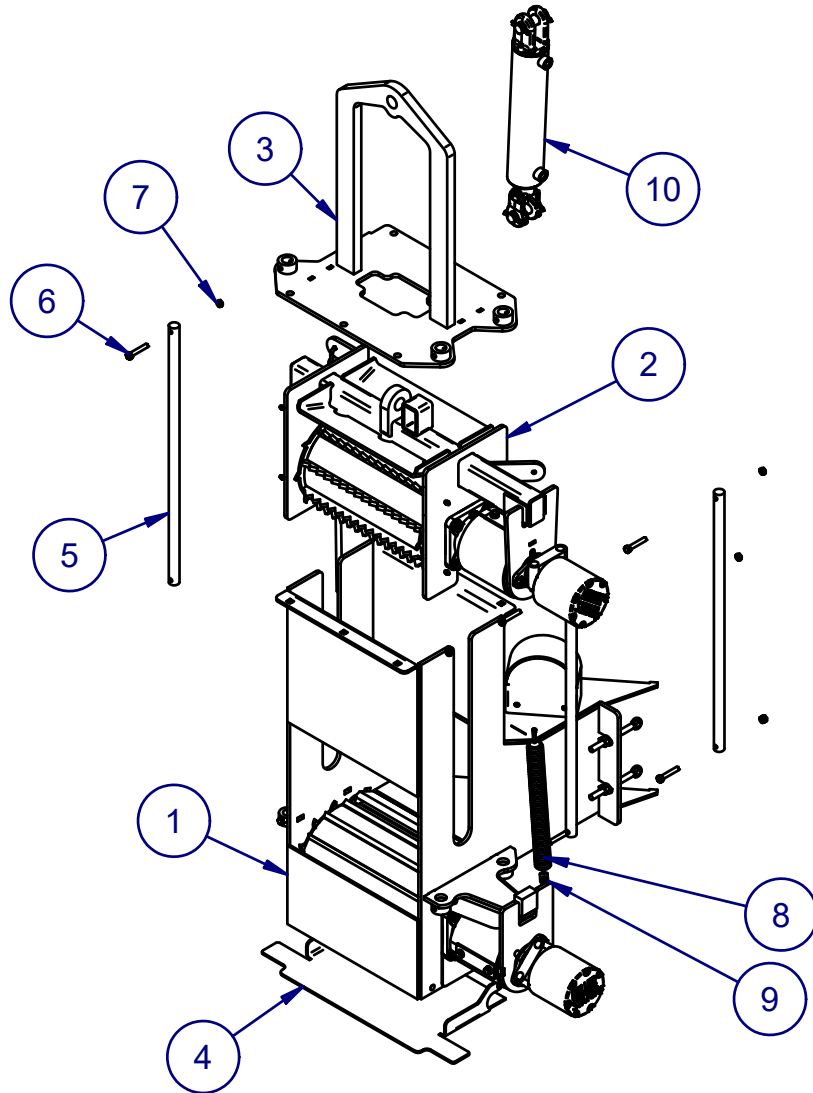
**NOTE:** DUE TO CONTINUOUS DESIGN IMPROVEMENTS CONSULT FACTORY PRIOR TO ORDERING 1-800-243-9335.



ITEM	PART	DESCRIPTION	QTY
1	21130023-2	CUTTER WHEEL,MACHINED STAGE 3	1
2	21130018-1	SHAFT,CUTTER WHEEL	1
3	20930073-1	RETAINER,CUTTER WHEEL,MACHINED	1
4	13A-1044Z1	HEX C/S 5/8-18 x 5 1/2 UNF GR 8 Z & Y	4
5	20M-10Z1	NUT,HEX HIGH NUT,5/8-11 UNC GR 8 Z&Y	4
6	70A-0614	KEY ,3/8 SQ. 1-3/4" LONG	2
7	70A-1014	KEY,5/8 SQ. 1-3/4" LONG	2
8	0900117	7 1/4x4 1/2x1/2 DE KSBC-36	4
9	0900130A	CHIPPER KNIFE BOLT - 5/8"x2.3/4	12
10	0900129	CHIPPER KNIFE BOLT NUT - 5/8"	12

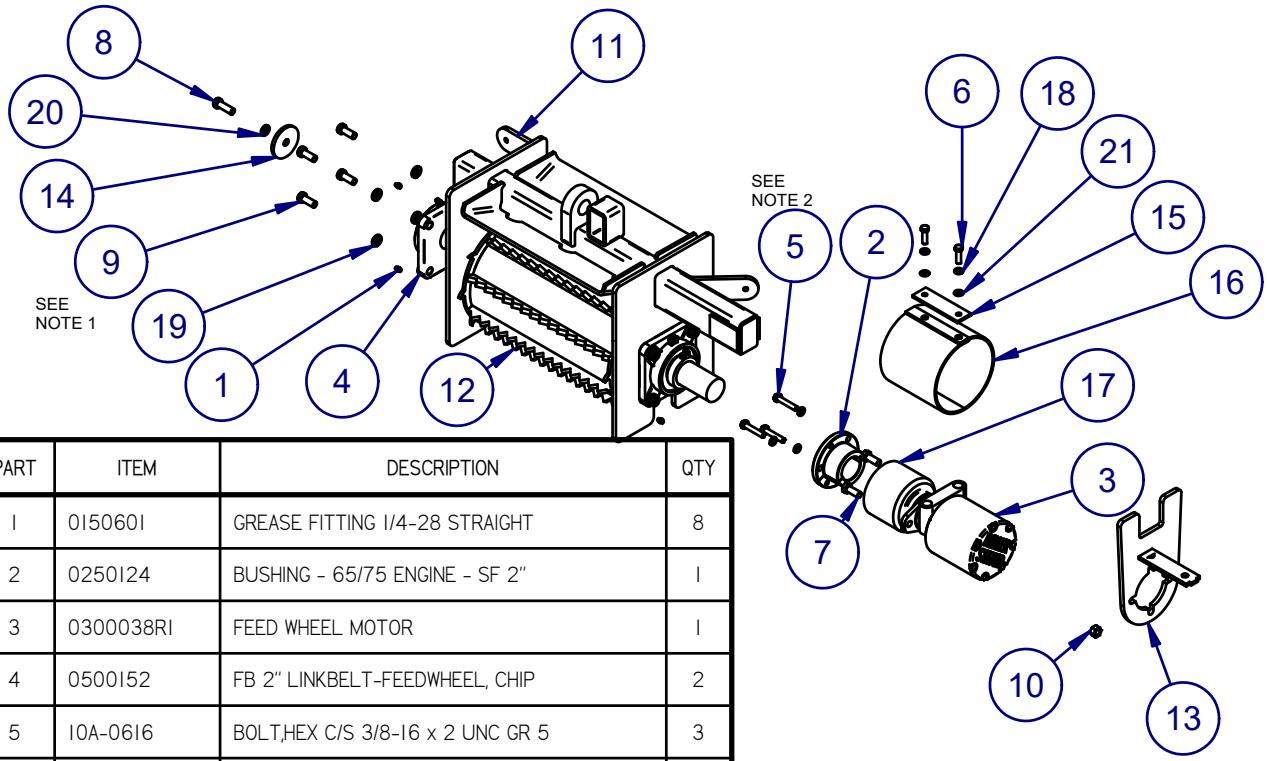
**NOTES:**  
1. TO BE TORQUED 180 FT/LBS

**NOTE:** DUE TO CONTINUOUS DESIGN IMPROVEMENTS CONSULT FACTORY PRIOR TO ORDERING 1-800-243-9335.

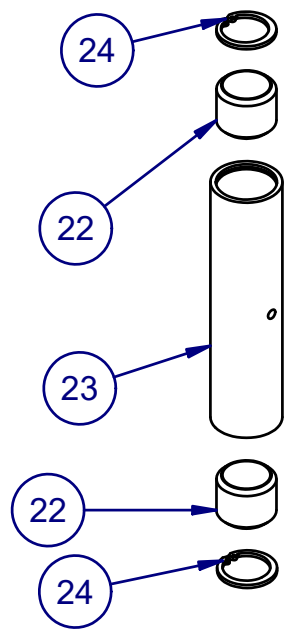


ITEM	PART	DESCRIPTION	QTY
1	21140002-5	ASSY,BTM FEED SYSTEM	1
2	21140003-4	ASSY,TOP FEED SYSTEM	1
3	21140011-6	WELDMENT,FEED TOP	1
4	21140010-2	WELDMENT,TRAP DOOR	1
5	21140022-1	ROD,ENGINE SLIDE	3
6	12A-0618	HEX C/S 3/8-16 x 2-1/4 UNC GR 8	6
7	29A-06	NUT,STOVER LOCK, 3/8-16 UNC GR8	6
8	0900110	SPRING,LIFT	2
9	0900104	SPRING TIGHTENER FOR 250	2
10	0300105F	CYLINDER,3X12	1

**NOTE:** DUE TO CONTINUOUS DESIGN IMPROVEMENTS CONSULT FACTORY PRIOR TO ORDERING 1-800-243-9335.



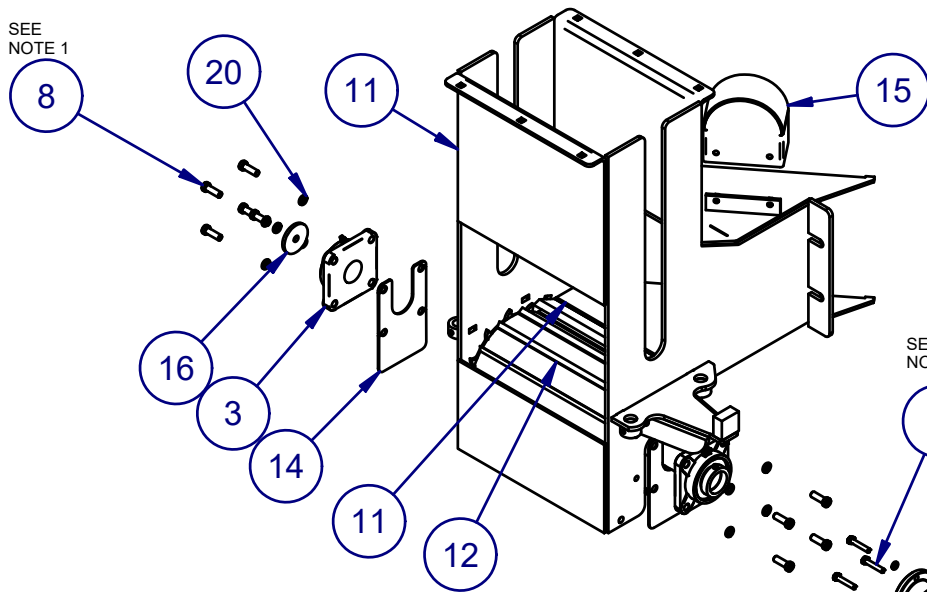
PART	ITEM	DESCRIPTION	QTY
1	0150601	GREASE FITTING 1/4-28 STRAIGHT	8
2	0250124	BUSHING - 65/75 ENGINE - SF 2"	1
3	0300038RI	FEED WHEEL MOTOR	1
4	0500152	FB 2" LINKBELT-FEEDWHEEL, CHIP	2
5	10A-0616	BOLT,HEX C/S 3/8-16 x 2 UNC GR 5	3
6	12A-0610ZI	HEX C/S 3/8-16 x 1-1/4" UNC GR 8 ZINC	2
7	12A-0810ZI	HEX C/S 1/2-13 x 1-1/4 UNC GR 8 ZINC	2
8	12D-0812	SOC HD C/S 1/2-13 X 1-1/2" UNC BLCK	1
9	13D-0810	SOC HD C/S 1/2-20 X 1-1/4" UNF BLCK	8
10	20A-08	NUT,HEX,1/2-13 UNC GR8	2
11	21140005-3	WLDMNT,TOP FEED ENCL.	1
12	21140006-1	WELDMNT,TOP FEED WHEEL	1
13	21140009-2	WELDMNT,TOP FEED WHEEL MOTOR STOP	1
14	21240075-2	WASHER,FEED WHEEL BEARING	1
15	21240090-1	WASHER,FEED WHEEL COUPLER COVER MNT	1
16	21240091-1	COVER,PVC,FEED WHEEL COUPLER	1
17	21240170-1	COUPLER, FEED WHEEL HUB	1
18	30A-06	LOCKWASHER, 3/8" USS GR8	5
19	30A-08	LOCKWASHER 1/2"	8
20	30A-08ZI	LOCK WASHER,1/2" USS GR8 Z&Y	1
21	31A-06	FLAT WASHER, 3/8 USS GRD NARROW 5	2
22	0150801	BUSHING,HARDENED SPRING	2
23	20540025-1	TUBING,FEED SLIDE	1
24	52F-08	SNAP RING,1"	2



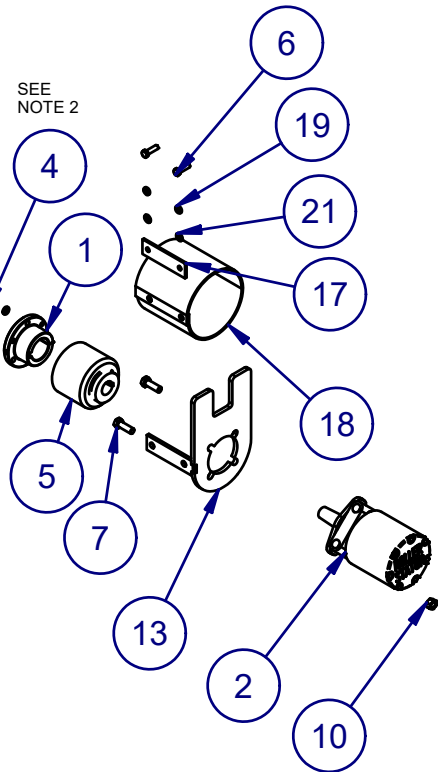
**NOTES:**  
 1. ITEM #10 (12D-0812) BOLTS TO BE TORQUED 95FT/LBS.  
 2. ITEM #5 (10A-0616) BOLTS TO BE TORQUED 30FT/LBS WITH BLUE LOCTITE 242.

**NOTE:** DUE TO CONTINUOUS DESIGN IMPROVEMENTS CONSULT FACTORY PRIOR TO ORDERING 1-800-243-9335.

SEE NOTE 1



SEE NOTE 2

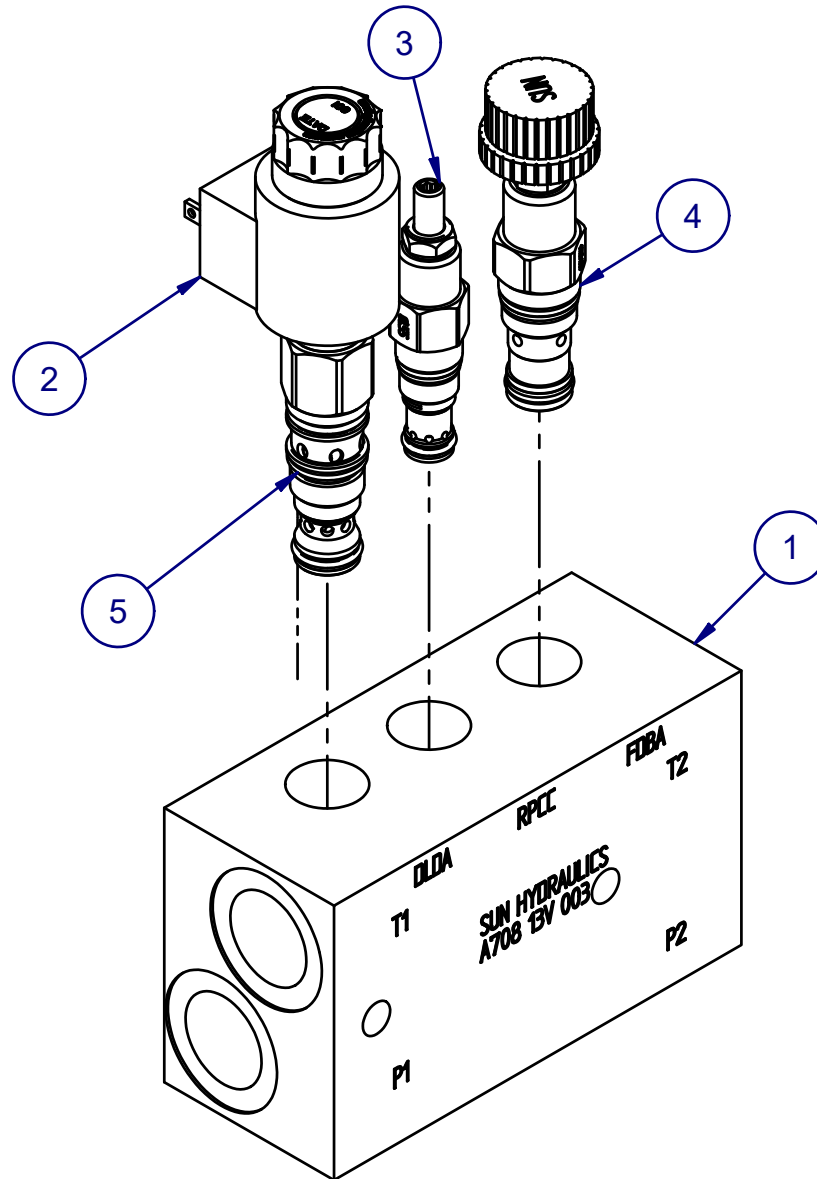


ITEM	PART	DESCRIPTION	QTY
1	0250124	BUSHING - 65/75 ENGINE - SF 2"	1
2	0300039RI	FEED WHEEL MOTOR	1
3	0500152	FB 2" LINKBELT-FEEDWHEEL, CHIP	2
4	10A-0616	BOLT,HEX C/S 3/8-16 x 2 UNC GR 5	3
5	21240170-1	COUPLER, FEED WHEEL HUB	1
6	12A-0610Z1	HEX C/S 3/8-16 x 1-1/4" UNC GR 8 ZINC	2
7	12A-0812Z1	HEX C/S 1/2-13 x 1-1/2 UNC GR 8 Z&Y	2
8	13D-0812	SOC HD C/S 1/2-20 X 1-1/2" UNF BLCK	9
10	20A-08Z1	NUT,HEX,1/2-13 UNC Z&Y GR8	2
11	21140004-5	WELDMNT,BTM FEED	1
12	21140007-1	WELDMNT,FEED WHEEL/BTM	1
13	21140008-4	WELDMNT,BTM FEED WHEEL MOTOR STOP	1
14	21140033-2	SPACER,FEED WHEEL BEARING	2
15	21230052-1	WELDMNT,CUTTER WHEEL BEARING COVER	1
16	21240075-2	WASHER,FEED WHEEL BEARING	1
17	21240090-1	WASHER,FEED WHEEL COUPLER COVER MNT	1
18	21240091-1	COVER,PVC,FEED WHEEL COUPLER	1
19	30A-06	LOCKWASHER, 3/8" USS GR8	5
20	30A-08Z1	LOCK WASHER,1/2" USS GR8 Z&Y	9
21	31A-06	FLAT WASHER, 3/8 USS GRD NARROW 5	2

**NOTES:**

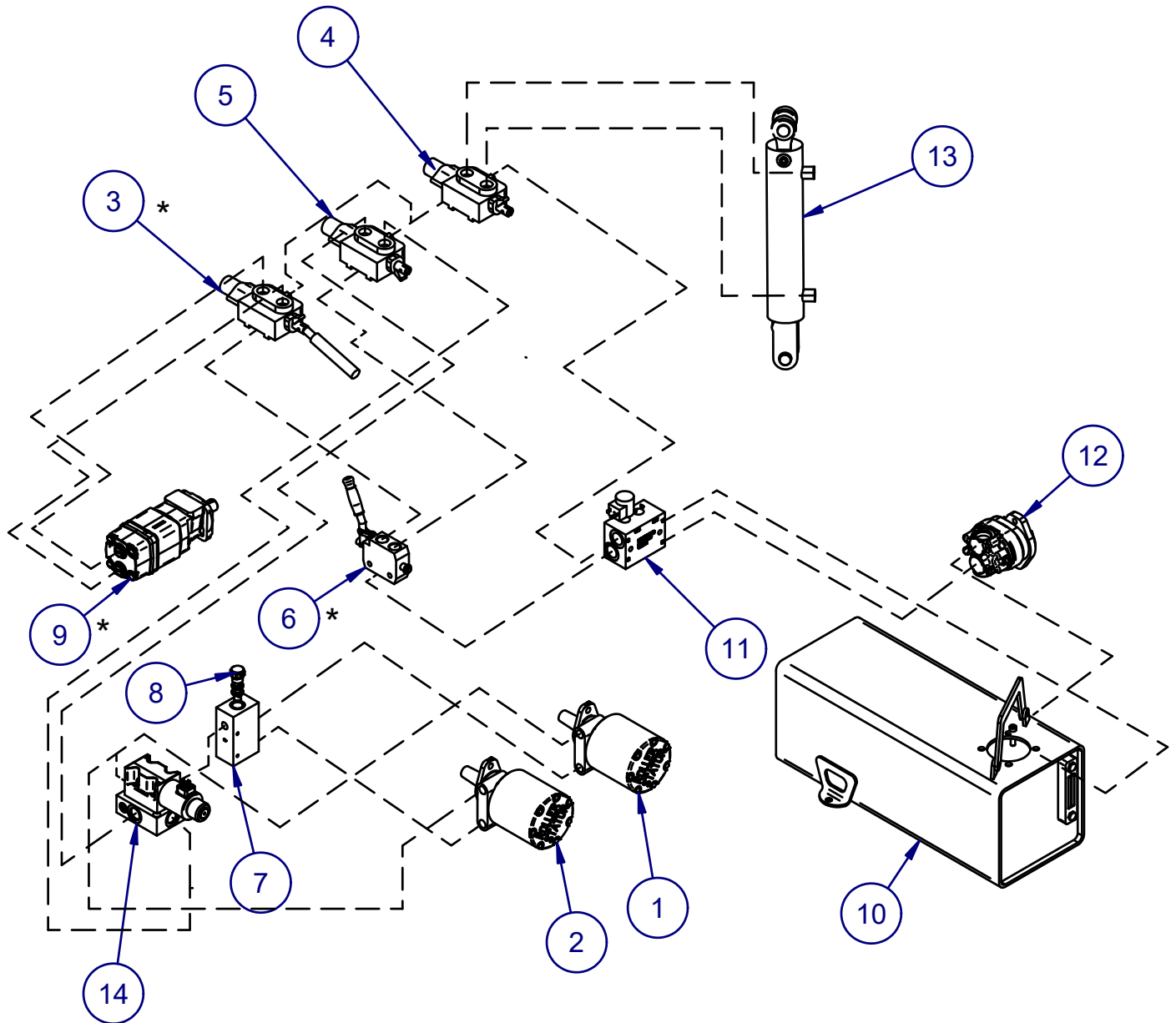
- ITEM #8 (13D-0812) BOLTS TO BE TORQUED 95FT/LBS.
- ITEM #4 (10A-0616) BOLTS TO BE TORQUED 30FT/LBS WITH BLUE LOCTITE 242.

**NOTE:** DUE TO CONTINUOUS DESIGN IMPROVEMENTS CONSULT FACTORY PRIOR TO ORDERING 1-800-243-9335.



ITEM	PART	DESCRIPTION	QTY
1	0300173WITH FLOW	AUTOFEED BODY 6" CHIPPER	1
2	0300121B	SOLENOID STOP VALVE	1
3	0300121D	PISTON RELIEF VALVE- RPCC-LAN	1
4	0300121c	Flow Control Valve- FDDBA-KAN	1
5	0300121B1	Sun Solenoid Coil - 770-212	1

**NOTE:** DUE TO CONTINUOUS DESIGN IMPROVEMENTS CONSULT FACTORY PRIOR TO ORDERING 1-800-243-9335.



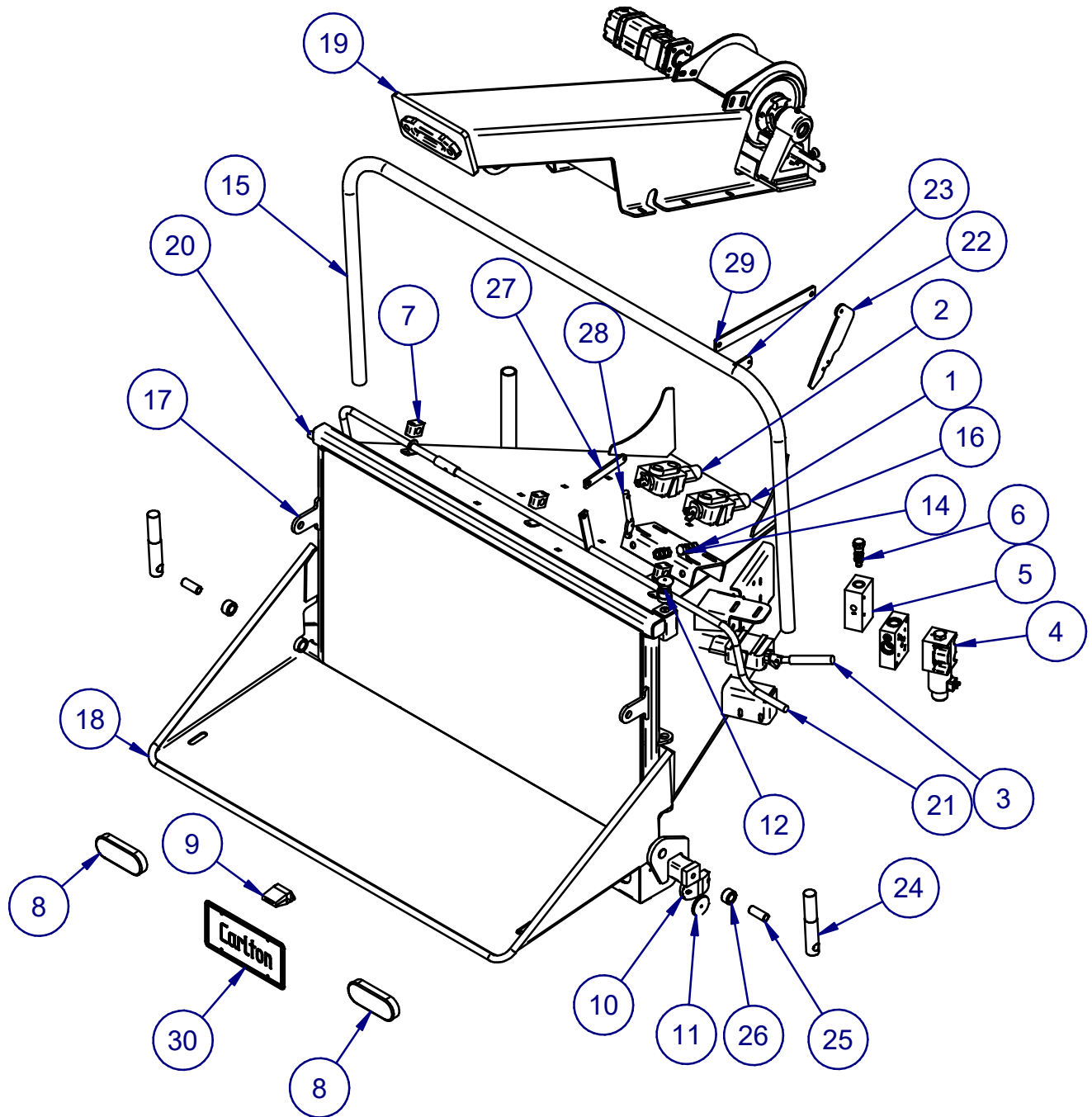
THE \* NOTES AN OPTIONAL ITEM.  
ALL MACHINES ARE NOT EQUIPPED  
WITH WINCHES.

**NOTE:** DUE TO CONTINUOUS DESIGN IMPROVEMENTS CONSULT FACTORY PRIOR TO ORDERING 1-800-243-9335.



ITEM	PART	DESCRIPTION	QTY
1	0300038RI	FEED WHEEL MOTOR	1
2	0300039RI	FEED WHEEL MOTOR	1
3	0300037	ENERGY WINCH VALVE	1
4	0300036	ENERGY LIFT CYLINDER VALVE	1
5	0300035	ENERGY FEED WHEEL VALVE	1
6	0300037I	ENERGY-SELECTOR VALVE	1
7	0300172RI	DIVIDER BODY	1
8	0300172RIA	CARTRIDGE,FLOW CONTROL,HYDRAULIC	1
9	0300040	WINCH MOTOR WHITE	1
10	21110005-5	ASSEMBLY,HYDRAULIC TANK	1
11	0300173	AUTOFEED BLOCK	1
12	0300175	GEAR PUMP,SINGLE	1
13	0300105F	HYDRAULIC CYLINDER - 3X12	1
14	0300125	AUTOREVERSING MANIFOLD ASSY	1

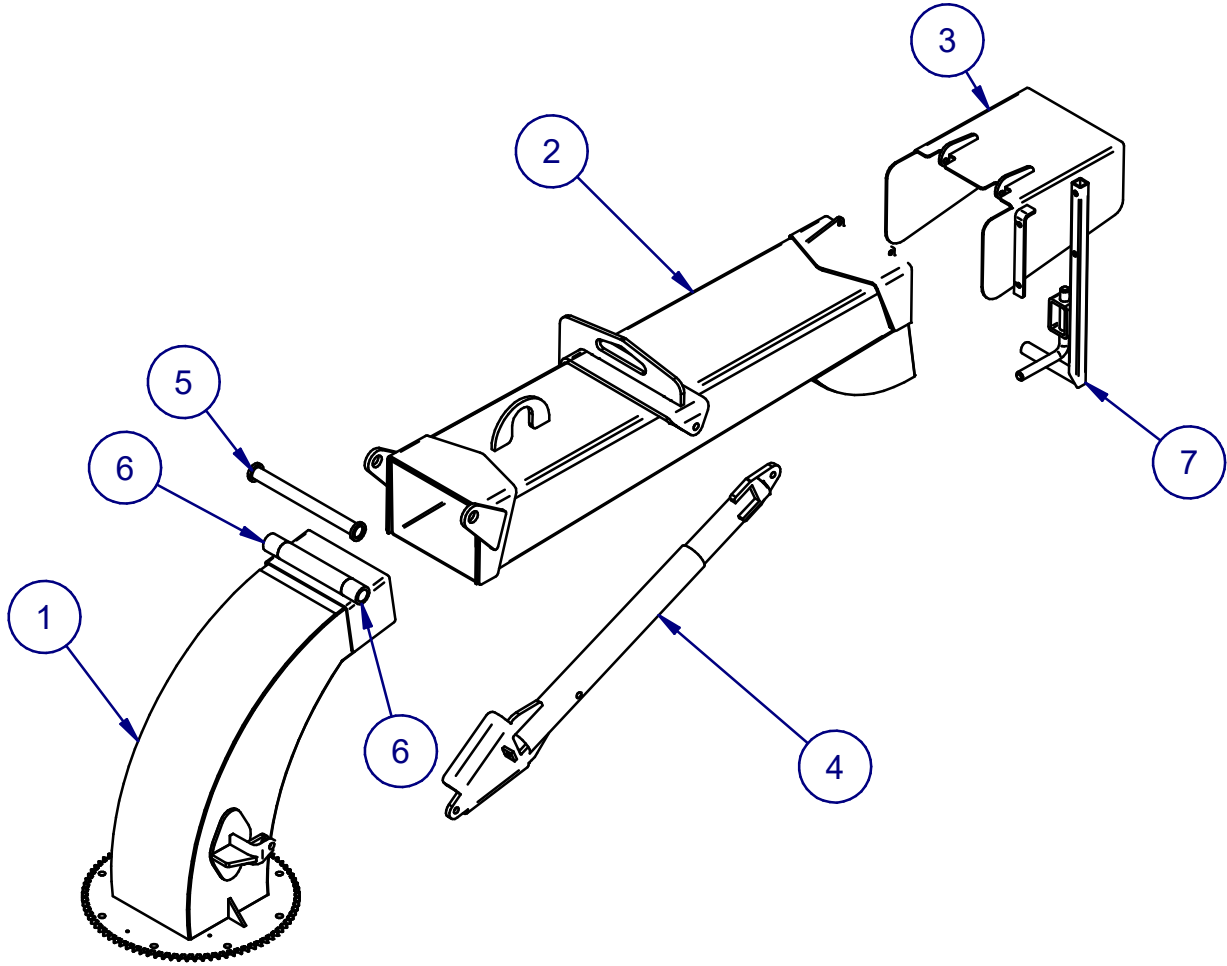
**NOTE:** DUE TO CONTINUOUS DESIGN IMPROVEMENTS CONSULT FACTORY PRIOR TO ORDERING 1-800-243-9335.



**NOTE:** DUE TO CONTINUOUS DESIGN IMPROVEMENTS CONSULT FACTORY PRIOR TO ORDERING 1-800-243-9335.

PART	ITEM	DESCRIPTION	QTY
1	0300035	Energy Feed Wheel Valve	1
2	0300036	Energy Lift Cylinder Valve	1
3	0300037	Energy Winch Valve	1
4	0300125	AutoReversing Manifold Assy	1
5	0300172RI	DIVIDER BODY	1
6	0300172RIA	CARTRIDGE,FLOW CONTROL,HYDRAULIC	1
7	0300300A	HOSE CLAMP	3
8	0350008AI	TAIL LIGHT - 12" CHIPPER	2
9	0350008B	TAG LIGHT	1
10	0350055	Marker Light- 4" Red Oval	2
11	0350056	REFLECTOR - RED 2 3/8"	2
12	0350058A	E-STOP- 1 NO 1 NC- KUBOTA 6"	2
13	10A-1010ZI	BOLT,HEX C/S 5/8-11 x 1 1/4 UNC GR8 Z&Y	1
14	10A-1016ZI	BOLT,HEX C/S 5/8-11 x 2 UNC GR8 Z&Y	1
15	20950036-4	TUBING,CONTROL BAR	1
16	20A-10ZI	NUT,HEX,5/8-11 UNC GR 8 Z&Y	4
17	21150002-7	WELDMENT,INFEED	1
18	21150003-4	WELDMENT,FOLDING END TABLE	1
19	21170001-3	ASSY,WINCH,RKI	1
20	21170005-2	WELDMENT,FEED LIFT CONTROL BAR,RH	1
21	21170006-2	WELDMENT,FEED LIFT CONTROL ARMLH	1
22	21250092-2	BRACKET,CONTROL BAR LINKAGE	1
23	21250093-1	MOUNT,FEED WHEEL CONTROL,LINKAGE	1
24	21250097-1	MOUNT,CONTROL BAR,64"	2
25	21250098-1	BUSHING,CONTROL BAR	2
26	21250099-1	SPACER,CONTROL ARM	2
27	21250148-1	FLATBAR,FEED LIFT CONTROL BAR LINKAGE/VALVE	1
28	21250170-1	HANDLE,VALVE	1
29	21250203-2	FLATBAR,CONTROL LINKAGE	1
30	JP LICENSE PLATE	JP CARLTON LICENSE PLATE	1

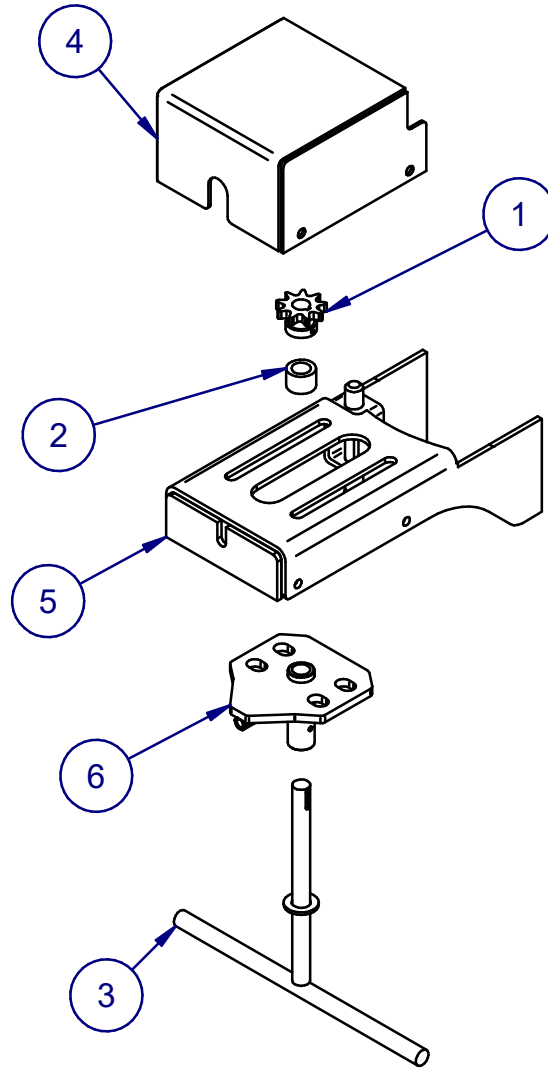
**NOTE:** DUE TO CONTINUOUS DESIGN IMPROVEMENTS CONSULT FACTORY PRIOR TO ORDERING 1-800-243-9335.



PART	ITEM	DESCRIPTION	QTY
1	20960002-2	WELDMENT,DISCHARGE ELBOW	1
2	20960003-2	WELDMENT,DICHARGE NECK	1
3	21260003-2	WELDMENT,DISCHARGE CHIP REFLECTOR	1
4	21260021-2	WELDMENT,REAR JACK	1
5	21260032-2	WELDMENT,DISCHARGE ELBOW/DN ROD	1
6	21260036-2	BUSHING,DISCHARGE	2
7	21260037-3	WELDMENT,DISCHARGE ADJUST HANDLE	1

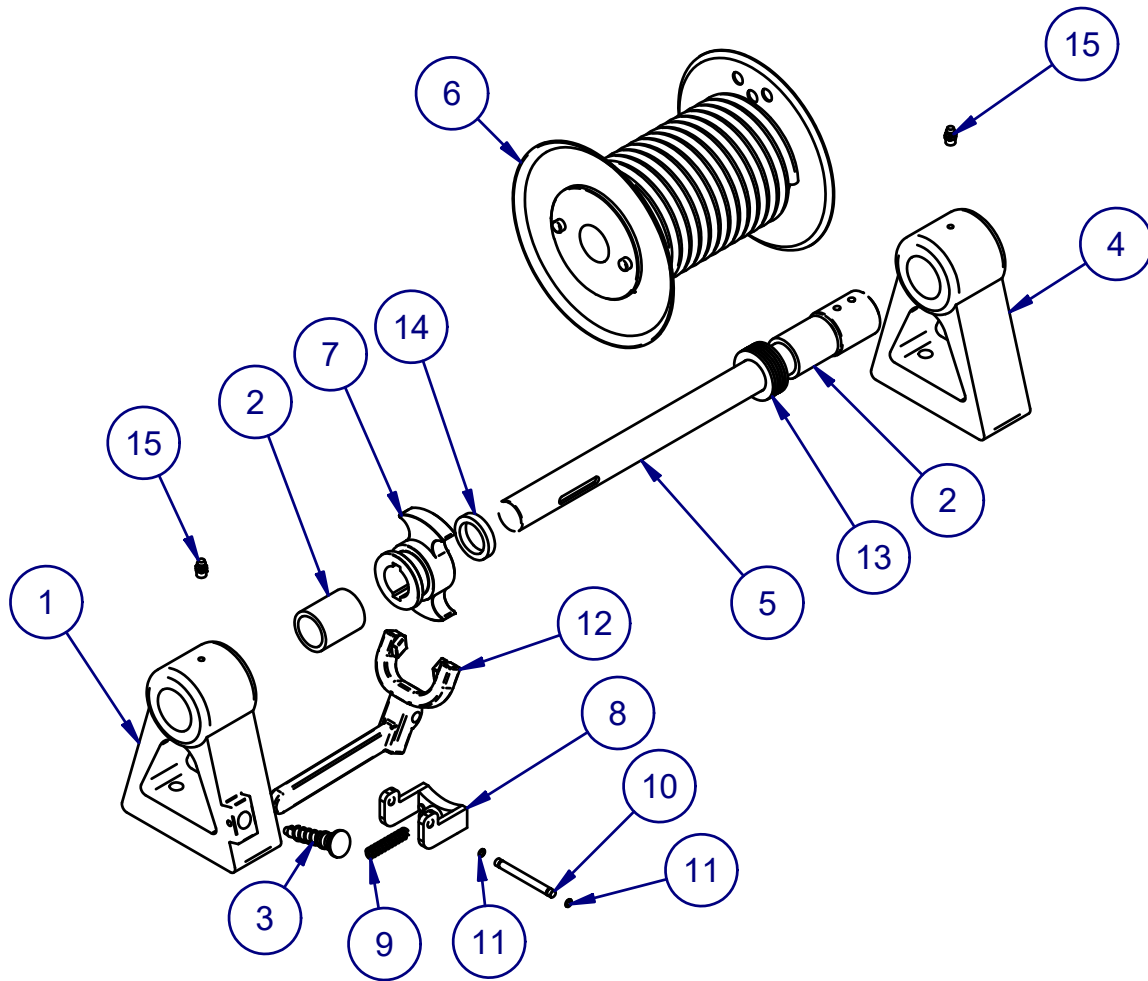
**NOTE:** DUE TO CONTINUOUS DESIGN IMPROVEMENTS CONSULT FACTORY PRIOR TO ORDERING 1-800-243-9335.

# DISCHARGE ADJUST ASSEMBLY



PART	ITEM	DESCRIPTION	QTY
1	0250330	SPROCKET, DISCHARGE ADJUST	1
2	21230080-2	BUSHING,DISCHARGE ADJUST	1
3	21230116-1	WELDMENT,DISCHARGE ADJUST,HANDLE	1
4	21230138-1	WELDMENT,DISCHARGE ADJUST COVER	1
5	21230212-1	WELDMENT,DISCHARGE ADJUST	1
6	21830107-1	WELDMENT,MANUAL DISCHARGE ADJUST MOUNT	1

**NOTE:** DUE TO CONTINUOUS DESIGN IMPROVEMENTS CONSULT FACTORY PRIOR TO ORDERING 1-800-243-9335.



ITEM	PART	DESCRIPTION	QTY
1	0300041B	WINCH DRUM BEARING TOWER, W/BRK	1
2	0300041BI	BUSHING- WINCH BEARING TOWER	2
3	0300041CI	WINCH DRUM- PIN KIT	1
4	0300041A	WINCH DRUM BEARING TOWER	1
5	0300041D2	DRUM SHAFT	1
6	0300041DI	DRUM WITH BUSHING	1
7	0300041F	WINCH DRUM CLUTCH	1
8	0300041D	WINCH DRUM BRAKE	1
9	0300041E	WINCH DRUM BRAKE SPRING	1
10	0300041CIA	WINCH DRUM- BRAKE PIN	1
11	0300041EI	RETAINING RING	2
12	0300041C	WINCH DRUM CLUTCH LEVER	1
13	0300041E2	WASHER, THRUST, WINCH	6
14	0300041D3	SPACER, DRUM SHAFT, WINCH	1
15	0150625	GREASE FITTING, 1/8 NPT STRT.	2

**NOTE:** DUE TO CONTINUOUS DESIGN IMPROVEMENTS CONSULT FACTORY PRIOR TO ORDERING 1-800-243-9335.

**CARLTON**  
PARTS & SERVICE



***CARLTON STANDS FOR QUALITY!!***

Carlton's certified service department, along with its authorized dealer network, can help you keep your stump cutter or wood chipper working at its best. *Your authorized J.P. Carlton dealer knows your local conditions and is ready to deliver fast, professional, and expert service and/or parts, when you need it most.*

Visit our website to find a dealer near you.

[www.stumpcutters.com](http://www.stumpcutters.com)

(800) 243-9335

(864) 578-9335

**ATTENTION:**

Please have the machine Model and Serial Number available when contacting one of our parts and service professionals.

## STUMP CUTTERS

Model	Engine		Length		Width				Height		Weight	
	[hp]	[kw]	[in]	[cm]	Minimum		Maximum		[in]	[cm]	[lbs]	[kg]
					[in]	[cm]	[in]	[cm]				
900H	13	9.69	77	195.58	24	60.96	25	63.50	44	111.76	220	99.79
SP2000	27	20.13	80	203.20	29	73.66	29	73.66	54	137.16	700	317.51
SP5014	35	26.10	103	261.62	35	88.90	35	88.90	57	144.78	1650	748.43
	37	27.59									1650	748.43
SP5014 TRX	35	26.10	103	261.62	35	88.90	35	88.90	56	142.24	2215	1004.71
	37	27.59									2215	1004.71
SP6016	54	40.27	126	320.04	34.5	87.63	34.5	87.63	50	127	3200	1451.50
SP7015	74	55.18	140	355.60	35	88.90	52	132.08	76	193.04	4520	2050.24
SP7015 TRX	74	55.18	130	330.20	35	88.90	48	121.92	77	195.58	5820	2639.91
SP7015 TRX HD	74	55.18	151	383.54	35	88.90	48	121.92	77	195.58	6400	2902.99
SP8018 TRX	116	86.50	166	421.64	60	152.40	60	152.40	83	210.82	8600	3900.89
HURRICANE RS	140	104.40	200	508.00	72	182.88	72	182.88	96	243.84	10100	4581.28
	173	129.01									11380	5161.88
HURRICANE TRX	173	129.01	200	508.00	72	182.88	72	182.88	96	243.84	13520	6132.57
7500	74	55.18	180	457.20	84	213.36	84	213.36	70	177.8	6430	2916.60

## WOOD CHIPPERS

Model	Engine		Length		Width				Height		Weight	
	[hp]	[kw]	[in]	[cm]	Minimum		Maximum		[in]	[cm]	[lbs]	[kg]
					[in]	[cm]	[in]	[cm]				
660	27	20.13	124	314.96	56	142.24	56	142.24	87	220.98	1740	789.25
1260	35	26.10	132	335.28	68.5	173.99	68.5	173.99	89	226.06	2620	1188.41
	37	27.59									2620	1188.41
1290	35	26.10	136	345.44	68.5	173.99	68.5	173.99	89	226.06	2930	1329.03
	37	27.59									2930	1329.03
	54	40.27									3700	1678.29
1712	74	55.18	198	502.92	70	177.80	70	177.80	101	256.54	6500	2948.35
	80	59.66									5800	2630.84
	135	100.67									6920	3138.86
2012	116	86.50	196	497.84	80	203.20	80	203.20	104	264.16	7760	3519.88
	135	100.67									7000	3519.88
	140	104.40									7760	3519.88
2018	173	129.01	240	609.60	88	223.52	88	223.52	108	274.32	12400	5624.55
1712 APACHE	74	55.18	198	502.92	70	177.80	70	177.80	101	256.54	6920	3138.86
	135	100.67									6820	3093.50
2015 APACHE	116	86.50	244	619.76	90.5	229.87	90.5	229.87	108	274.32	9050	4105.01
	140	104.40									9900	4490.56
											8800	3991.61
2518 APACHE	140	104.40	245	622.30	90	228.60	90	228.60	114	289.56	11300	5125.59
	173	129.01									11300	5125.59
											10300	4672.00

MULTIPLE COLOR OPTIONS AVAILABLE