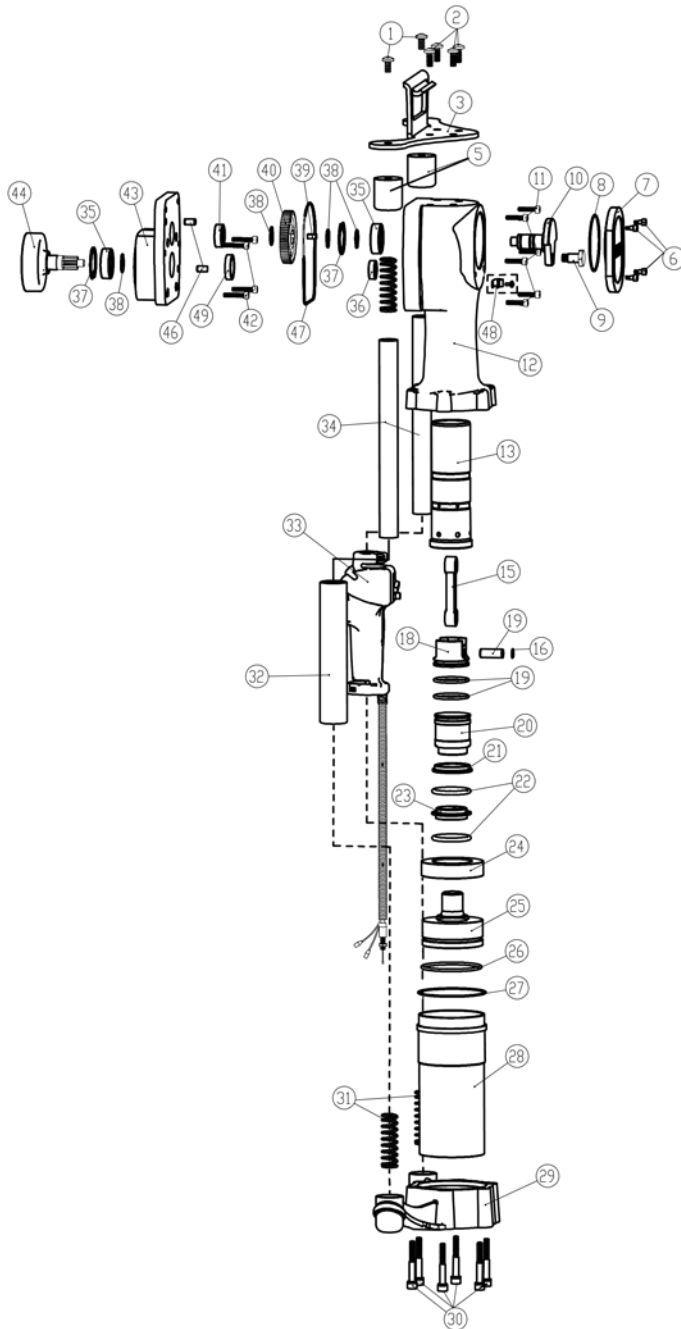


PGD3200 Parts Diagram

Part NO	Part Name	QTY
MPD-1	M8*15 BOLTS	2
MPD-2	M8*20 TOP HANDLE BOLTS	4
MPD-3	UPPER HANDLE	1
MPD-5	HANDLE CUP	2
MPD-6	M5*20 HEXAGONAL BOLTS	4
MPD-7	COVER FOR CRANKCASE	1
MPD-8	O RING 76*2.65	1
MPD-9	CRANK PIN	1
MPD-10	CRANK SHAFT	1
MPD-11	M6*30 HEXAGONAL BOLTS	6
MPD-12	POST DRIVER BODY	1
MPD-13	CYLINDER	1
MPD-15	CONNECTING ROD	1
MPD-16	12 RETAINER	1
MPD-17	WRIST PIN 12*32	1
MPD-18	PISTON	1
MPD-19	O RING 42.5*3.8	2
MPD-20	HAMMER	1
MPD-21	DAMPER WASHER	1
MPD-22	O RING 44*5.3	2
MPD-23	DAMPER GUIDE RING	1
MPD-24	DAMPER CUP	1
MPD-25	ANVIL	1
MPD-26	O RING 78*3.8	1
MPD-27	O RING 92*2.65	1
MPD-28	CHUCK TUBE	1
MPD-29	LOWER DRIVER BODY	1
MPD-30	M8*60 HEXAGONAL BOLTS	6
MPD-31	HANDLE ANTI-VIBRATION SPRING	4
MPD-32	HANDLE CUSHION	1
MPD-33	SWITCH	1
MPD-34	HANDLE TUBE	2
MPD-35	6004-2RS BEARING	2
MPD-36	6000-2RS BEARING	1
MPD-37	42 RETAINER	2
MPD-38	20 RETAINER	4
MPD-39	KEY 6*6*12	1



MPD-40	GEAR	1
MPD-41	6201-2RS BEARING	1
MPD-42	HEXAGONAL BOLTS M6*30	4
MPD-43	CLUTCH HOUSING	1
MPD-44	CLUTCH DRUM	1
MPD-46	ALIGNMENT PIN	2
MPD-47	GASKET	1
MPD-48	CLAMP W/SCREW	1
MPD-49	OIL SEAL	1



Contact:

Hours: Monday-Friday 8 AM to 5 PM CST

Address: 713 E Austin Blvd, Nevada, MO 64772

Phone: (702) 293-4262

Email: info@titanpostdrivers.com